

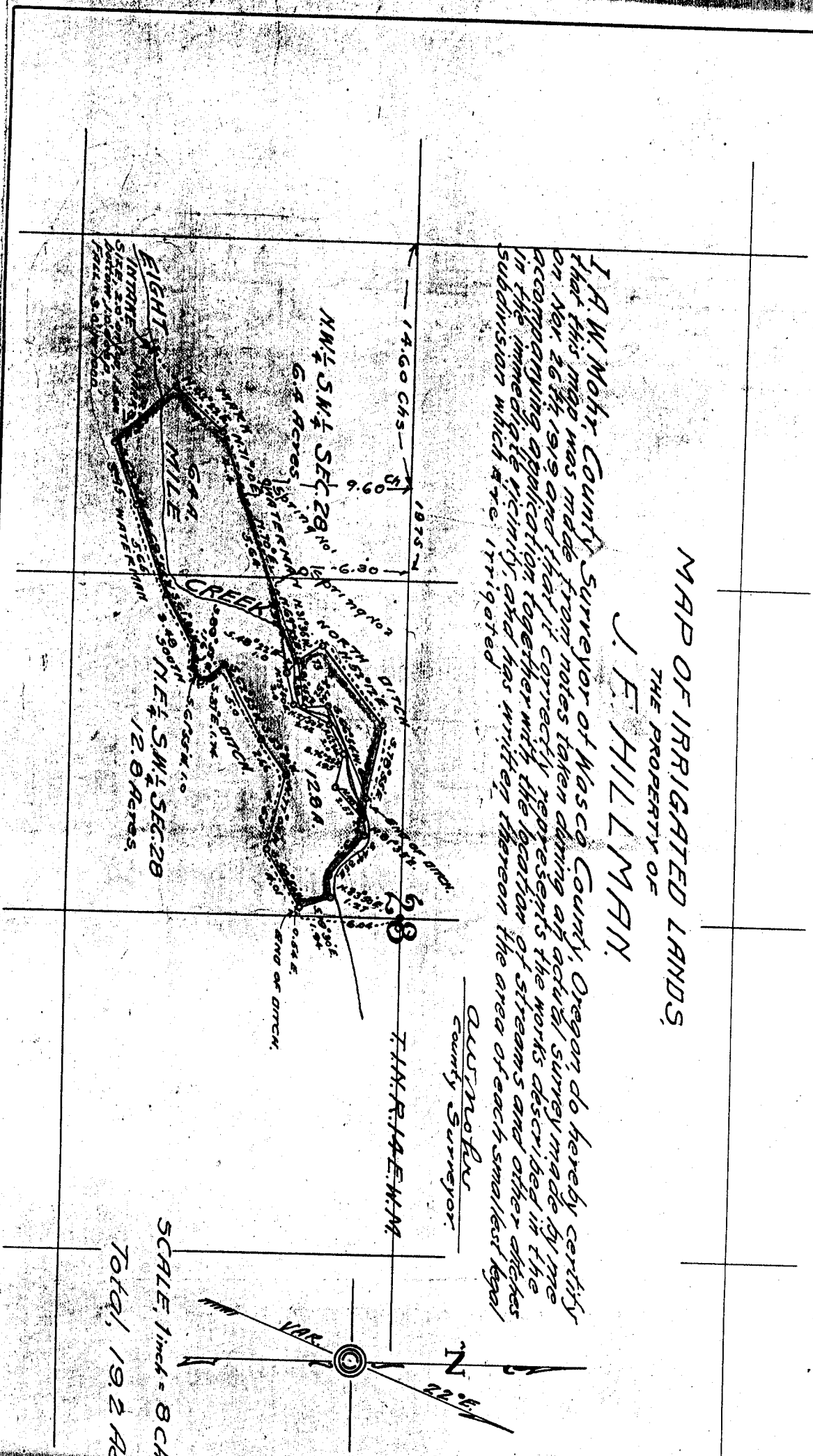
MAP OF IRRIGATED LANDS,
THE PROPERTY OF

J. F. HILLMAN.

I. A. W. Mohr, County Surveyor of Wasco County, Oregon, do hereby certify that this map was made from notes taken during an actual survey made by me on Nov. 26th 1919 and that it correctly represents the works described in the accompanying application together with the location of streams and other ditches in the immediate vicinity, and has written thereon the area of each smallest legal subdivision which are irrigated.

AUSTIN
County Surveyor

T. H. RAEMAN
County Surveyor



SCALE: 1 inch = 8 CHAINS
Total, 19.2 Acres

Eight mile Cr P.O.D. = 15.6 chains S and 6.8 chains E of W/4 Cor Sec 28