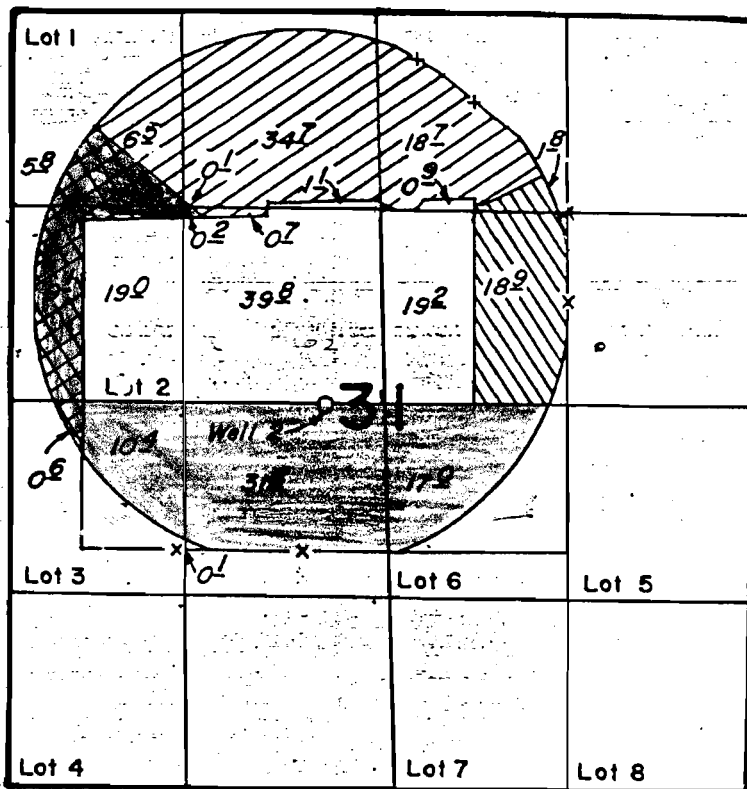





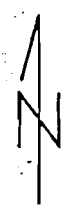
657

47621
56506
T 5363

T.26S., R.14E., W.M.



-  G-9288
-  T-5363
-  G-11072



SCALE: 4" = 1 MILE

Well Loc: 2600' S., & 2900' W., from the NE corner Section 31

FINAL PROOF SURVEY UNDER

TRANSFER NOS. T-5363 & T-5364

G-11072 G-10227

Application No. G-9288. Permit No. G-8709.....

IN NAME OF

MICHAEL W. MATTIS

Surveyed July 27, 1983, by L. M. TOLL.....

Oct. 12, 1984, by P. PAGTER