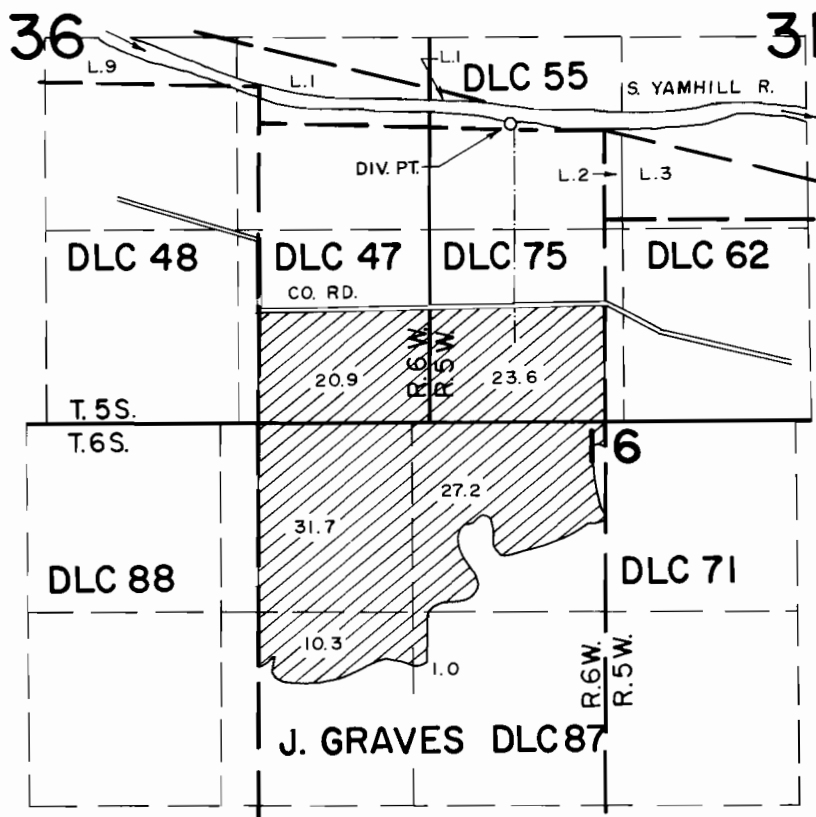


T. 5 & 6 S., R. 5 & 6 W., W. M.



DIV. PT. LOCATION: 640 FT. N. & 640 FT. W. FROM THE N.W. CORNER OF McCANE DLC 62.

FINAL PROOF SURVEY UNDER



SCALE: 4" = 1 MILE

Application No. 51876 Permit No. 39048
IN NAME OF

.....RONALD L. PITMAN.....

Surveyed OCT. 3, 1984, by *P. Pagter*.....