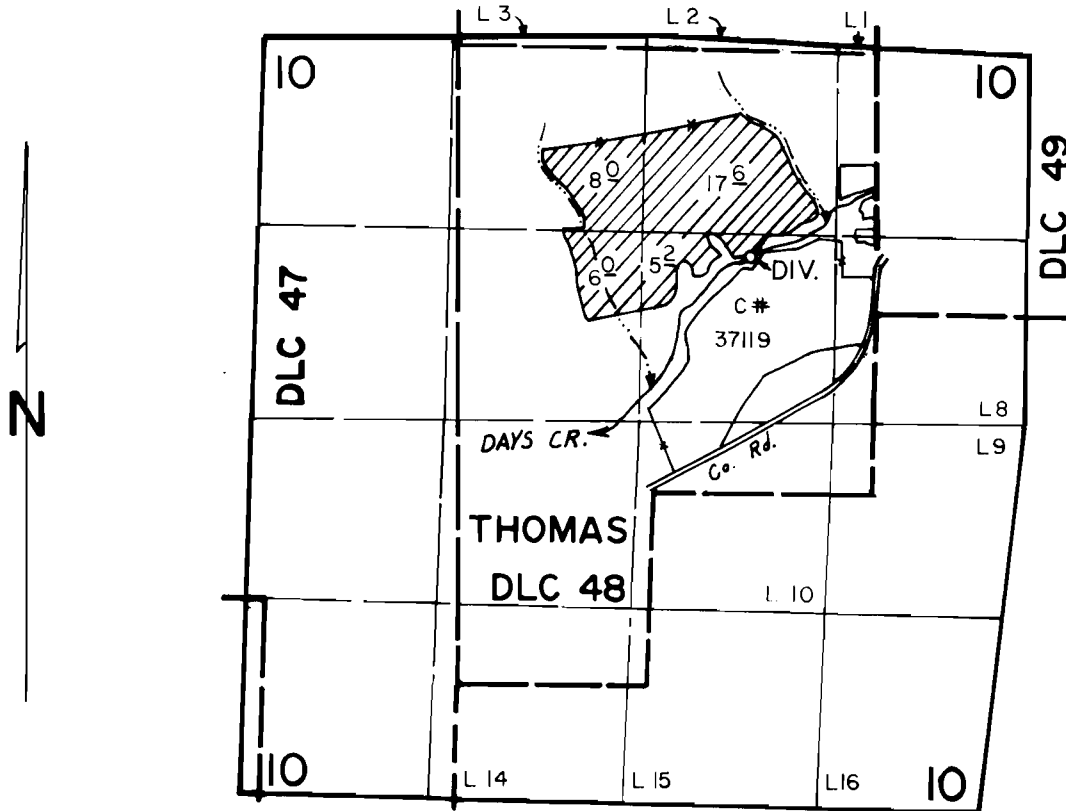


T.30S., R.4W., W.M.



DIV. PT. LOC. 400' N. & 870' W. FROM S.W. COR. DLC 49.

SCALE: 4" = 1 mile

FINAL PROOF SURVEY
UNDER

Application No. 53480. Permit No. 39785.....
IN NAME OF

M. R. LONG

Surveyed AUG 23, 1983, by J. S. DONALDSON