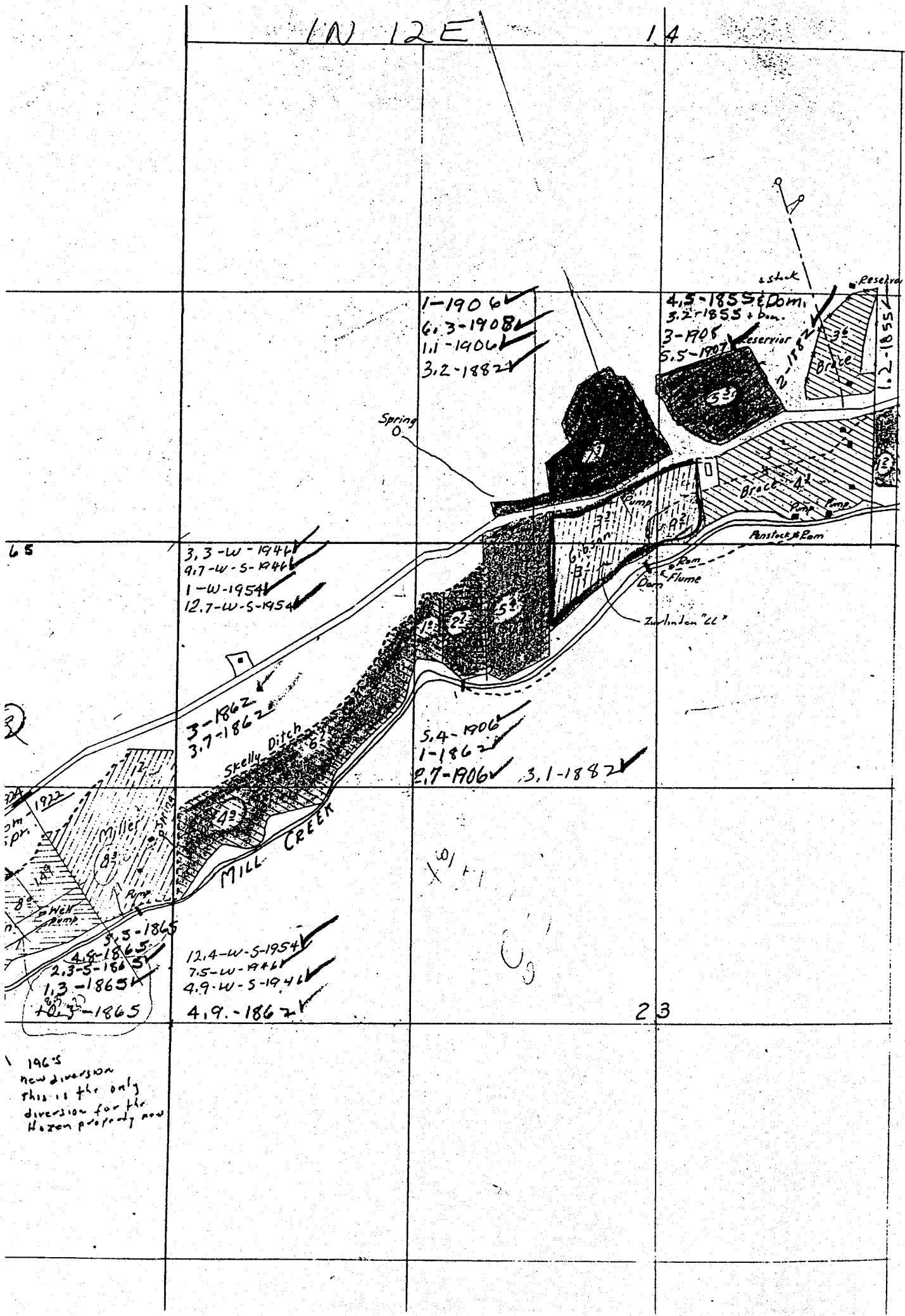


1N 12E 14



1-1906 ✓
 6.3-1908 ✓
 1.1-1906 ✓
 3.2-1882 ✓

4.5-1855 ✓ Dom.
 3.2-1855 ✓ Dam.
 3-1905 ✓ Reservoir
 5.5-1907 ✓

3.3-W-1946 ✓
 9.7-W-5-1946 ✓
 1-W-1954 ✓
 12.7-W-5-1954 ✓

3-1862 ✓
 3.7-1862 ✓

5.4-1906 ✓
 1-1862 ✓
 2.7-1906 ✓ 3.1-1882 ✓

5.5-1865 ✓
 4.9-1865 ✓
 2.3-5-1865 ✓
 1.3-1865 ✓
 10.3-1865 ✓

12.4-W-5-1954 ✓
 7.5-W-1946 ✓
 4.9-W-5-1946 ✓
 4.9-1862 ✓

1965
 new diversion
 this is the only
 diversion for the
 Hazen property now

23