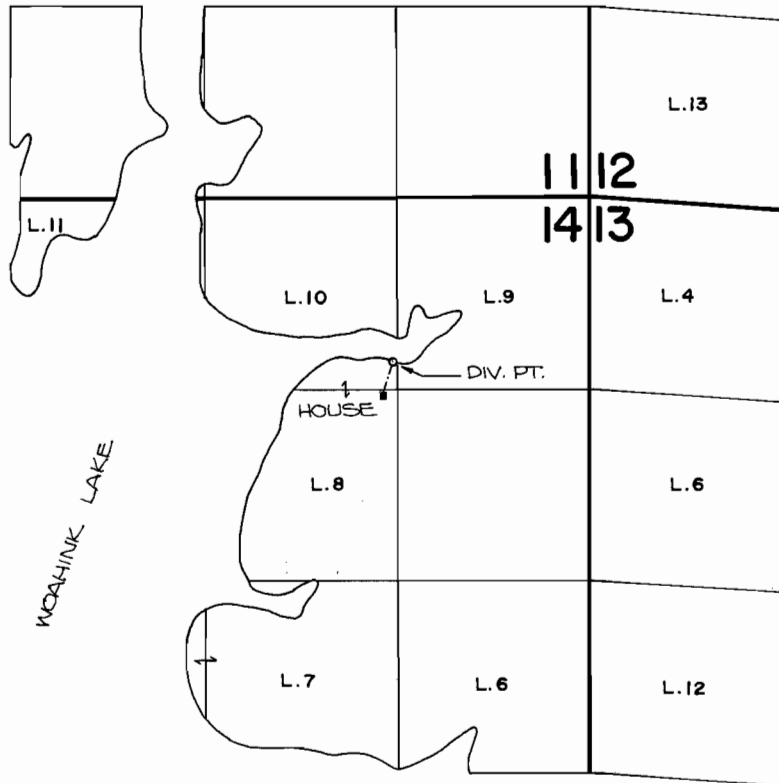


T.19S., R.12W., W. M.



DIV. PT. LOCATION: 1490 FT. N. AND 1350 FT. W. FROM THE E. 1/4 CORNER OF SECTION 14.

FINAL PROOF SURVEY UNDER

Application No. 61141..... Permit No. 45422.....
IN NAME OF

.....YOSHIZO MACHIDA.....

Surveyed JULY 16, 1984, by *P. Paster*.....



SCALE: 4" = 1 MILE