

12.6-1945 ✓
12.6-S-W-1955 ✓

211.2 Ac. - W X
1945

-1945 ✓
S-W-1955 ✓

33.6-1945 ✓
33.6-S-W-1953 ✓
3.6-1946 ✓

7.6-1946 ✓

0.3-1859 ✓

5.8
4.7-1
Dom-1

-1945 ✓
S-W-55 ✓

30-1945 ✓
30-S-W-55 ✓
11.4-1946 ✓

29.1-1946 ✓
0.3-W-1945 X

15.8-1859
2.8-1859
0.8-W-1945 X

1945 ✓
U-55 ✓

29.4-1945 ✓
29.4-S-W-55 ✓
10.6-1946 ✓

7-1859 ✓
8.6-1946 ✓
11.2-W-1945 ✓
5-S-1960 ✓

11-1859
0.1-1946 ✓
2.2-W-1945 ✓
0.8-1960
2.2-S-1960 ✓

5 ✓
-55 ✓

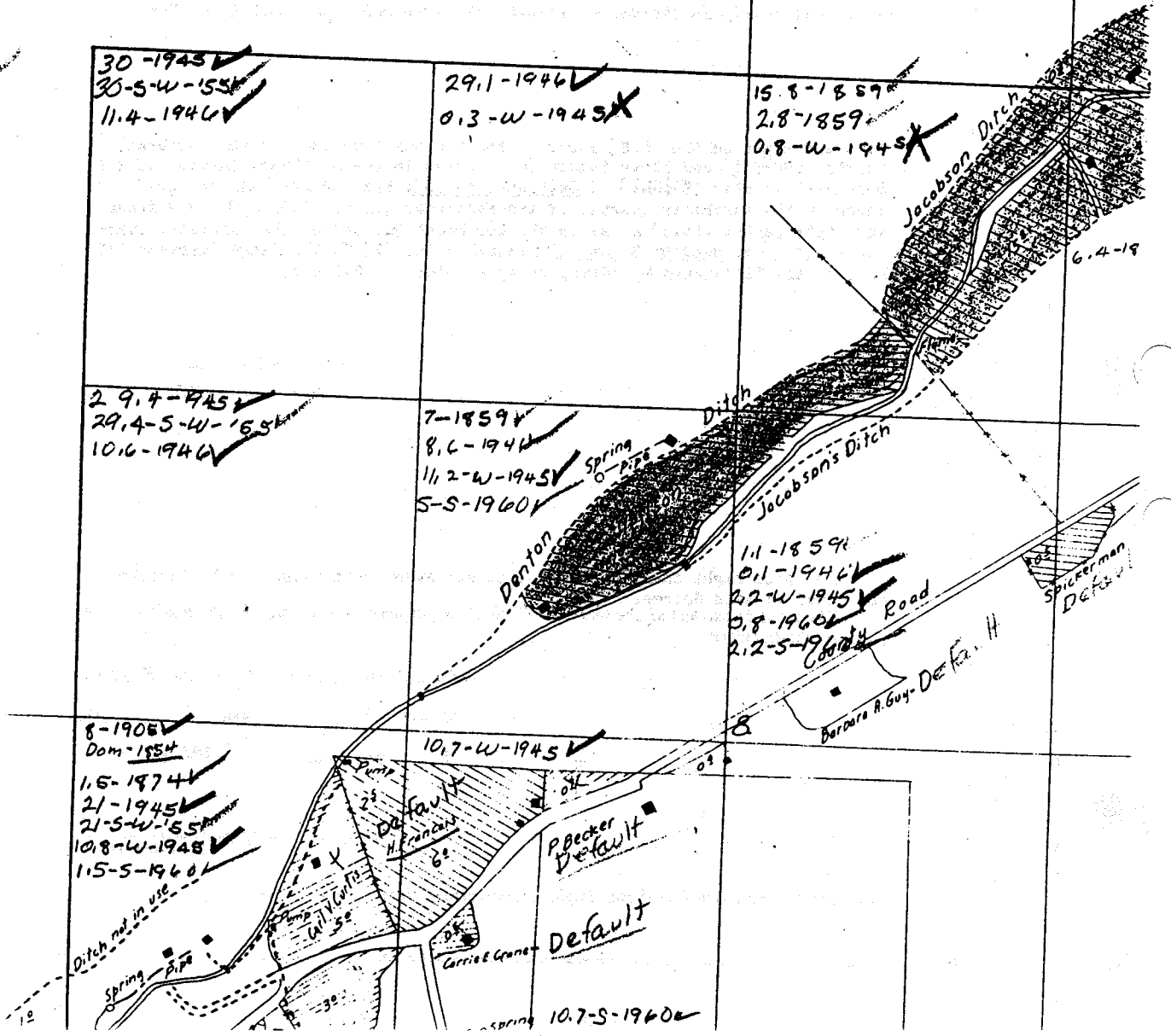
8-1905 ✓
Dom-1854
1.6-1974 ✓
21-1945 ✓
21-S-W-55 ✓
10.8-W-1948 ✓
1.5-S-1960 ✓

10.7-W-1945 ✓

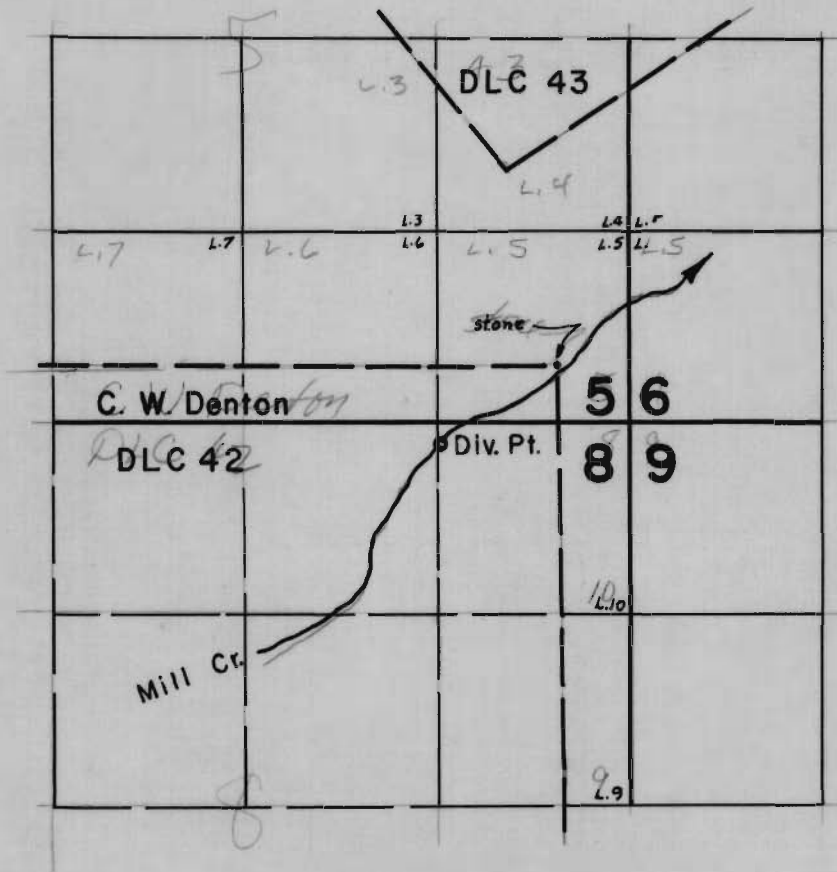
Ditch not in use
Spring - Pipe
Pump
W. V. Curtis
W. 50
30

Pump
D. Fault
H. Prandon
60
Carried Gravel
Spring
10.7-S-1960

Becker
Default
Default



T. 1 N. R. 13 E. W.M.



FINAL PROOF SURVEY
UNDER

RECEIVED
DEC 14 1962
STATE ENGINEER
SALEM, OREGON

Application Transfer No. W-81 No. _____
IN NAME OF

_____ **G. S. WILLIAMS** _____

Surveyed April 4, 1962, by *A. W. Zebounek*