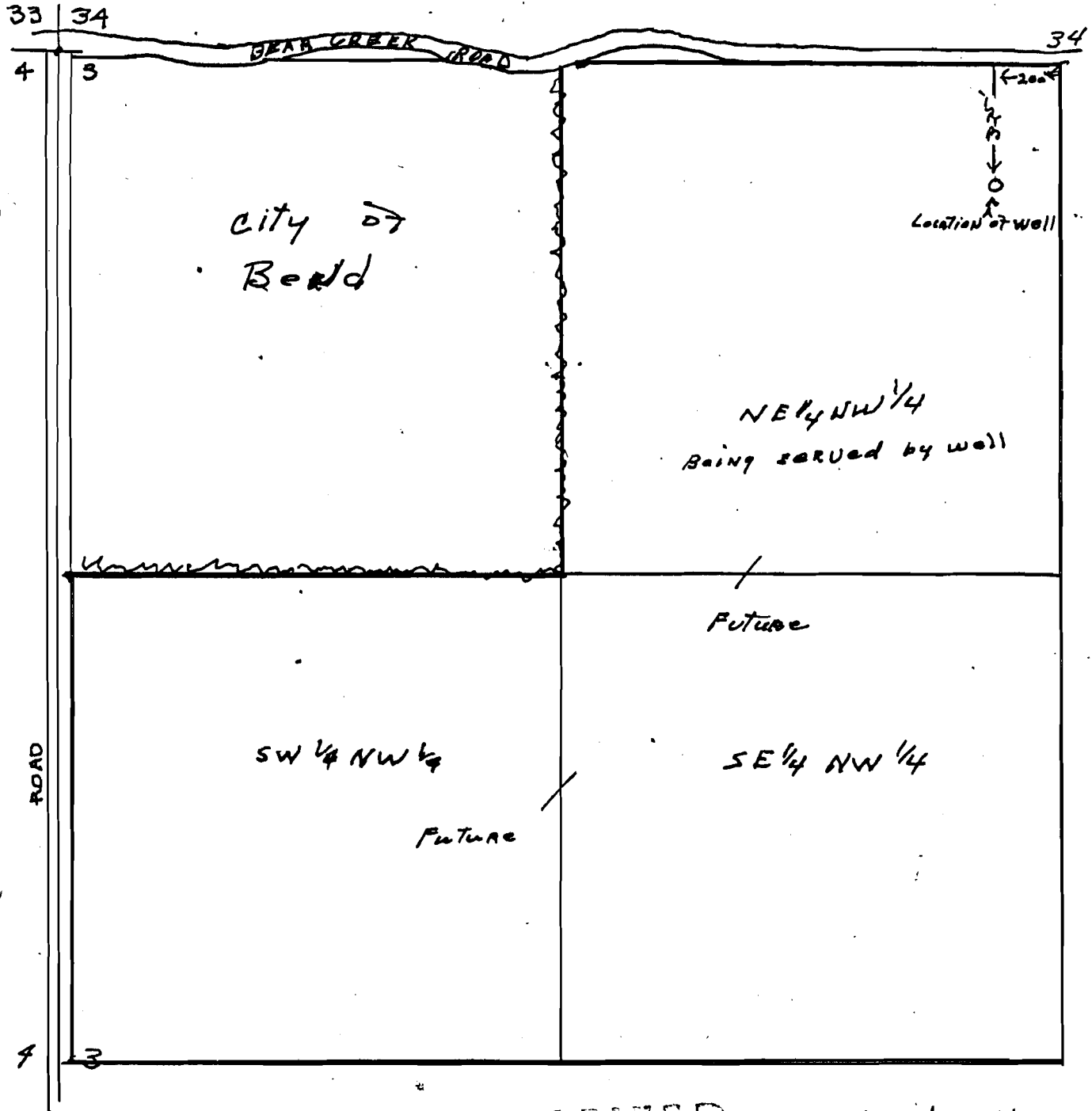


SEC. 3 T18S R12E W1M

DESCHUTES COUNTY

SCALE: 1" = 400'

cont. 57052
insp.
NE 1/4 NW 1/4
83 families



RECEIVED
MAY 21 1966
SURVEY ENGINEER
STATE OF OREGON

Application No G-3602
Permit No. G-3389

cont. 57052
insp.

G-3389