

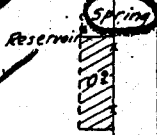
3.6-W-1954 ✓  
10-1882 ✓  
0.5-W-1955 & S ✓

0.9-W-'54 ✓  
1.5-W-1955 & S ✓

6-W-1952 ✓  
6-S-W-'53 ✓

13

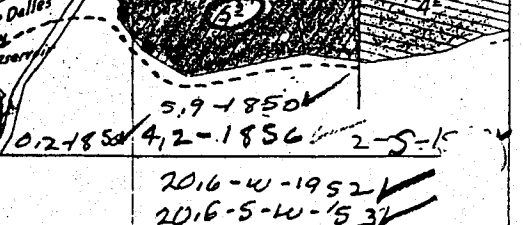
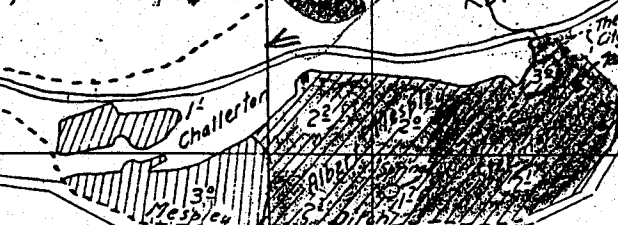
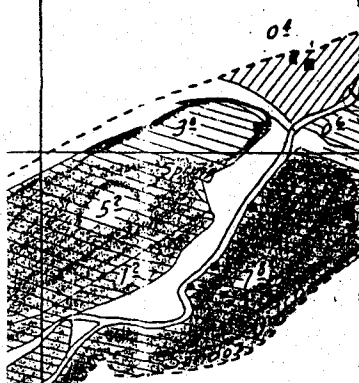
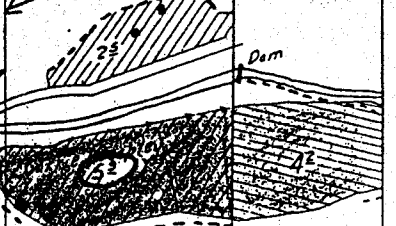
3.8-1855 ✓  
0.2-1888 ✓  
6.1-W-1954 ✓



1.1-1855 ✓  
2.2-1856 ✓  
1-1856 ✓  
5.2-1953 ✓-W  
2.1.5-W-1954 ✓  
9.1-W-1955 & S ✓

2.0-1854 ✓  
0.2-1856 ✓  
3.6-1856 ✓  
23.1-W-1955 & S ✓

4.5-1854 ✓  
8.4-W-1952 ✓  
8.4-S-W- ✓



20.5-W-1954 ✓  
0.1-W-1954 ✓  
9-1855 ✓  
5.2-1855 ✓

10-W-1955 & S ✓  
4.2-W-1954 ✓  
2.4.7-1953 ✓-W  
2.3-1856 ✓  
3.0-1855 ✓

27.8-W-1955 & S ✓  
2.1-1856 ✓  
1.7-1856 ✓

20.6-W-1952 ✓  
20.6-S-W-'53 ✓

3.8-W-1953 ✓