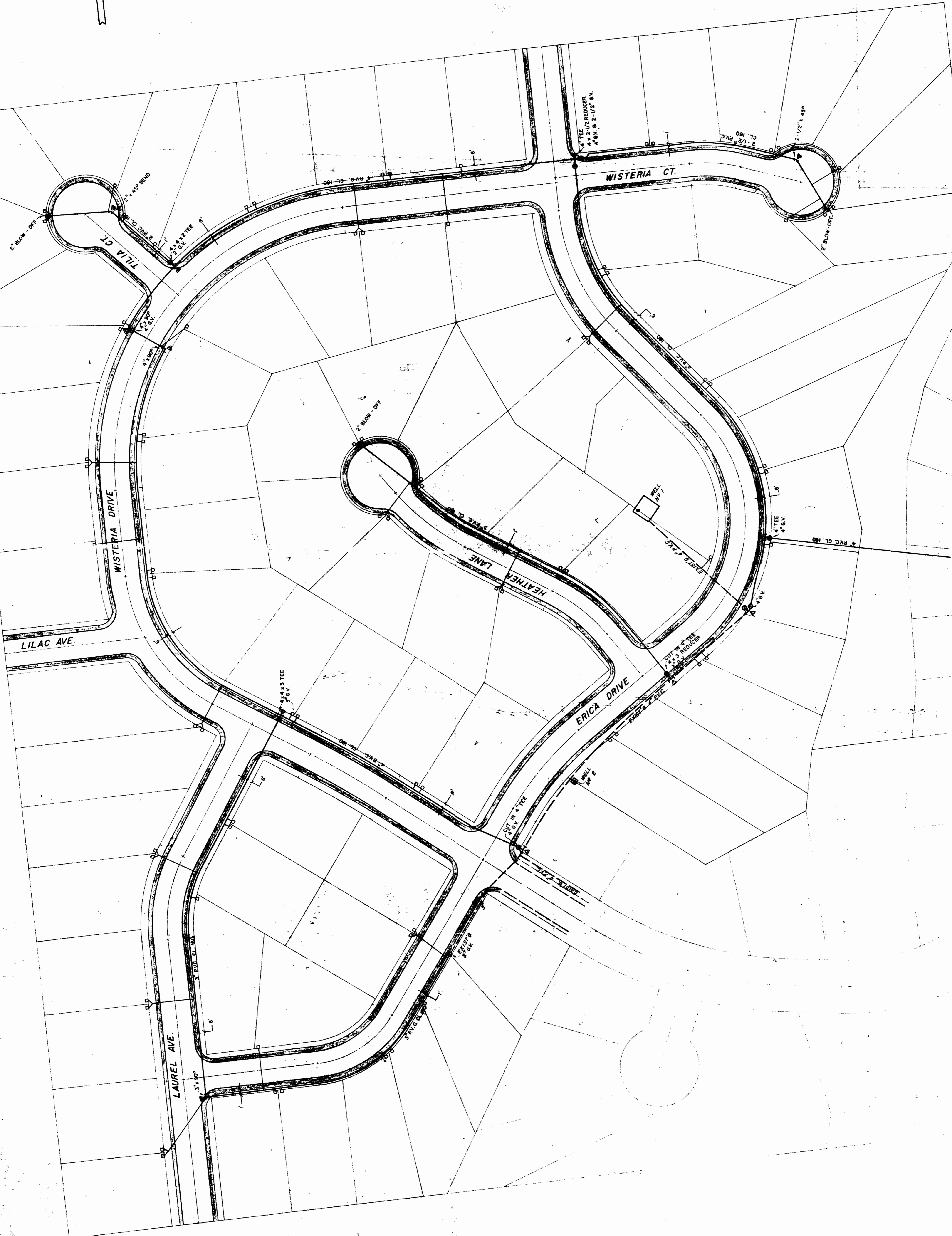
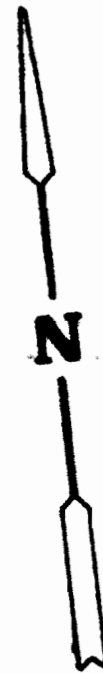


- WATER DISTRIBUTION SYSTEM -



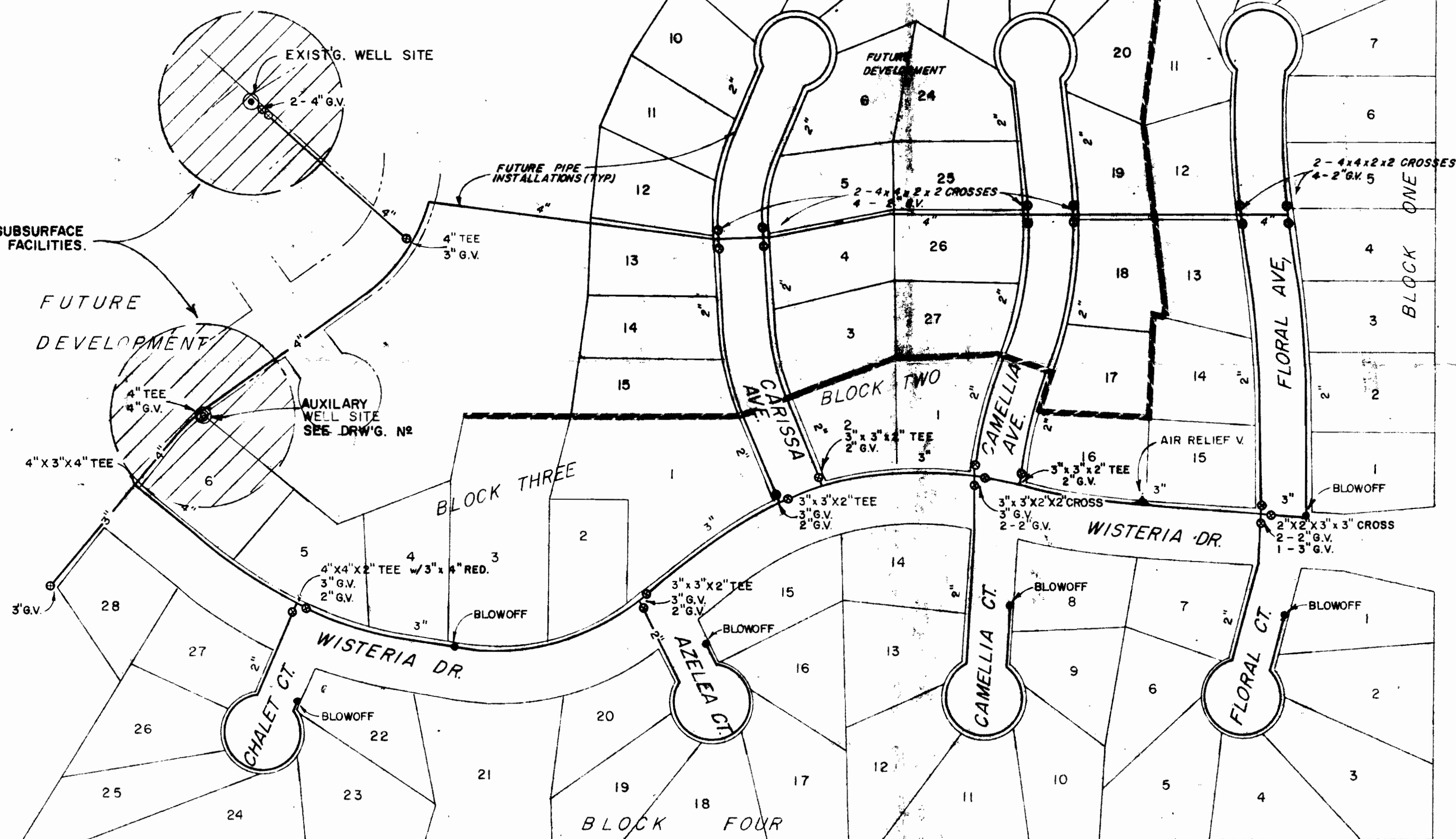
SCALE: 1" = 50'	DATE: JUNE, 1972	JOB: 286
DSN: C.H.S.	WESTECH ENGINEERING, INC.	
DRN: J.C.G.	200 LANCASTER DR. S.E. SALEM, OREGON	
CKD:	SHEET NO. 11	OF 13

RECEIVED
JAN 16 1973
STATE ENGINEER
SALEM, OREGON



AREAS FREE OF SUBSURFACE SEWAGE DISPOSAL FACILITIES.

FUTURE DEVELOPMENT



MARKET ROAD NO 11

MKT. RD. 429

NOTES

ALL PIPE IS P.V.C. CLASS 160 AS APPROVED BY THE A.W.W.A., A.S.T.M. & N.S.F.
 INSTALLATION SHALL BE IN ACCORDANCE WITH THE MANUFACTURERS "INSTALLATION GUIDE" & THE STATE & COUNTY PLUMBING CODES PERTAINING TO THE USE OF P.V.C. PIPE FOR POTABLE WATER SYSTEMS
 THERE WILL BE A MIN. OF 30" BACKFILL WITH MATERIAL AS SPECIFIED BY THE ENGINEER

RECEIVED
 JAN 18 1973
 STATE ENGINEER
 SALEM, OREGON



REVISED 12-15-71 J.G.		PORTLAND OREGON	
WILLAMETTE	T.E.C. DEVELOPMENT, INC.		
DRAFTING			
SERVICE		DEER CREEK ESTATES	
		PLAN - WATER SYSTEM	
SCALE	1" = 100'	DATE	SEPT. 1971
BY	D.N.	NO.	70-055