

WATER RIGHTS MAP FOR

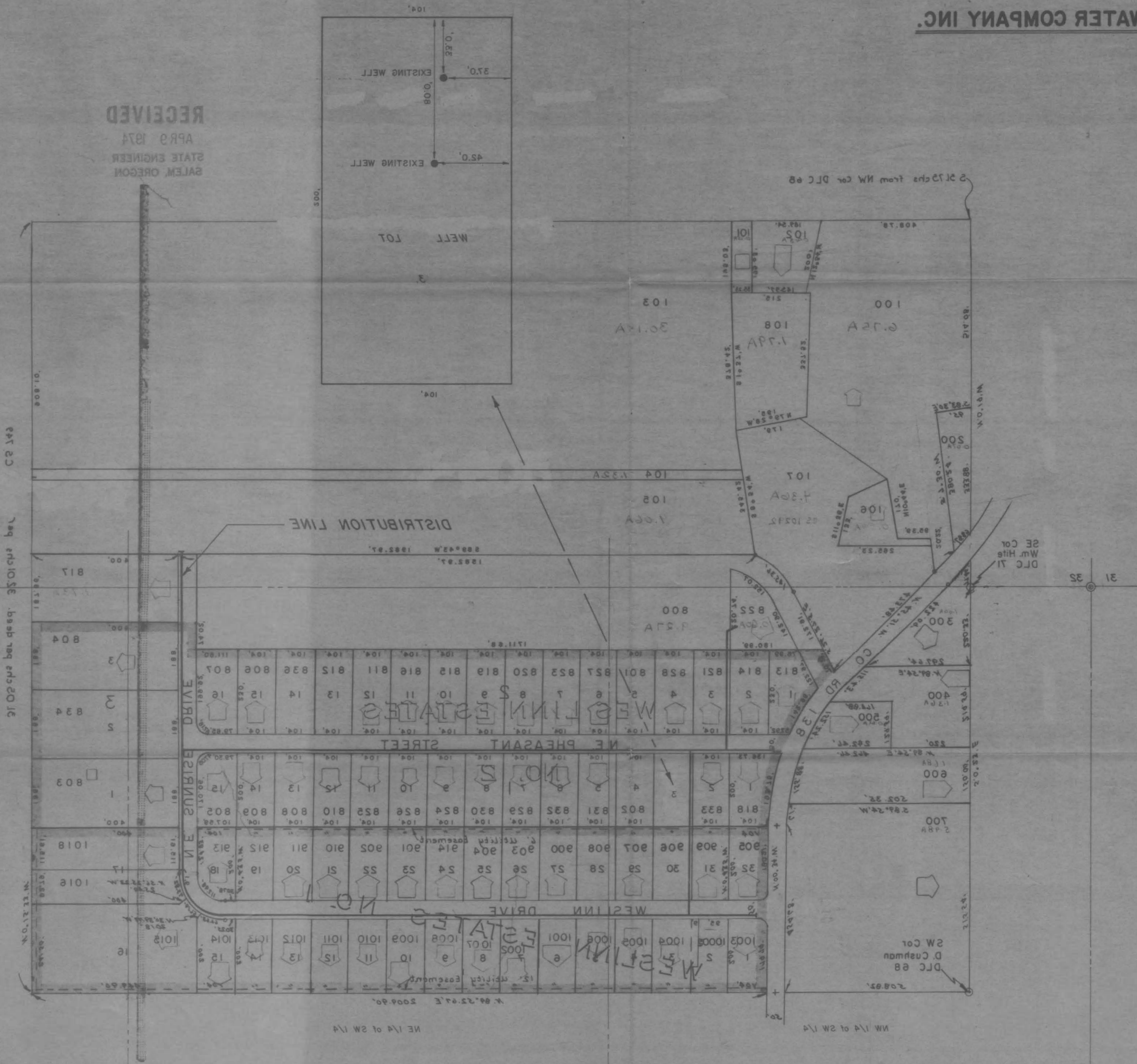
WES LINN WATER COMPANY INC.

Application No. G-6183
Permit No. G 5860

SW 1/4 Sec 35C T11 S, R 4 W, W.M.

1" = 200'
SI JUNE, 1973

RECEIVED
APR 9 1974
STATE ENGINEER
SALEM, OREGON



KRANS & DALKE
Civil Engineers
P.O. Box 140
Albany, Oregon 97321