

RECEIVED

RECEIVED

SEP 24 1975

OCT 15 1975

WATER RESOURCES DEPT. WATER RESOURCES DEPT.  
SALEM, OREGON SALEM, OREGON

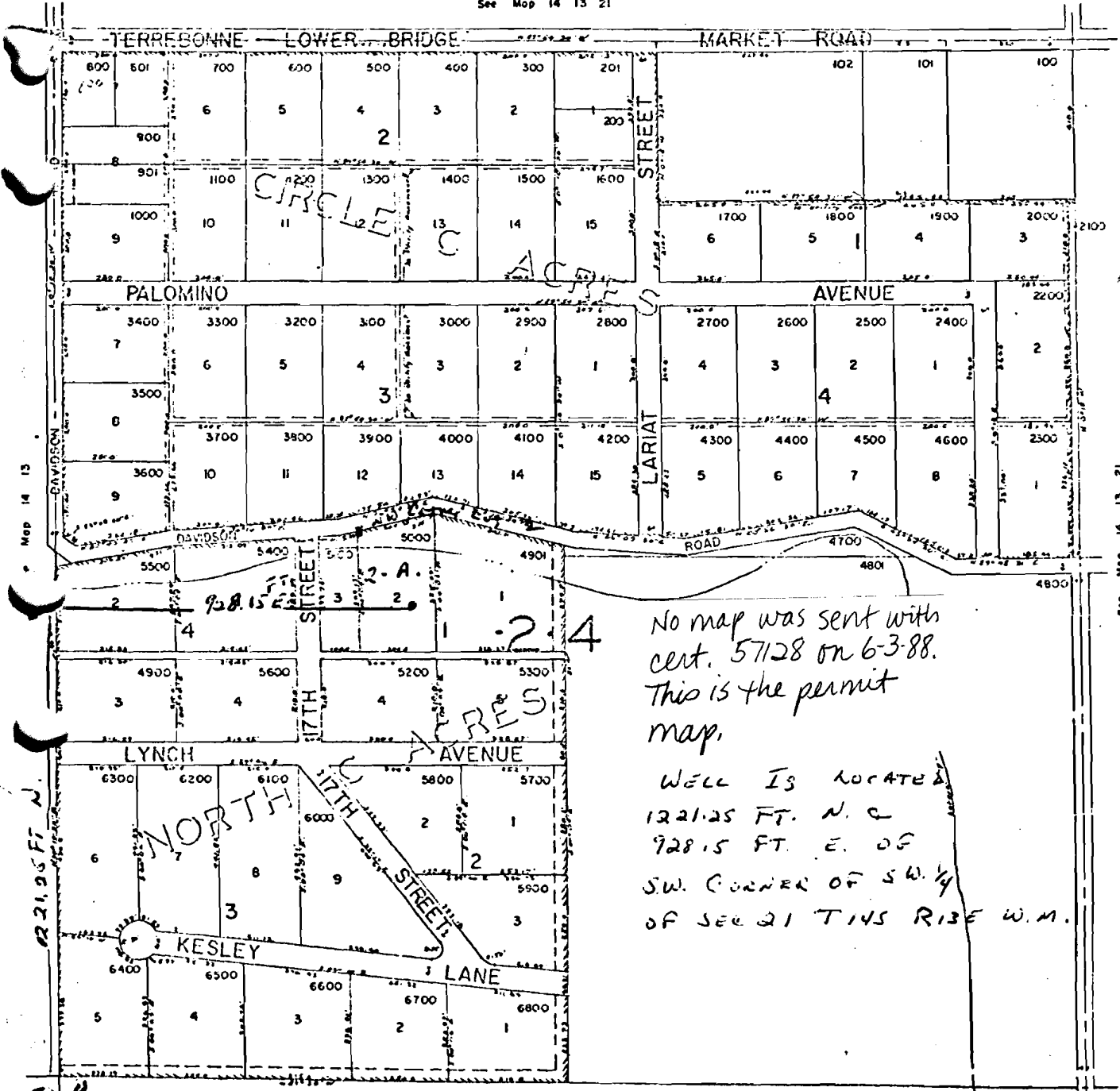
SW 1/4 SEC. 21 T.14S. R.13E.W.M.  
DESCHUTES COUNTY  
1"=400'

14 13 21C



Application No. G-7119  
Permit No. G 6577

See Map 14 13 21



221.25 FT. N.

SW 1/4  
of SW 1/4  
of SEC. 21

See Map 14 13 28

14 13 21C

G-6577

57128