

Map to accompany application of Jerry Brown . 57140

**RECEIVED**

AUG 24 1976

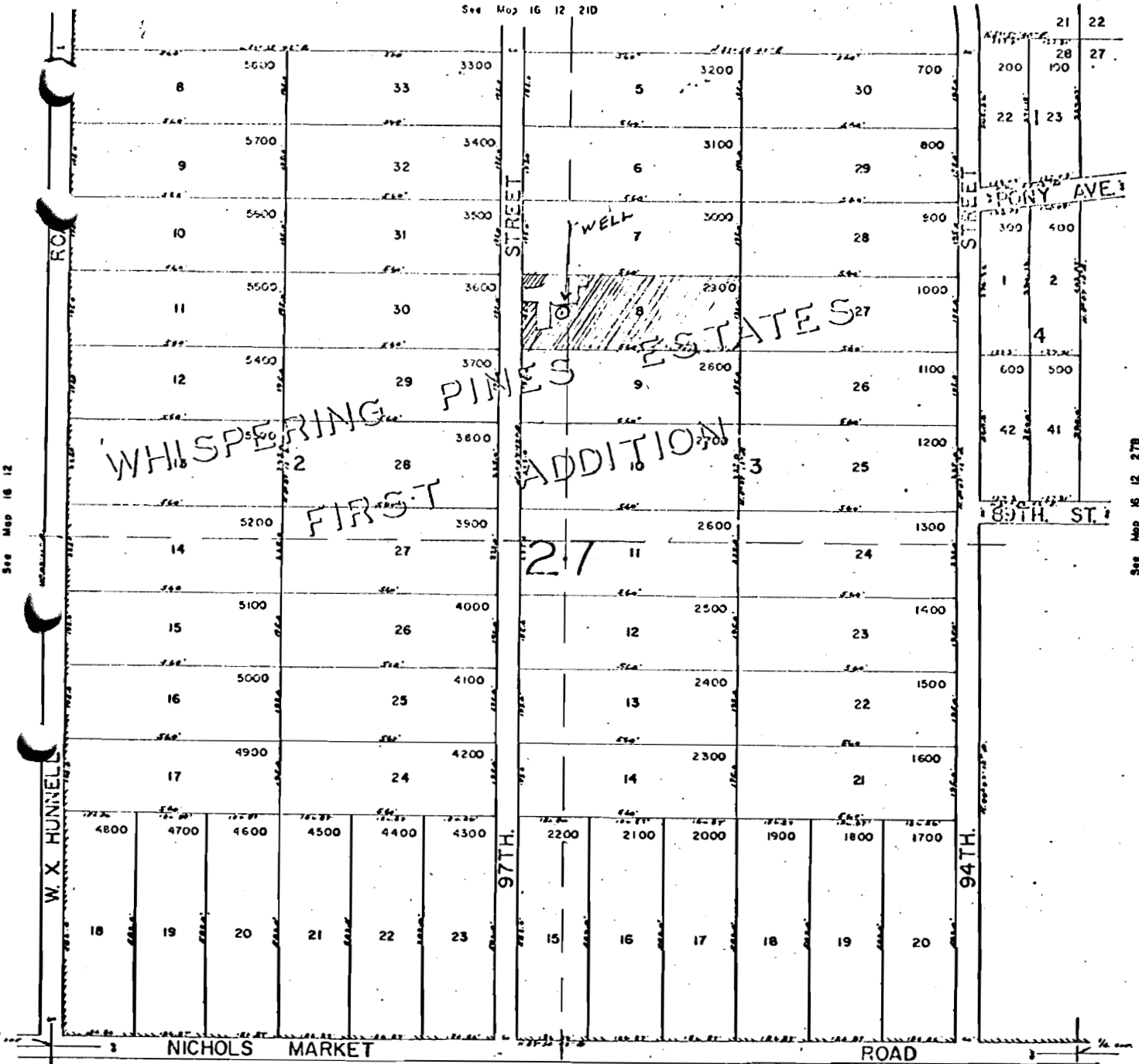
WATER RESOURCES DEPT  
SALEM, OREGON

NE 1/4 SEC. 28 T16S. R12E.W.M.  
DESCHUTES COUNTY

16 12 26A

4-208  
1" = 100'

See Map 16 12 21D



See Map 16 12

See Map 16 12 27B

See Map 16 12 28

See Map 16 12

Application No. G-7491  
Permit No. G 6967

No map was sent with  
cert. # 57140 on 6-3-88

16 12 28A

9-6967