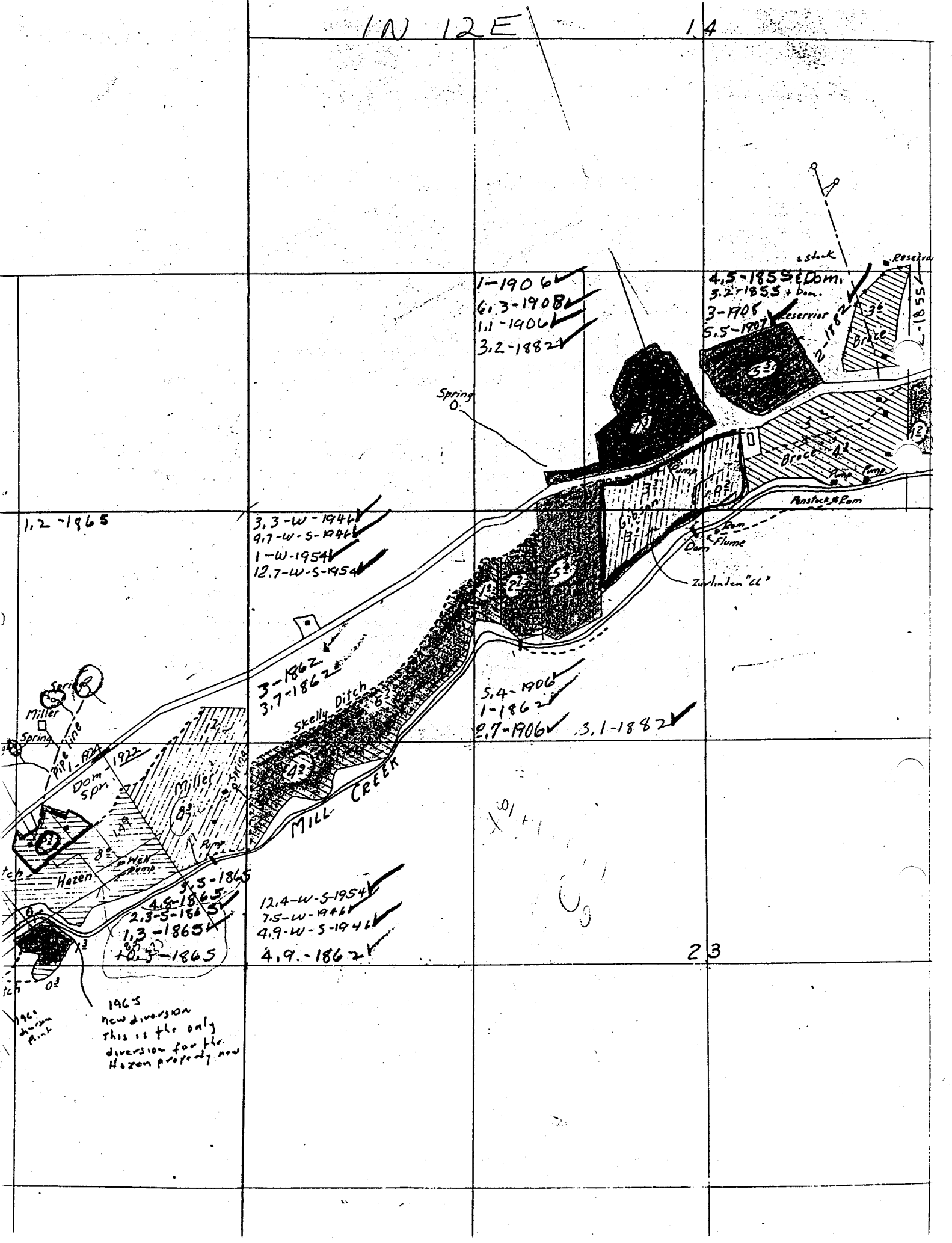


1N 12E

14



1-1906 ✓  
 6.3-1908 ✓  
 1.1-1906 ✓  
 3.2-1882 ✓

4.5-1855 ✓ Dom.  
 5.2-1855 + Dam.  
 3-1905 ✓ Reservoir  
 5.5-1907 ✓

3.3-W-1946 ✓  
 9.7-W-5-1946 ✓  
 1-W-1954 ✓  
 12.7-W-5-1954 ✓

3-1862 ✓  
 3.7-1862 ✓

5.4-1906 ✓  
 1-1862 ✓  
 2.7-1906 ✓ 3.1-1882 ✓

12.5-1865 ✓  
 4.6-1865 ✓  
 2.3-5-1865 ✓  
 1.3-1865 ✓  
 7.3-1865 ✓

12.4-W-5-1954 ✓  
 7.5-W-1946 ✓  
 4.9-W-5-1946 ✓  
 4.9-1862 ✓

1.2-1965

1965  
 new diversion  
 this is the only  
 diversion for the  
 Hazen property now

23