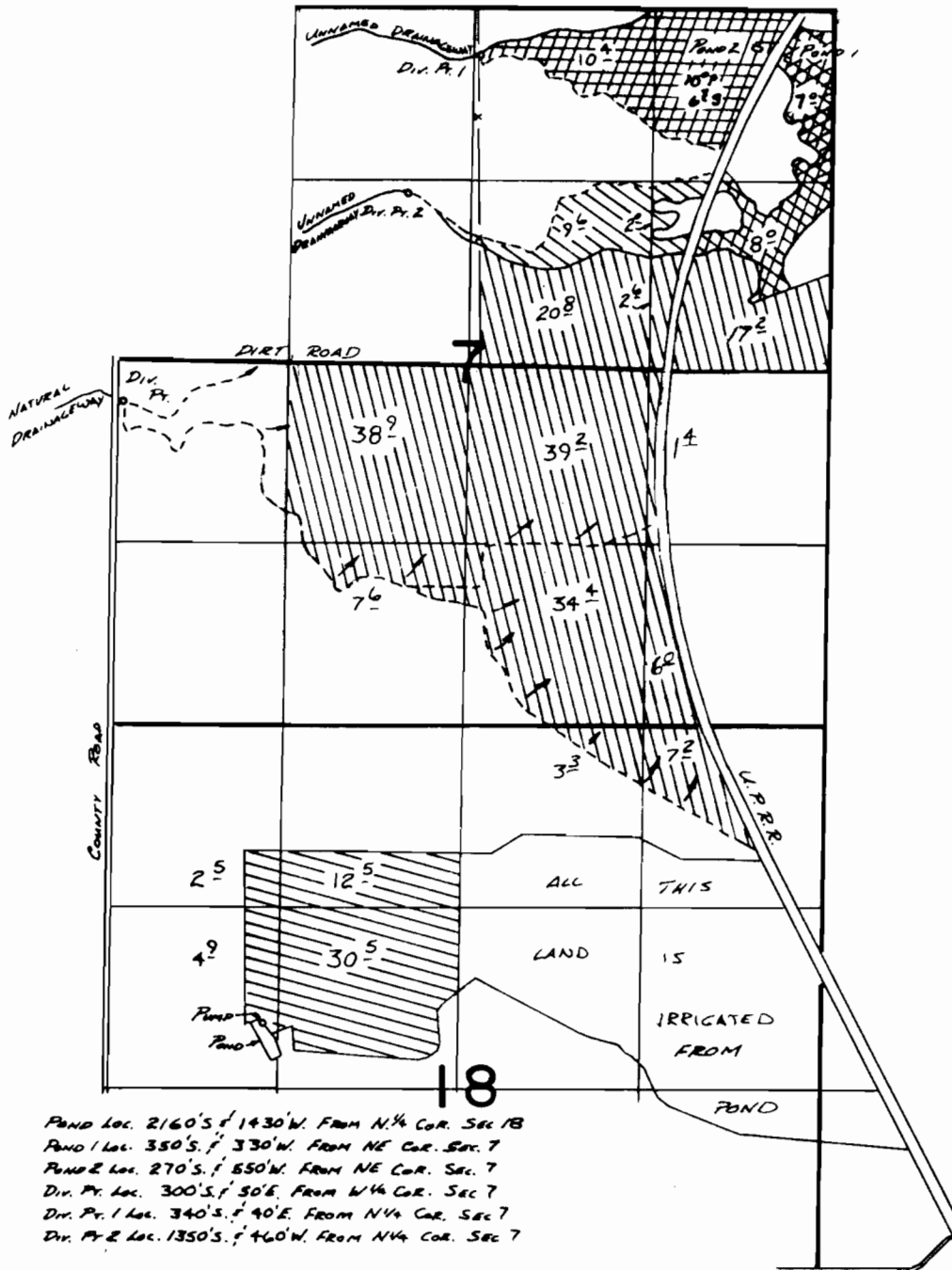


T. 7S., R. 39E., W.M.



POND LOC. 2160'S. & 1430'W. FROM N. 1/4 COR. SEC 18
 POND 1 LOC. 350'S. & 330'W. FROM NE COR. SEC. 7
 POND 2 LOC. 270'S. & 550'W. FROM NE COR. SEC. 7
 DIV. PT. LOC. 300'S. & 50'E. FROM N 1/4 COR. SEC 7
 DIV. PT. 1 LOC. 340'S. & 40'E. FROM N 1/4 COR. SEC 7
 DIV. PT. 2 LOC. 1350'S. & 460'W. FROM N 1/4 COR. SEC 7

FINAL PROOF SURVEY





UNDER

49310 36970
 51700 38977
 G-7191 G-6622
 Application No. G-6316 Permit No. G-5932

IN NAME OF

PETER W. SCHOENINGH

Surveyed OCT. 25 1977, by R. F. BARNUM
 RECORDED MAY 26 1982, V. L. CHURCH & B. ESTES

-  PER. G-6622
-  DIV. PT. 1 PER. 38977
-  DIV. PT. 2 PER. G-5932
-  PER. 36970