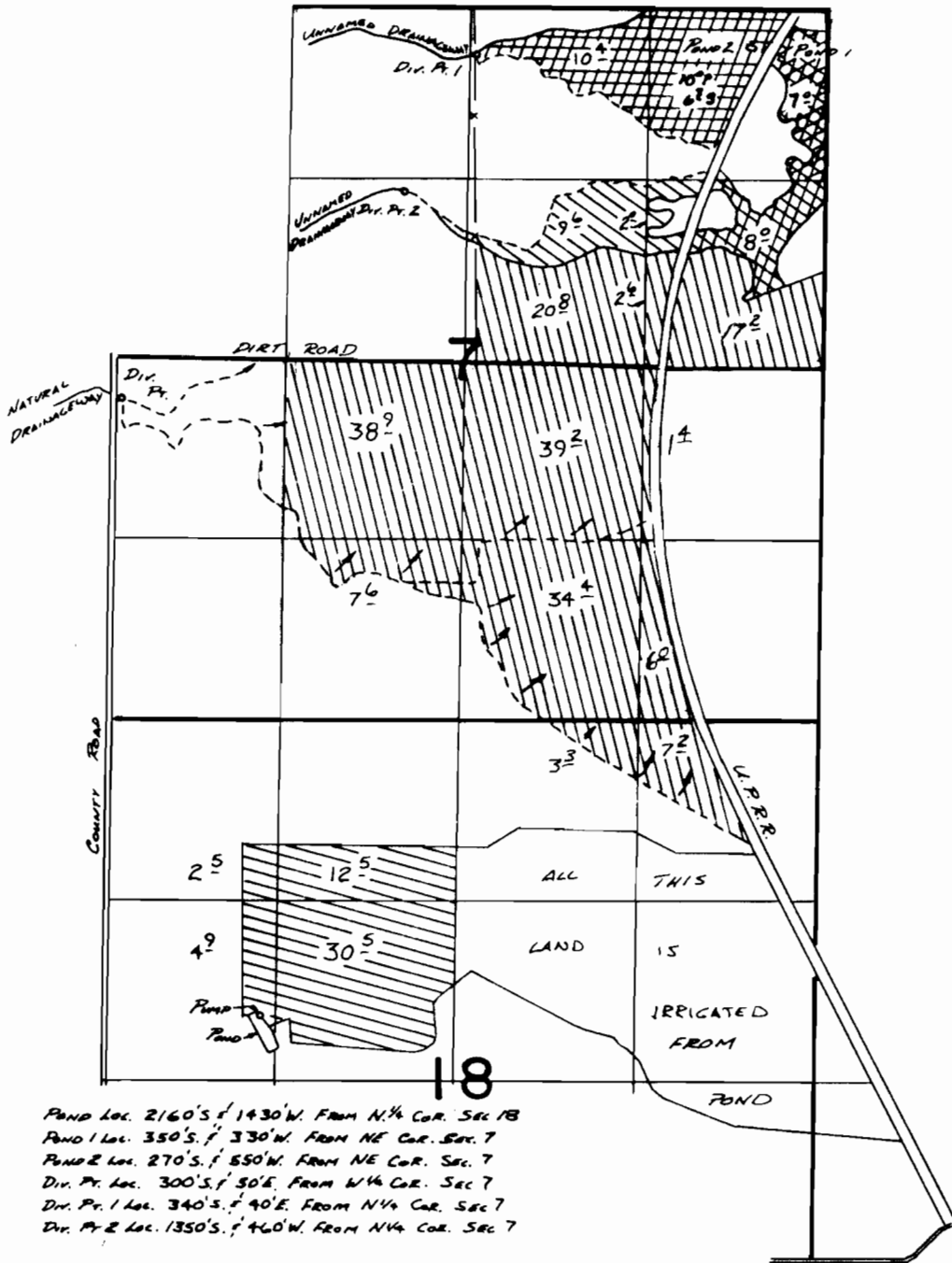


# T. 7S., R. 39E., W.M.



POND LOC. 2160'S. & 1430'W. FROM N. 1/4 COR. SEC 18  
 POND 1 LOC. 350'S. & 330'W. FROM NE COR. SEC. 7  
 POND 2 LOC. 270'S. & 550'W. FROM NE COR. SEC. 7  
 Div. Pt. Loc. 300'S. & 50'E. FROM N 1/4 COR. SEC 7  
 Div. Pt. 1 Loc. 340'S. & 40'E. FROM N 1/4 COR. SEC 7  
 Div. Pt. 2 Loc. 1350'S. & 460'W. FROM N 1/4 COR. SEC 7

## FINAL PROOF SURVEY

UNDER

49310                      36970

51700                      38977

G-7191                     G-6622







Application No. G-6316      Permit No. G-5932

IN NAME OF

**PETER W. SCHOENINGH**

Surveyed Oct. 25 1977, by R. F. BARNUM

RESURVEYED MAY 26 1982, V. L. CHURCH & B. ESTES

-  PER. G-6622
-  Div. Pt. 1 PER. 38977
-  Div. Pt. 2
-  POND 1 PER G-5932
-  POND 2
-  PER. 36970

REVISED 2/12/88

BBB-2N-202

84-L