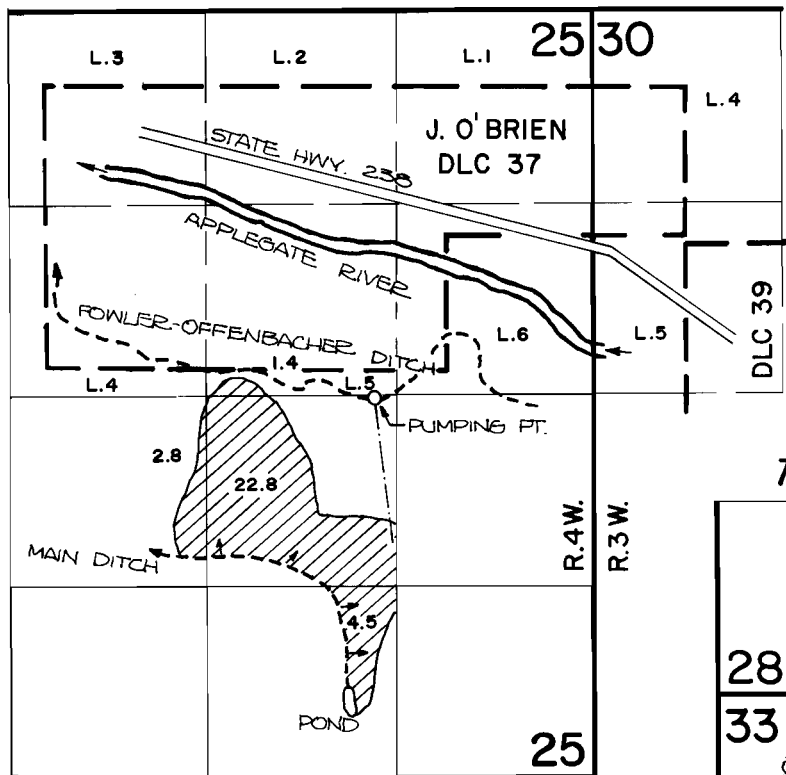
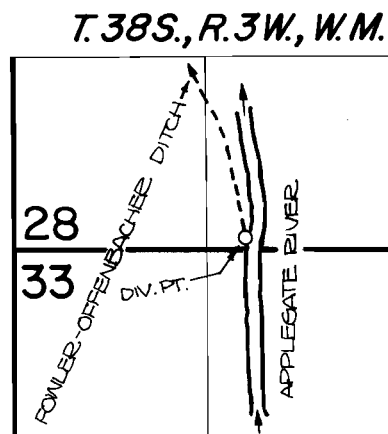


T.38S., R.3 & 4W., W.M.



DIV. PT. IS LOCATED 40' N. AND 1610' E. FROM THE S.W. CORNER OF SECTION 28, T.38S., R.3W., W.M.



FINAL PROOF SURVEY UNDER

Application No. 62061 46020
 50272... Permit No. 37905.....
 IN NAME OF

APPLEGATE BRANGUS RANCH

OCT. 31 1983
 Surveyed JULY 20, 1983, by B. JAMES...