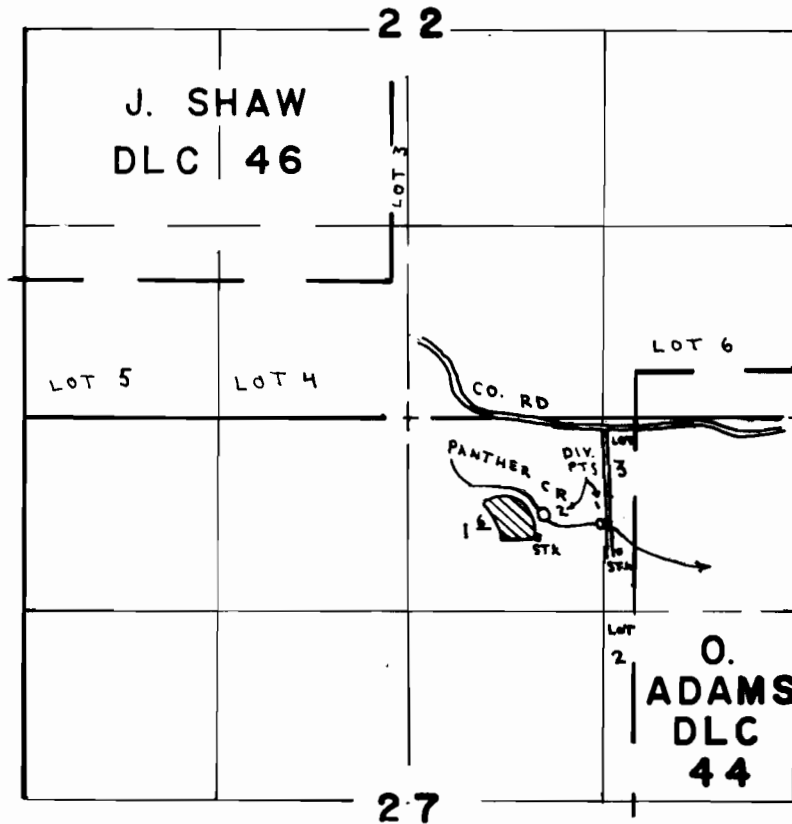


# T. 3 S., R. 5 W. W.M.



DIV. PT. 1 LOC. 740' S. 8 1320' E. OF N. 1/4 COR. SEC. 27  
 DIV. PT. 2 LOC. 670' S. 8 930' E. OF N. 1/4 COR. SEC. 27

4  
 N  
 |  
 SCALE  
 4" = 1 MILE

## FINAL PROOF SURVEY UNDER

Application No. 55150 Permit No. 41989

IN NAME OF

COONRIDGE INC.

Surveyed JUL 24, 1984, by P. PAGTER