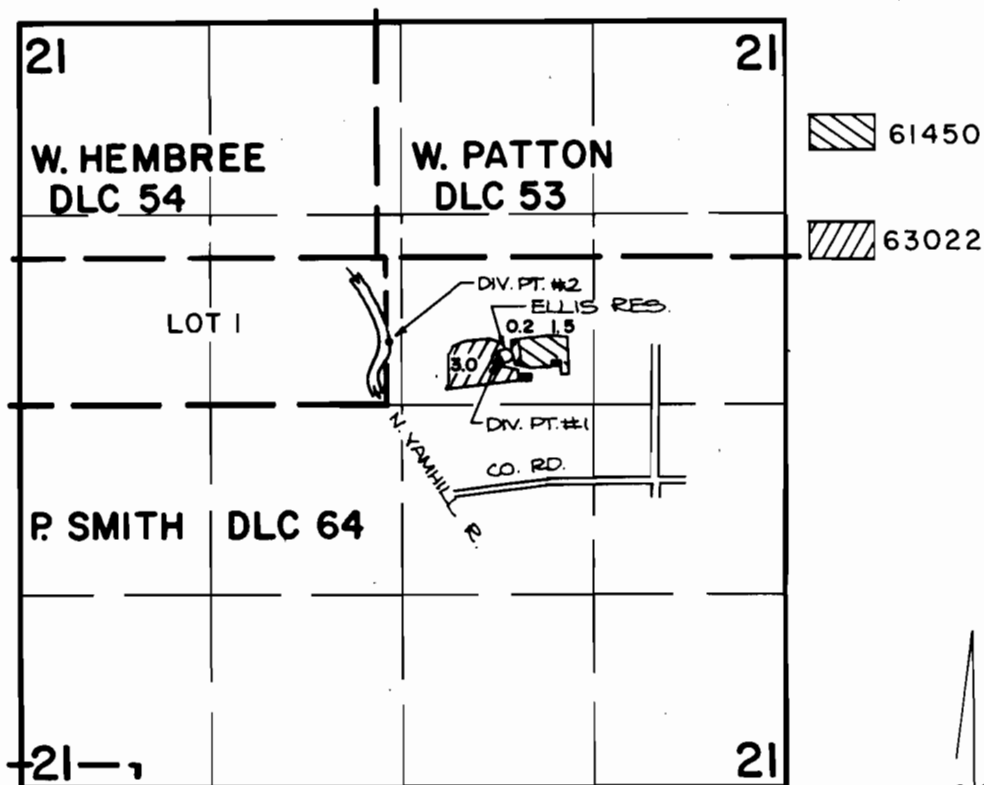


T.3S., R.4W., W.M.



DIV. PT. #1 LOCATION: 2510 FT. S. AND 1960 FT. W.;
 DIV. PT. #2 LOCATION: 2180 FT. S. AND 2710 FT. W.;
 BOTH FROM THE N.E. CORNER OF SECTION 21.

SCALE: 4" = 1 MILE

FINAL PROOF SURVEY UNDER

R-61353 R-8250
 61450 45641
 Application No. 63022. Permit No. 46527.....
 IN NAME OF

.....ESTATE OF RUBY H. ELLIS.....

Surveyed JULY 9, 1984, by P. Patton.....