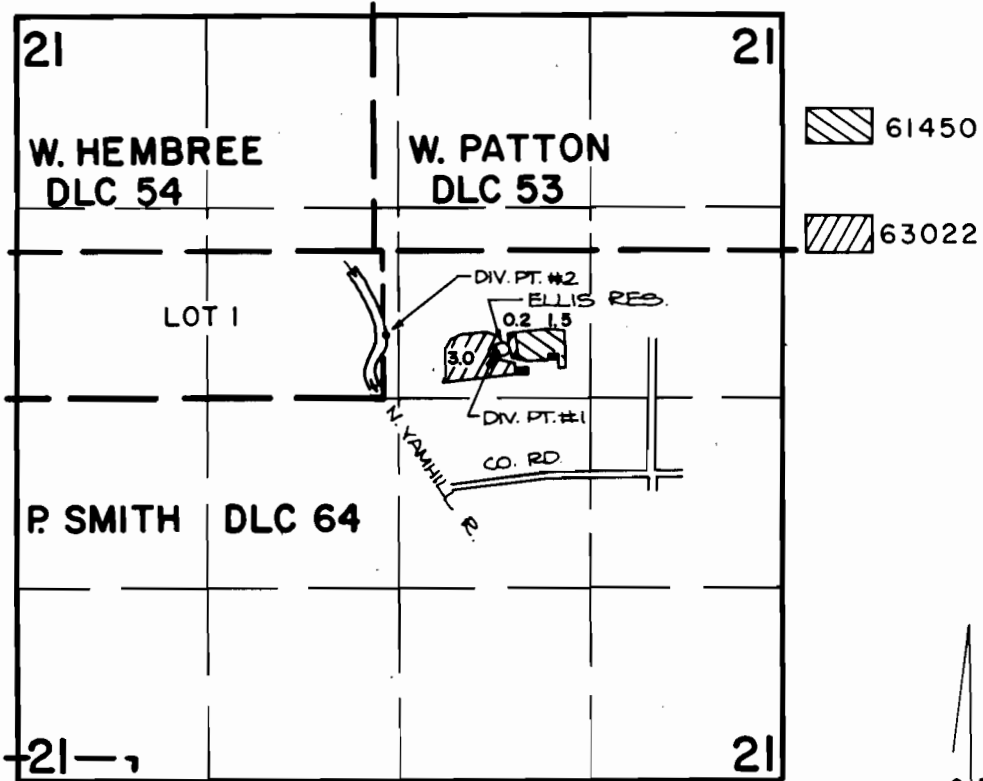


T.3S., R.4W., W.M.



DIV. PT. #1 LOCATION: 2310 FT. S. AND 1960 FT. W.;  
DIV. PT. #2 LOCATION: 2180 FT. S. AND 2710 FT. W.;  
BOTH FROM THE N.E. CORNER OF SECTION 21.

SCALE: 4"=1 MILE

**FINAL PROOF SURVEY**  
UNDER

R-61353                      R-8250  
61450                          45641  
Application No. 63022. Permit No. 46527.....  
IN NAME OF

.....ESTATE OF RUBY H. ELLIS.....

Surveyed JULY 9, 1984, by P. Patton.....