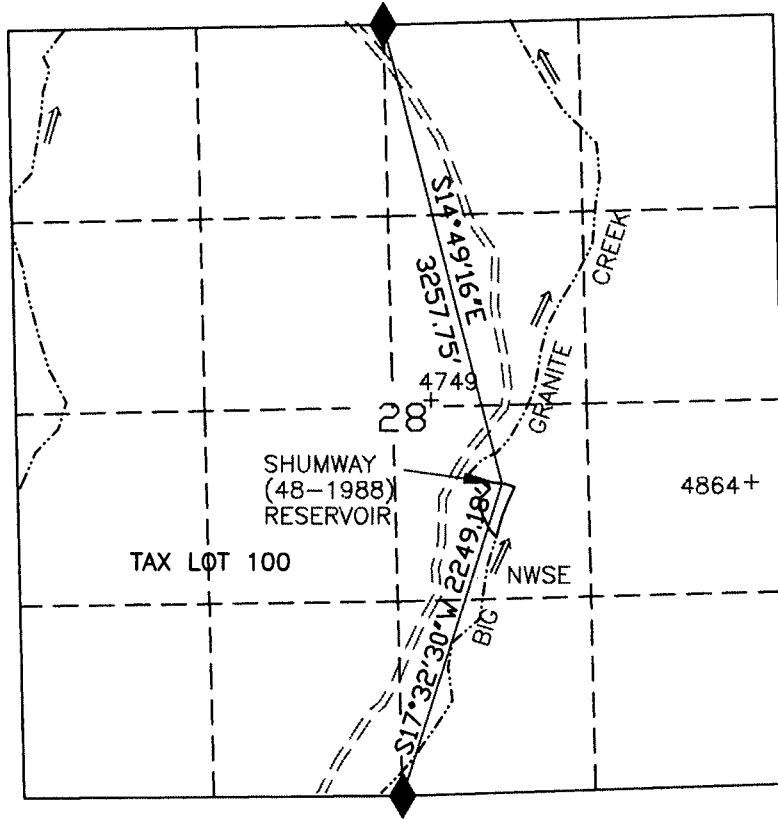
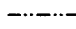


WATER RIGHTS MAP FOR LOCATION CHANGE

NW1/4 SE1/4 SEC 28 T 23S R 39E W.M.

U.S.G.S. QUAD - SHUMWAY RESERVOIR, OREG. - 7 1/2'



- LEGEND**
-  RESERVOIR
 -  ROAD
 -  CHANNEL
 -  FD SEC COR
 -  4864+ ELEVATION



RECEIVED
DEC 04 2002

SHUMWAY (48-1988) RESERVOIR

WATER RESOURCES DEPT.
SALEM, OREGON



SCALE 1"=1320'

THIS MAP IS FOR THE PURPOSE OF LOCATING A WATER RIGHT AND IS NOT INTENDED TO PROVIDE LEGAL DIMENSIONS FOR LOCATION OF PROPERTY BOUNDARIES.



UNITED STATES DEPARTMENT OF THE INTERIOR
BUREAU OF LAND MANAGEMENT
DIVISION OF OPERATIONS VALE DISTRICT

SHUMWAY (48-1988)
RESERVOIR

DESIGNED _____
 REVIEWED *Jan B. Hall*
 APPROVED *Thomas J. Terry*
CHIEF, BRANCH OF ENGINEERING

DRAWN: CG SCALE: 1"=1320'

DATE: 11/25/02 SHEET 1 OF 1

DRAWING NO. DR-03-9172.45-1168

ACAD20001
DWG FILE: SHUMWAY-LOC.DWG