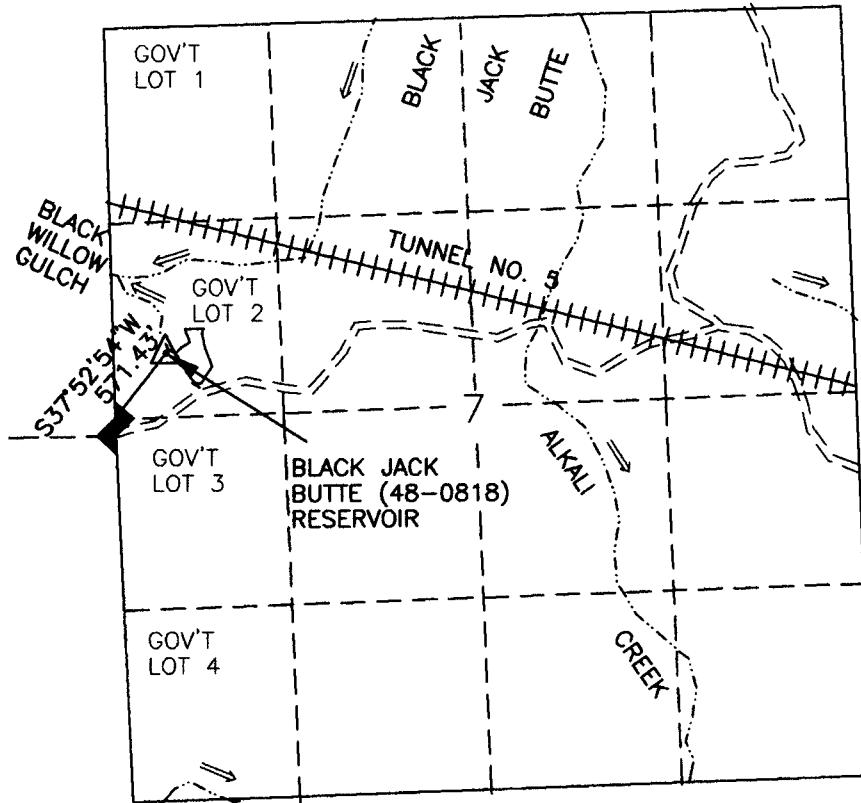


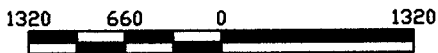
WATER RIGHTS MAP FOR LOCATION CHANGE

GOV'T LOT 2 SEC 7 T 22S R 46E W.M.
U.S.G.S. QUAD - OWYHEE DAM, OREG. - 7 1/2'



- LEGEND**
- RESERVOIR
 - ROAD
 - CHANNEL
 - FD SEC COR
 - TUNNEL
 - PROJECT MON.

BLACK JACK BUTTE (48-0818) RESERVOIR



SCALE 1"=1320'

THIS MAP IS FOR THE PURPOSE OF LOCATING A WATER RIGHT AND IS NOT INTENDED TO PROVIDE LEGAL DIMENSIONS FOR LOCATION OF PROPERTY BOUNDARIES.



UNITED STATES DEPARTMENT OF THE INTERIOR BUREAU OF LAND MANAGEMENT DIVISION OF OPERATIONS VALE DISTRICT	
BLACK JACK BUTTE (48-0818)	
DESIGNED	<i>Long S. Hall</i>
REVIEWED	<i>Thomas Messer</i>
APPROVED	<i>Thomas Messer</i> <small>CHIEF, BRANCH OF ENGINEERING</small>
DRAWN: CG	SCALE: 1"=1320'
DATE: 11/06/02	SHEET 1 OF 1
DRAWING NO. OR-03-9172.45-1157	

ACAD2000!
DWG FILE: BLACKJACK-LOC-CHG

RECEIVED

DEC 09 2002

WATER RESOURCES DEPT.
SALEM, OREGON