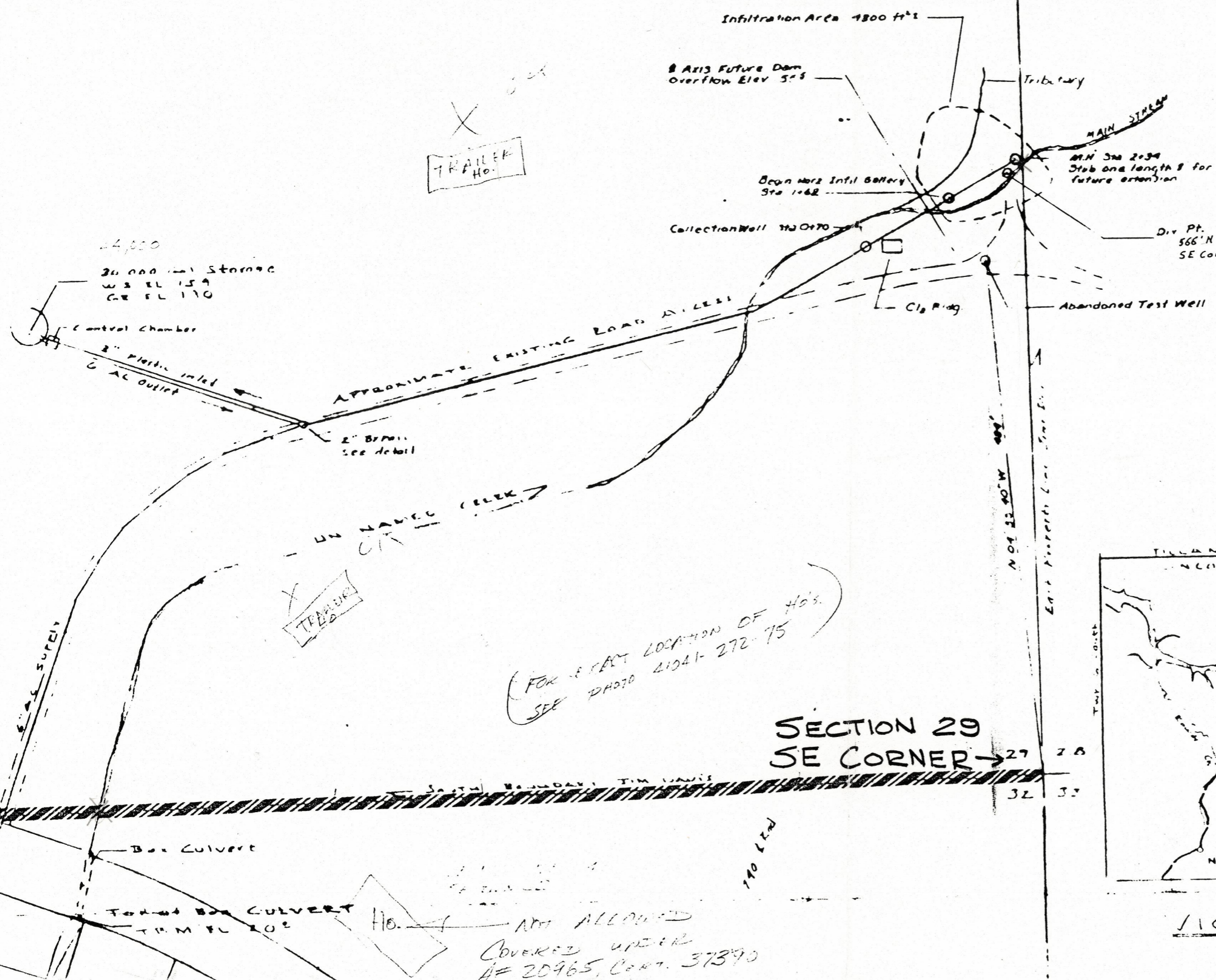


RECEIVED

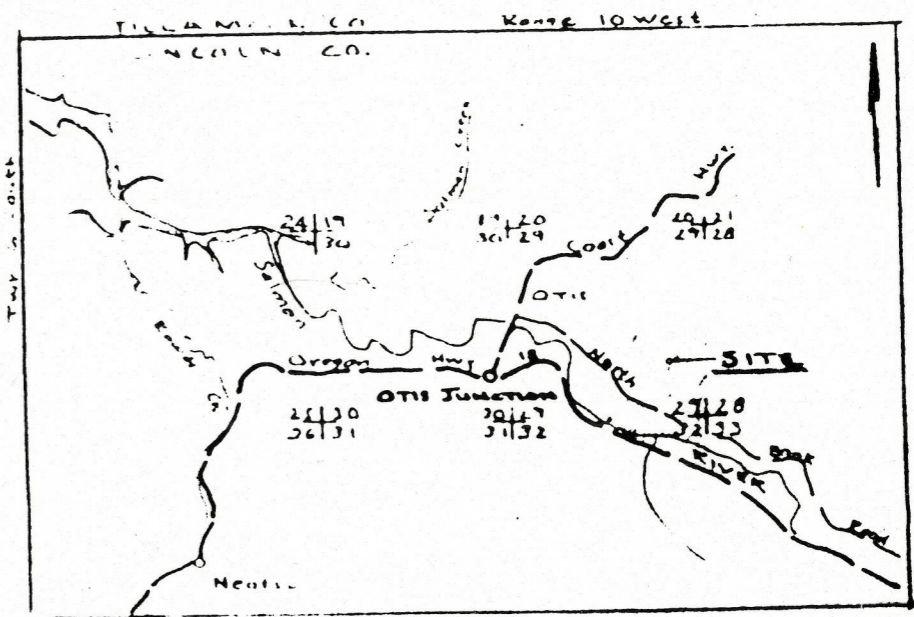
NOV 20 1985  
WATER RESOURCES DEPT.  
SALEM, OREGON

TOWNSHIP 6 SOUTH, RANGE 10 WEST, WM

SCALE 1"=100'  
POINT OF DIVERSION  
ONLY



Application No. 68617  
Permit No. 49582



VICINITY MAP  
No scale

TRAILER HO.

TRAILER HO.

FOR EXACT LOCATION OF HO'S.  
SEE PHOTO 41041-272-75

SECTION 29  
SE CORNER →

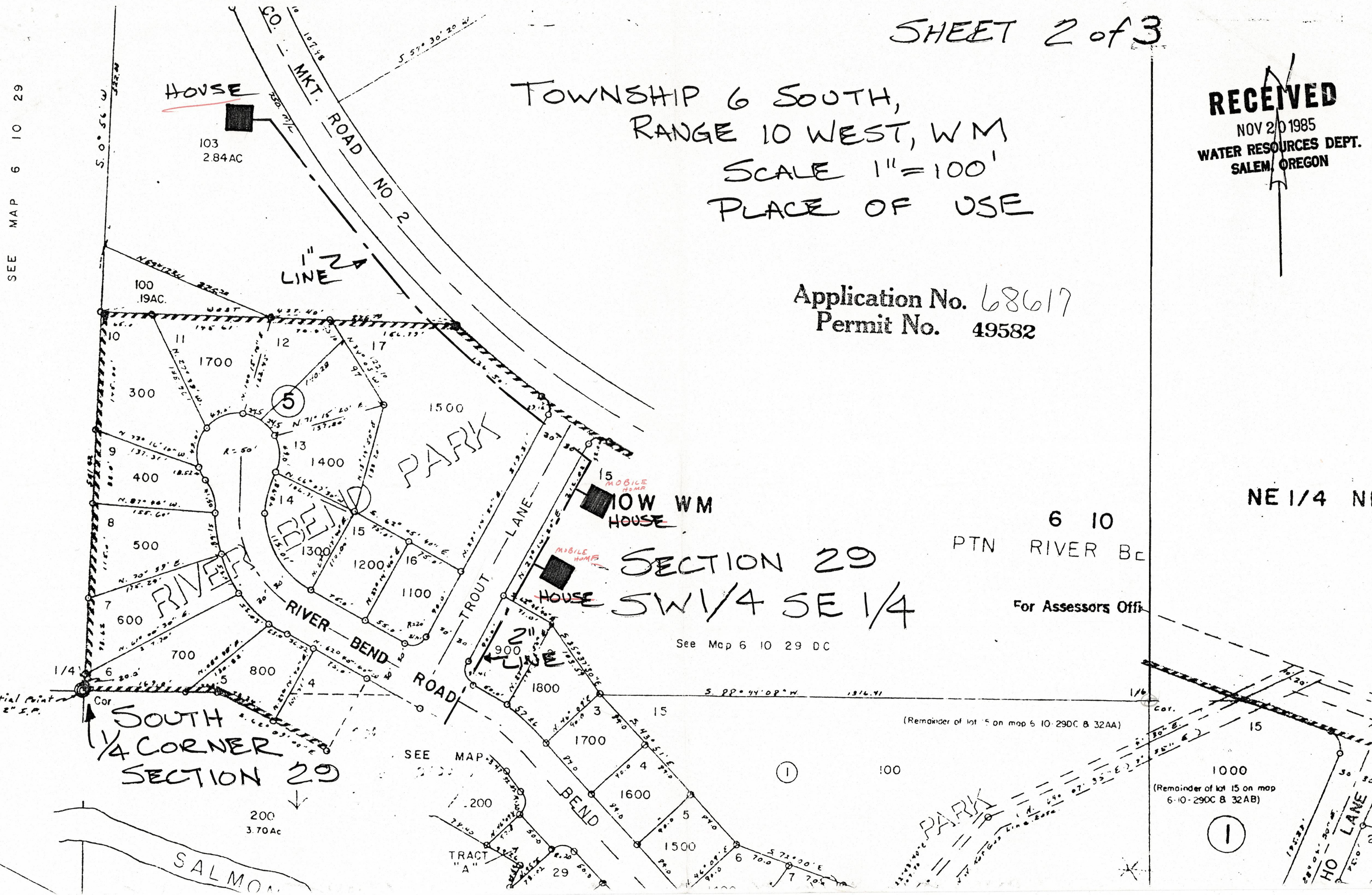
NOT ALLOWED  
COVERED UNDER  
# 20965, Cert. 37390

TOWNSHIP 6 SOUTH,  
RANGE 10 WEST, WM  
SCALE 1" = 100'  
PLACE OF USE

RECEIVED  
NOV 20 1985  
WATER RESOURCES DEPT.  
SALEM, OREGON

Application No. 68617  
Permit No. 49582

SEE MAP 6 10 29



SECTION 29  
SW 1/4 SE 1/4

6 10  
PTN RIVER Bc  
For Assessors Offi

NE 1/4 NI

See Map 6 10 29 DC

(Remainder of lot 15 on map 6 10 29DC B 32AA)

(Remainder of lot 15 on map 6-10-29DC B 32AB)

SOUTH  
1/4 CORNER  
SECTION 29

SALMON

TRACT  
"A"

HO LANE

NE 1/4 NE 1/4 SECTION 32 T6S R10W WM

Assessor's Office Use Only 6 10 32 A A

LINCOLN COUNTY

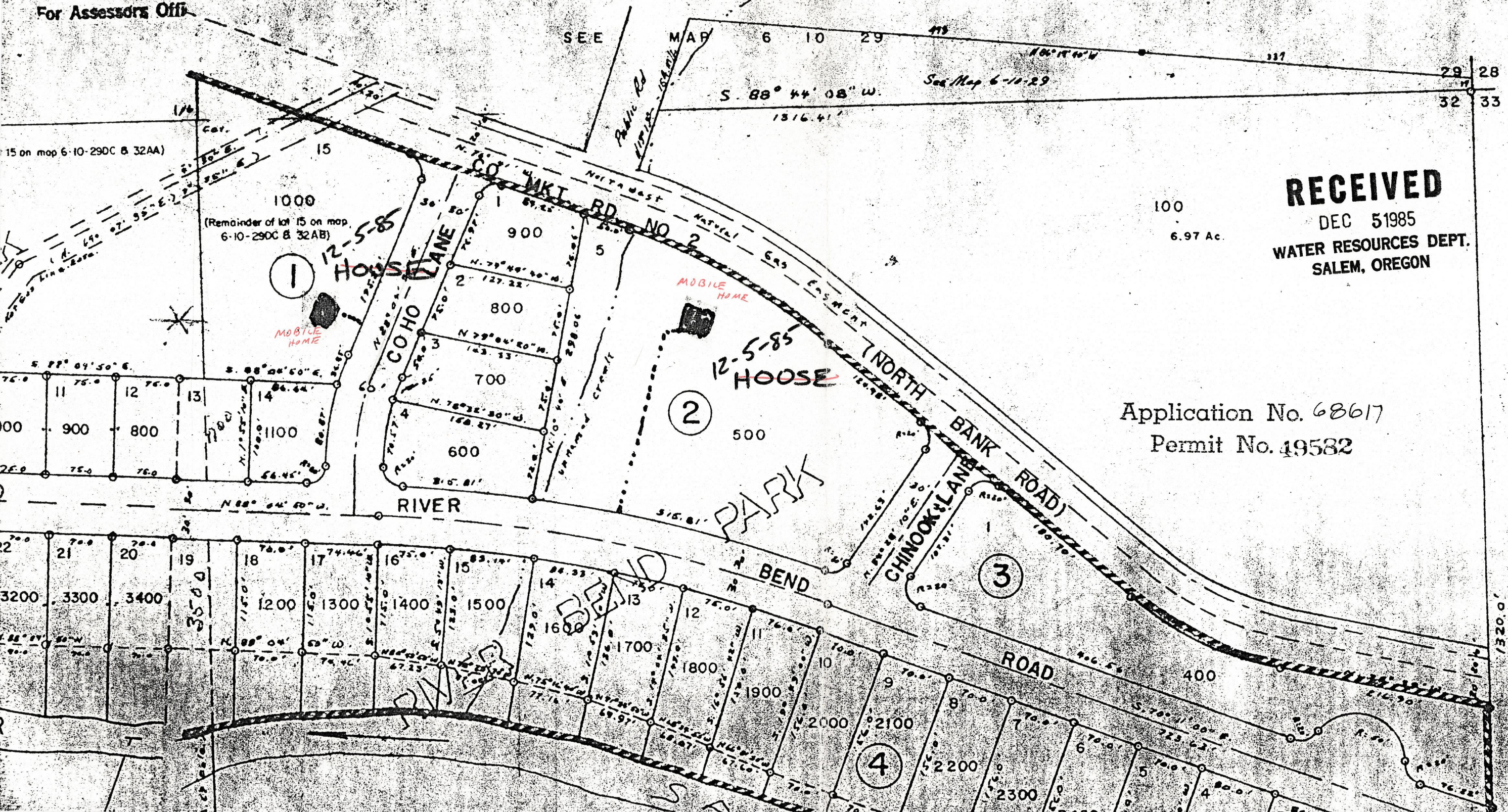
PTN. RIVER BEND PARK

SCALE - 1" = 100'

6 10 RIVER BE

For Assessor's Office

DEAD 302 303



RECEIVED

DEC 5 1985  
WATER RESOURCES DEPT.  
SALEM, OREGON

Application No. 68617  
Permit No. 49582

MAP 6 10 33