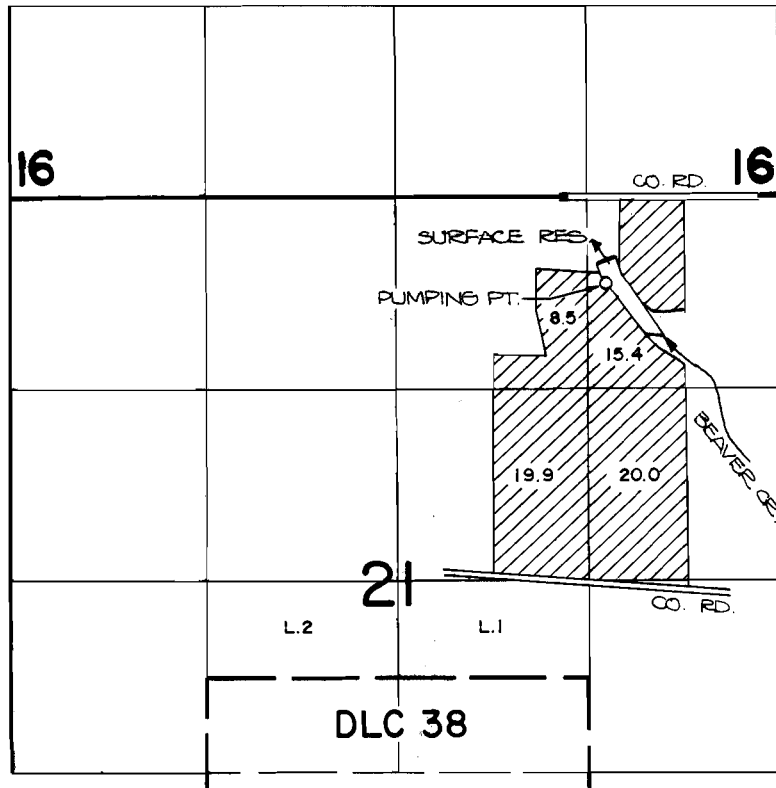


T. 1 S., R. 4 E., W. M.



DAM LOCATION: 450 FT. S. AND 1200 FT. E. FROM THE N.E. CORNER OF SECTION 21.

FINAL PROOF SURVEY UNDER



R-56139 R-6630
 Application No. 56140 Permit No. 41956
 IN NAME OF

SCALE: 4" = 1 MILE

..... RICHARD SURFACE

Surveyed MAY. 1, 1984., by *P. Patten*