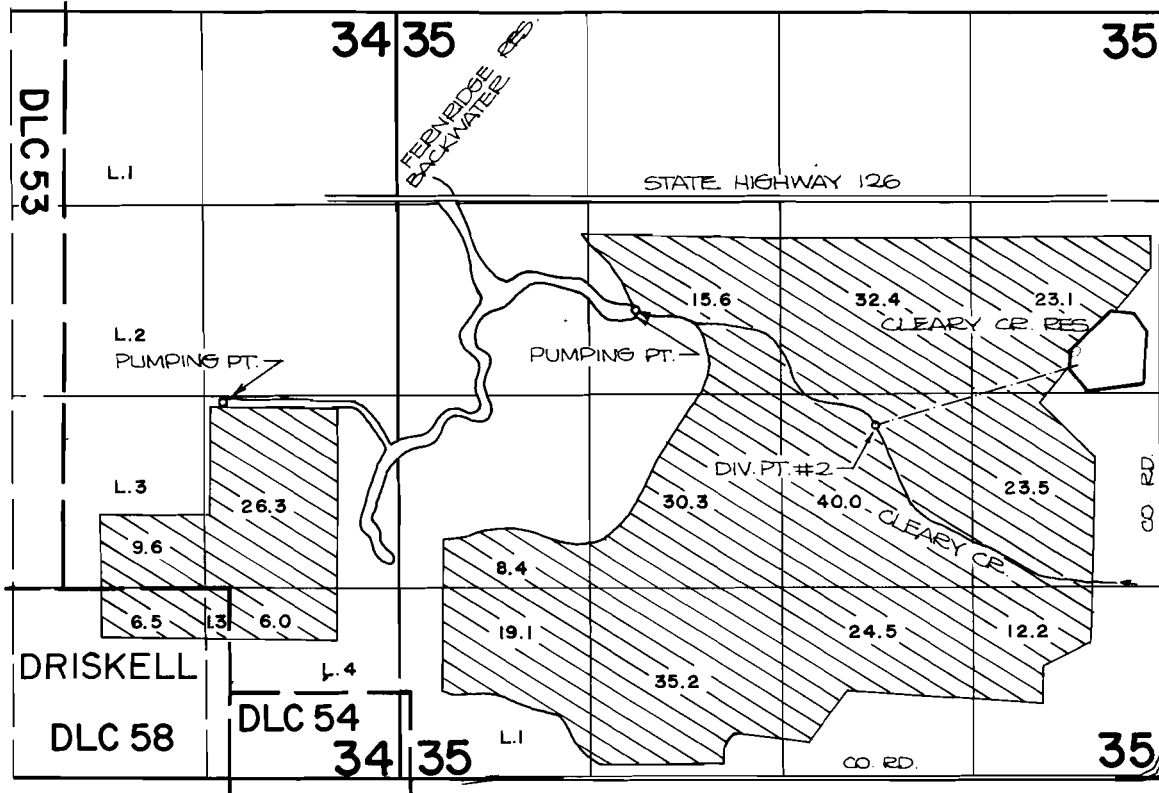


T.17S., R.5W., W. M.



DIV. PT. #1 LOCATION (FERN RIDGE RES): N.E. 1/4 S.W. 1/4 OF SECTION 4, T. 17S., R. 5W., W.M.
 DIV. PT. # 2 LOCATION: 2430 FT. N. AND 1960 FT. W. FROM THE S. E. CORNER OF SECTION 35.

FINAL PROOF SURVEY UNDER

R-58594 R-8548
 Application No. 58595... Permit No. 47242.....
 IN NAME OF

SCALE: 4" = 1 MILE

OREGON DEPT. OF FISH & WILDLIFE

Surveyed MAY 7, 1984, by *P. Pagten*

