

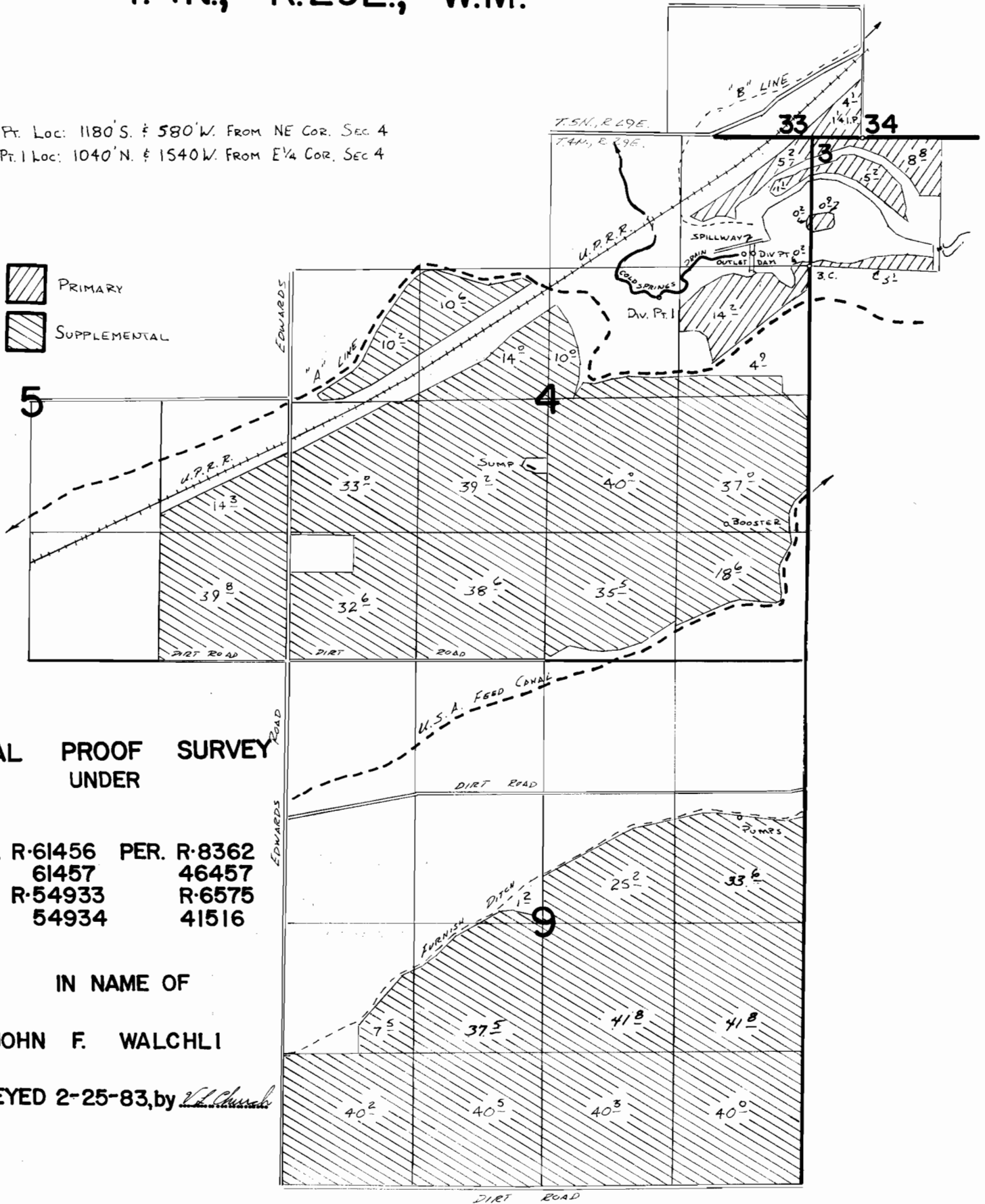


T.4N., R.29E., W.M.

Div. Pt. Loc: 1180'S. & 580'W. FROM NE COR. SEC 4
 Div. Pt. 1 Loc: 1040'N. & 1540'W. FROM E 1/4 COR. SEC 4

 PRIMARY
 SUPPLEMENTAL



FINAL PROOF SURVEY UNDER

APPL. R-61456 PER. R-8362
 61457 46457
 R-54933 R-6575
 54934 41516

IN NAME OF

JOHN F. WALCHLI

SURVEYED 2-25-83, by *[Signature]*