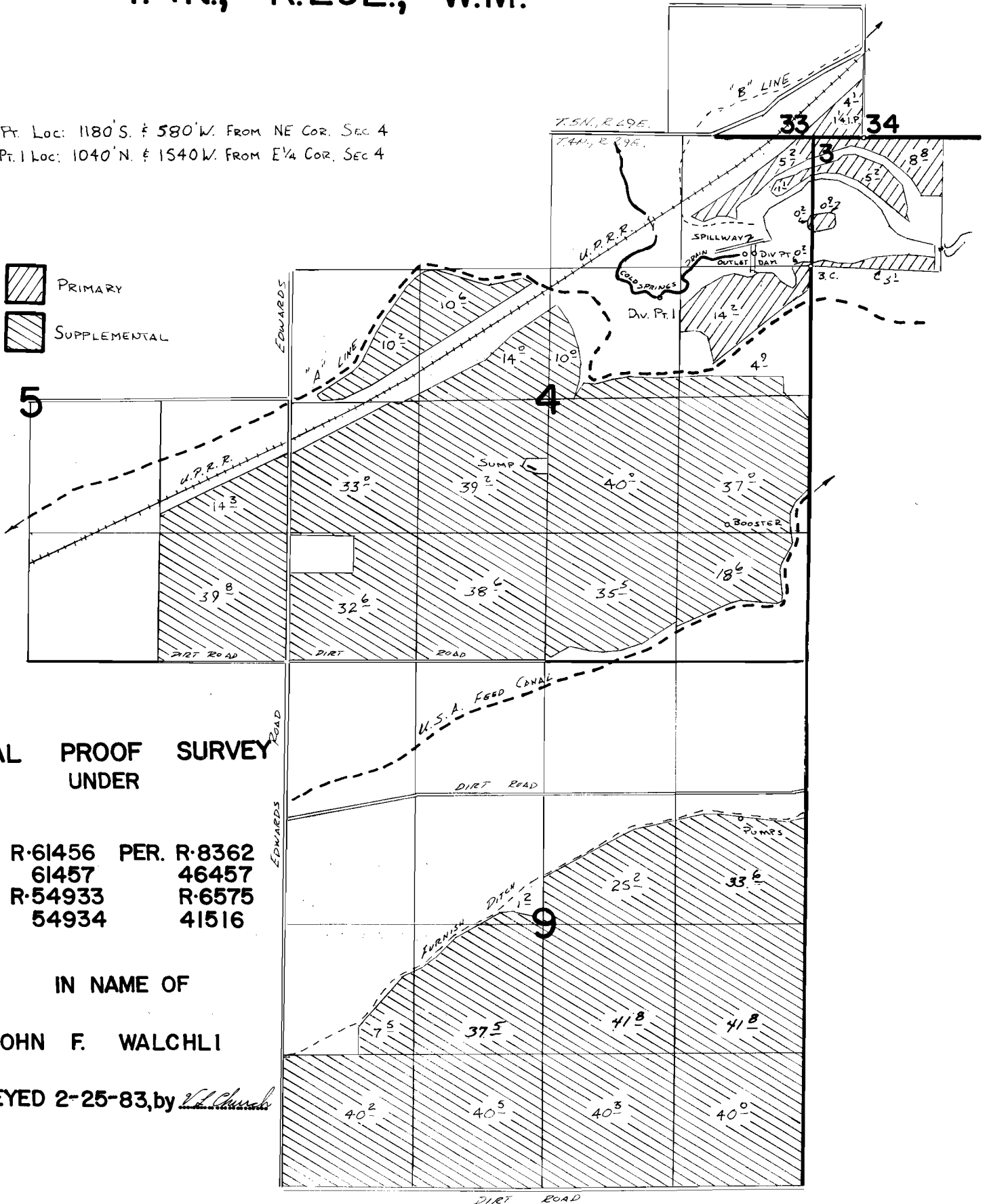
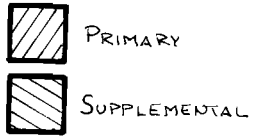


# T.4N., R.29E., W.M.

Div. Pt. Loc: 1180'S. & 580'W. FROM NE COR. SEC 4  
 Div. Pt. 1 Loc: 1040'N. & 1540'W. FROM E 1/4 COR. SEC 4



**FINAL PROOF SURVEY UNDER**

APPL. R-61456 PER. R-8362  
 61457 46457  
 R-54933 R-6575  
 54934 41516

IN NAME OF

JOHN F. WALCHLI

SURVEYED 2-25-83, by *[Signature]*