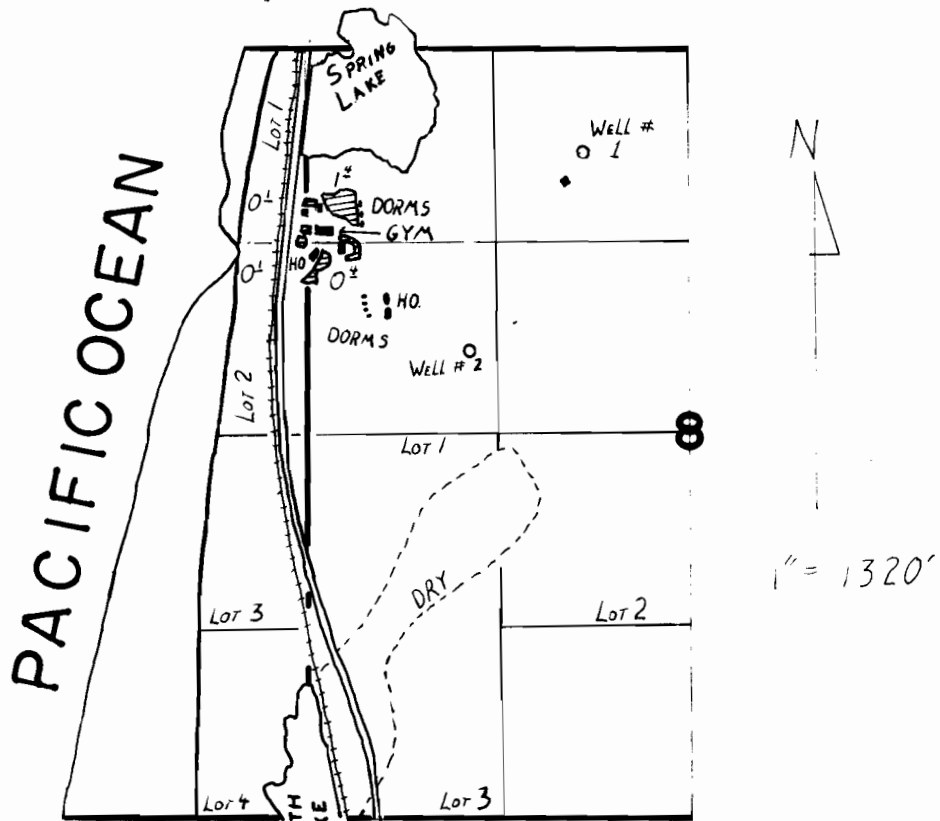


# T. I. N. R. I. O. W. W. M.



WELL LOCATIONS:  
 #1 700' S & 1100' E #2 2070' S & 1100' E  
 FROM THE NW CORNER OF SECTION 8

## FINAL PROOF SURVEY UNDER

Application No. G.8854 Permit No. G.8211  
 IN NAME OF

TWIN ROCKS FRIENDS CONFERENCE ASSOCIATION

Surveyed SEPT. 9, 1987, by T.M. WARREN