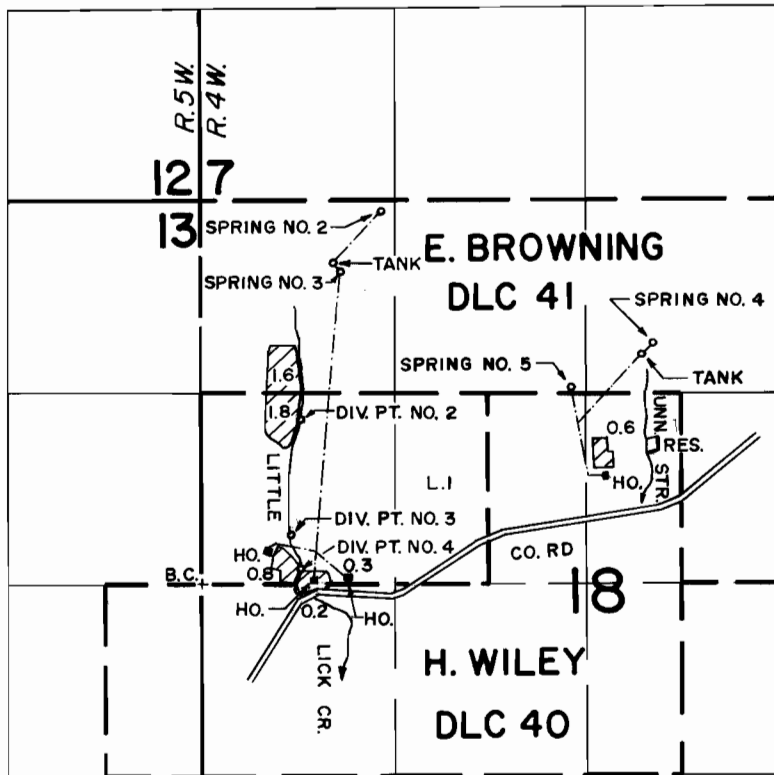


T.29S., R.4&5W., W.M.



DIV. PT. #2 LOC.: 1500 FT. S. AND 680 FT. E.; DIV. PT. #3 LOC.: 2300 FT. S. AND 620 FT. E.; DIV. PT. #4 LOC.: 2530 FT. S. AND 660 FT. E.; SPRING #2 LOC.: 60 FT. S. AND 1240 FT. E.; SPRING #3 LOC.: 490 FT. S. AND 960 FT. E.; SPRING #4 LOC.: 980 FT. S. AND 3110 FT. E.; SPRING #5 LOC.: 1290 FT. S. AND 2560 FT. E.; STREAM & RESERVOIR - 1750 FT. S. AND 3050 FT. E.; ALL FROM NW CORNER SECTION 18.

FINAL PROOF SURVEY
UNDER

R-58438 R-7816
Application No. 58439.. Permit No. 44075.....
IN NAME OF

LAVINA P. ARWOOD

Surveyed MAY 14, 1984, by L. CASHION.....

SCALE: 4" = 1 MILE