

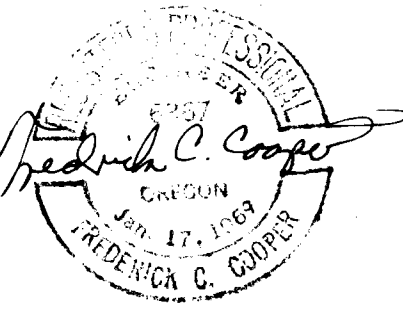
POND DESIGN DATA

MAX. W.S. ELEV. 2778
 MIN. W.S. ELEV. 2761.5
 SURFACE AREA @ ELEV. 2778 = 34 ACRES
 VOL. @ ELEV. 2778 = 317,456 FEET
 TOTAL STORAGE VOL. = 360,000 FEET
 VOL. EL. 2778 TO OVERFLOW = 43 ACRES FEET
 TOP OF DIKE EL. 2779.3 (LOWEST ELEV.)

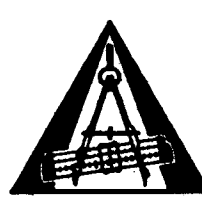
EXISTING CONTOURS ———
 NEW CONTOURS ———

PHOTO CONTROLS
 244,746.37
 E 1,810,220.11

RECEIVED
 JAN 13 1992
 WATER RESOURCES DEPT.
 SALLM, OREGON



NO.	REVISION	BY	DATE	NO.	REVISION	BY	DATE
0	REVISE HOLDING POND CONTOURS TO REFLECT SHAPE & DEPTH, AND REVISE POND DESIGN DATA	JPC	12/29/91				



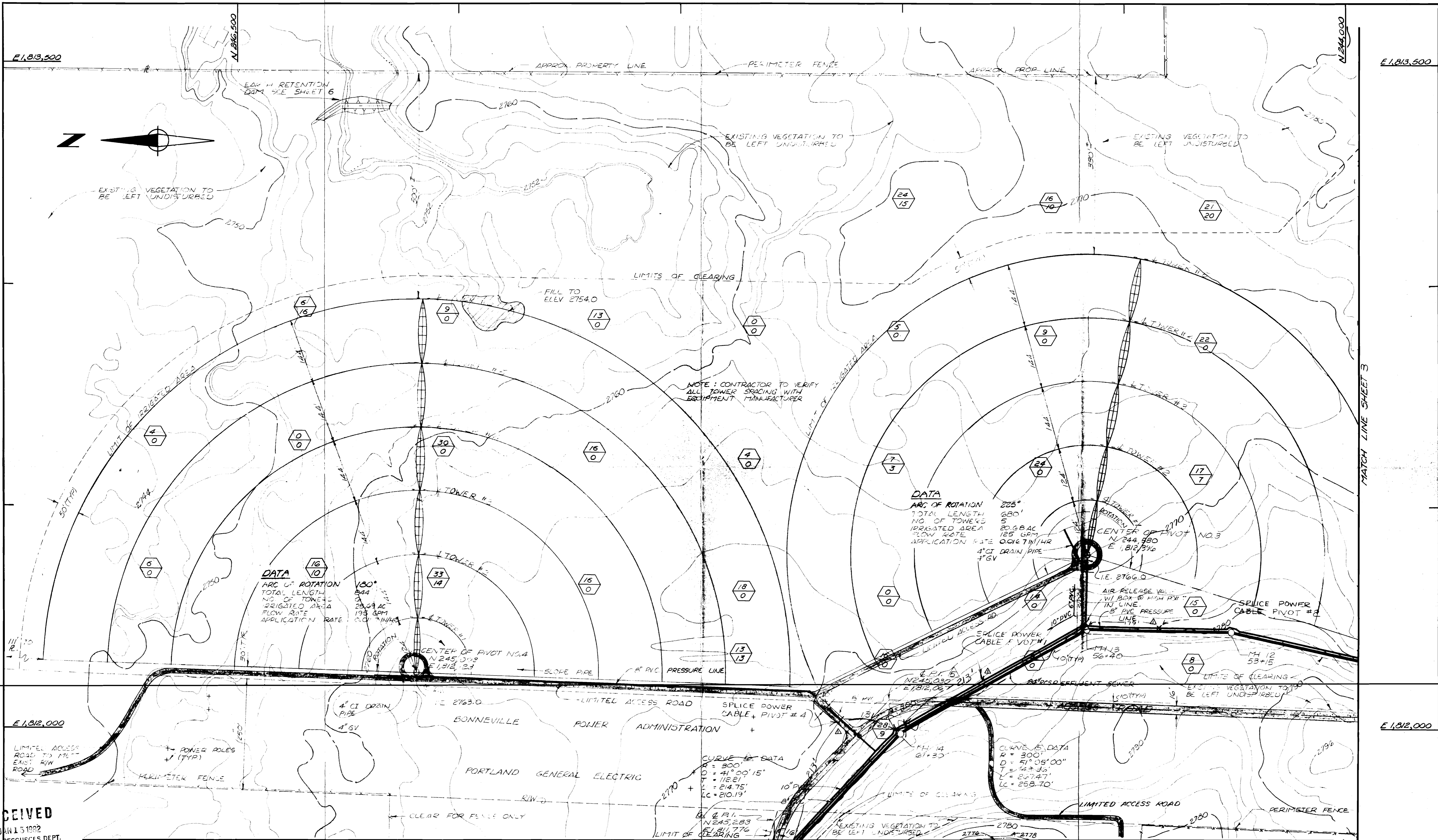
ROBERT E. MEYER ENGINEERS INC.
 1428 S.W. ALLEN BOULEVARD
 BEND, OREGON 97005
 PHONE 1800 443-7531

SANITARY SEWERAGE PROJECT
 CITY OF REDMOND
 REDMOND, OREGON

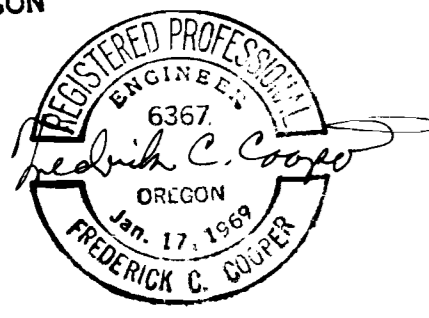
HOLDING POND SITE PLAN

DESIGN: FCC, VLR DRAWN: J. RFS CHECKED: FCC APPROVED: ZHK
 SCALE: 1" = 100' DATE: DEC., 1976

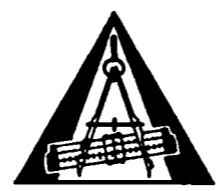
5
 26
 FILE
 1116-02
 4210



RECEIVED
 JAN 15 1992
 WATER RESOURCES DEPT.
 SALEM, OREGON



NO.	REVISION	BY	DATE	NO.	REVISION	BY	DATE
	1			1	RECORD DRAWINGS	PKM	3/27/81
	2			2	REVISE HOLDING POND CONTOURS TO REFLECT SHAPE & DEPTH	JPC	12/29/81



ROBERT E. MEYER ENGINEERS INC.
 14250 S.W. ALLEN BOULEVARD
 BEAVERTON, OREGON 97005
 PHONE (503) 643-7531

SANITARY SEWERAGE PROJECT
 CITY OF REDMOND
 REDMOND, OREGON

CENTER PIVOTS NO. 3 & 4
 SITE PLAN

DESIGN: FCC DRAWN: J.B., RFG CHECKED: FCC APPROVED: AHK SCALE: 1" = 100' DATE: DEC., 1976

4
 26
 FILE
 1116-02
 4209