

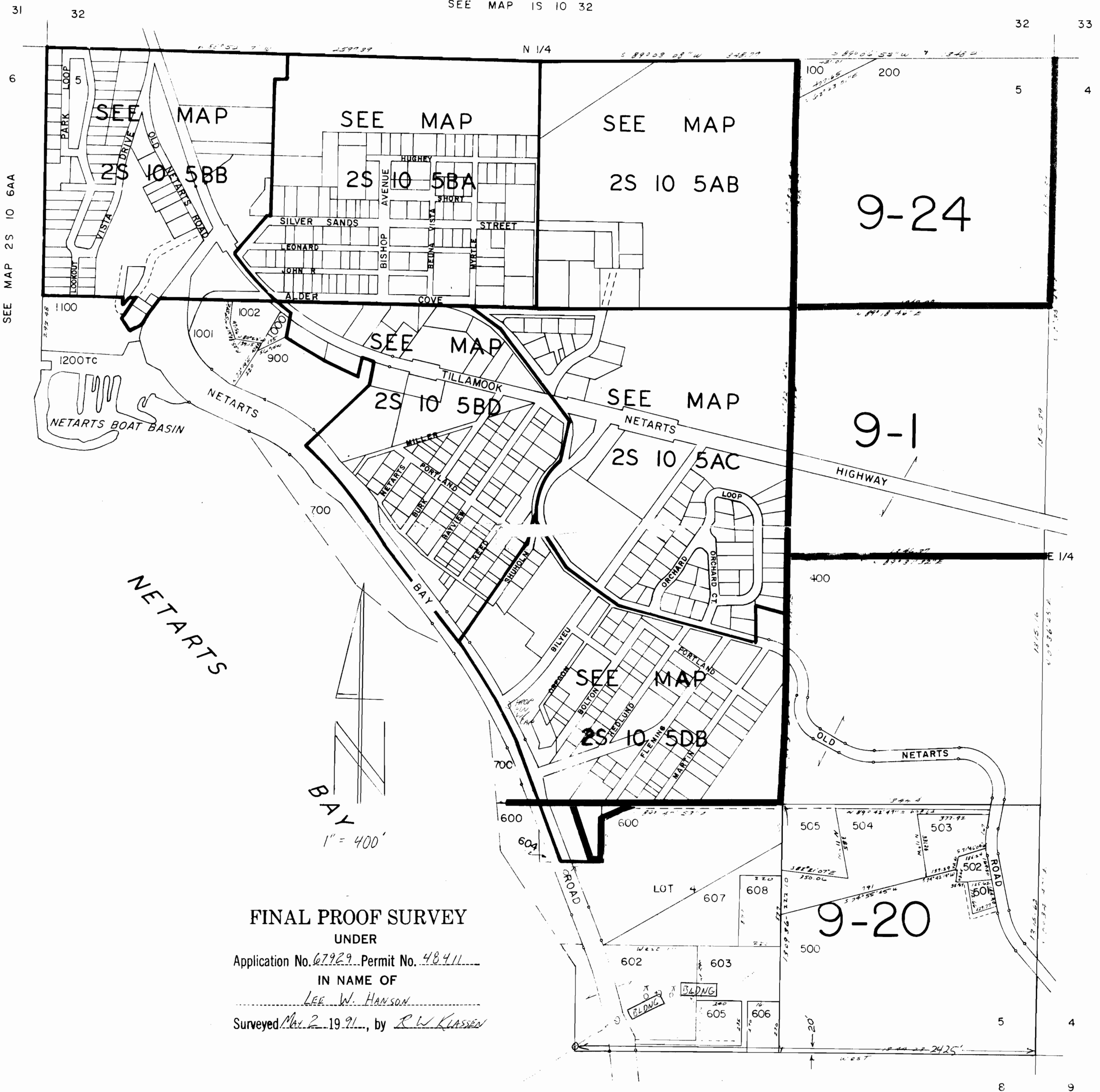
SECTION 5 T.2S. R.10W. W.M.
TILLAMOOK COUNTY

2S 10 5
& INDEX

This map was prepared for
assessment purpose only.

1"=400'

SEE MAP 1S 10 32



CANCELLED
601
300
800

SEE MAP 2S 10

FINAL PROOF SURVEY
UNDER

Application No. 67929...Permit No. 48411

IN NAME OF

LEE W. HANSON

Surveyed Mar 2 1991, by R.W. KLASSEN

SEE MAP 2S 10 8

2S 10 5