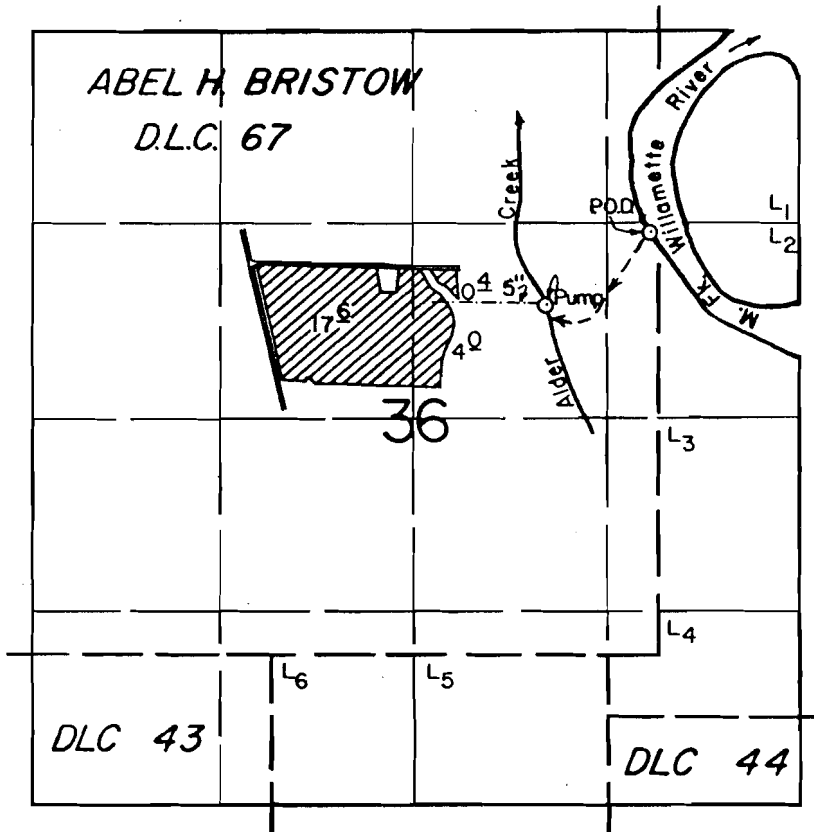




T. 18 S., R. 2 W., W.M.



DIV. PT. LOC: 2880' N & 50' W. FROM SE. CORNER ABEL H. BRISTOW DLC. 67

SCALE: 1" = 1320'

FINAL PROOF SURVEY
UNDER

Application No. 61021... Permit No. 45702...
IN NAME OF

.....**RUSS McMARTIN**.....

Surveyed OCT. 15... 1986.. by T. WARREN.....

RECEIVED

JUN 15 2000

WATER RESOURCES DEPT.
SALEM, OREGON