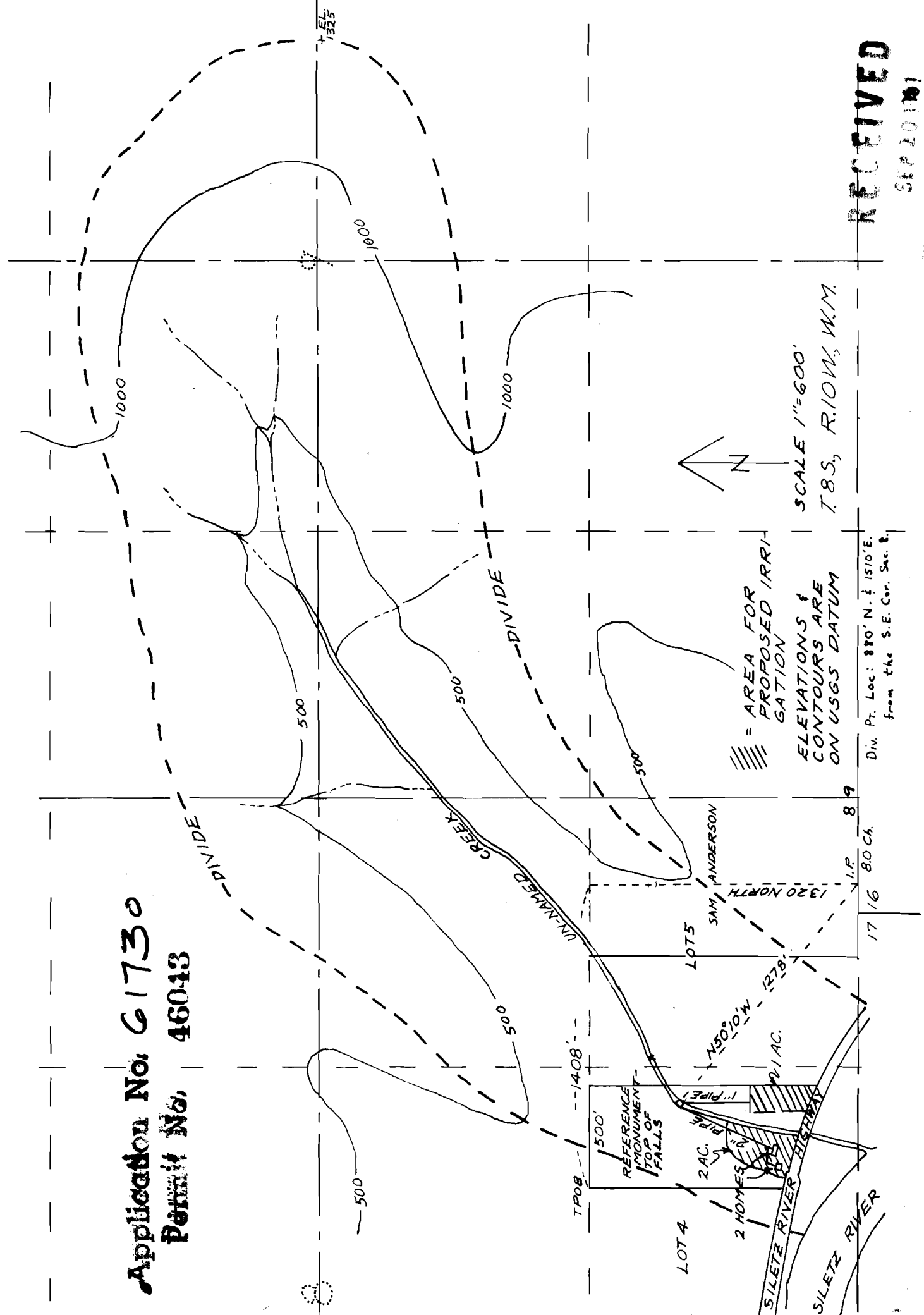
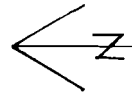


Application No. 61730
 Permit No. 46043



/// = AREA FOR PROPOSED IRRIGATION
 ELEVATIONS & CONTOURS ARE ON USGS DATUM



SCALE 1"=600'
 T.8S., R.10W., W.M.

Div. Pt. Loc: 870' N. & 1510' E.
 from the S.E. Cor. Sec. 8.

17 16 80 Ch. 89

LOT 4
 2 HOMES
 2 AC.

LOT 5
 SAM ANDERSON

REFERENCE MONUMENT - TOP OF FALLS
 500'

150° 0' W - 1278'

1408'

RECEIVED

SEP 20 1967

WATER RESOURCES DEPT
 SALEM, OREGON