

RECEIVED

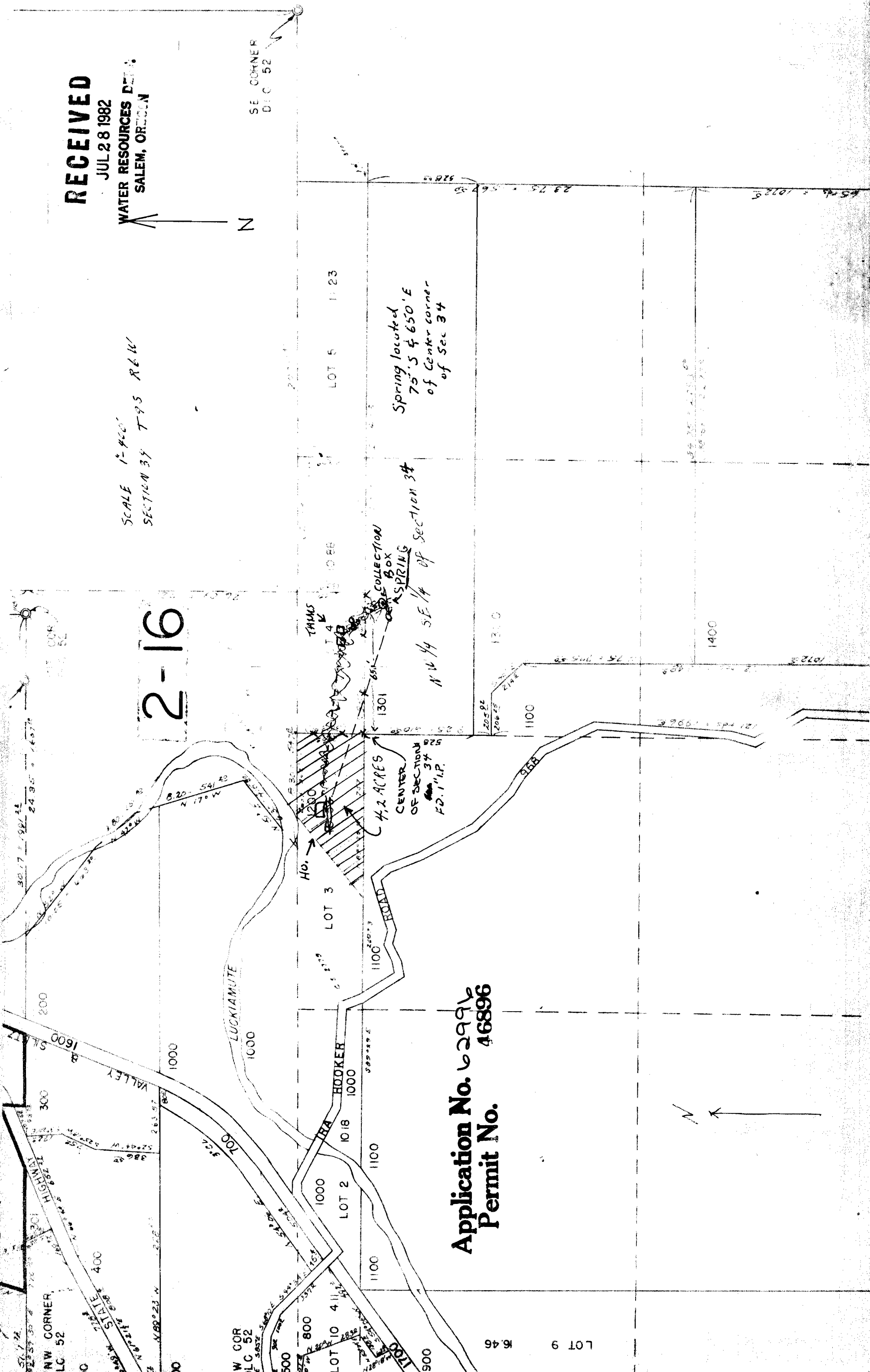
JUL 28 1982

WATER RESOURCES DIV.
SALEM, OREGON

SCALE 1"=400'
SECTION 34 T9S R6W

SE CORNER
D1C 52

2-16



Application No. 6299
Permit No. 46896

NW CORNER
D1C 52

LOT 9 6.46

SEE MAP 9 6 35