

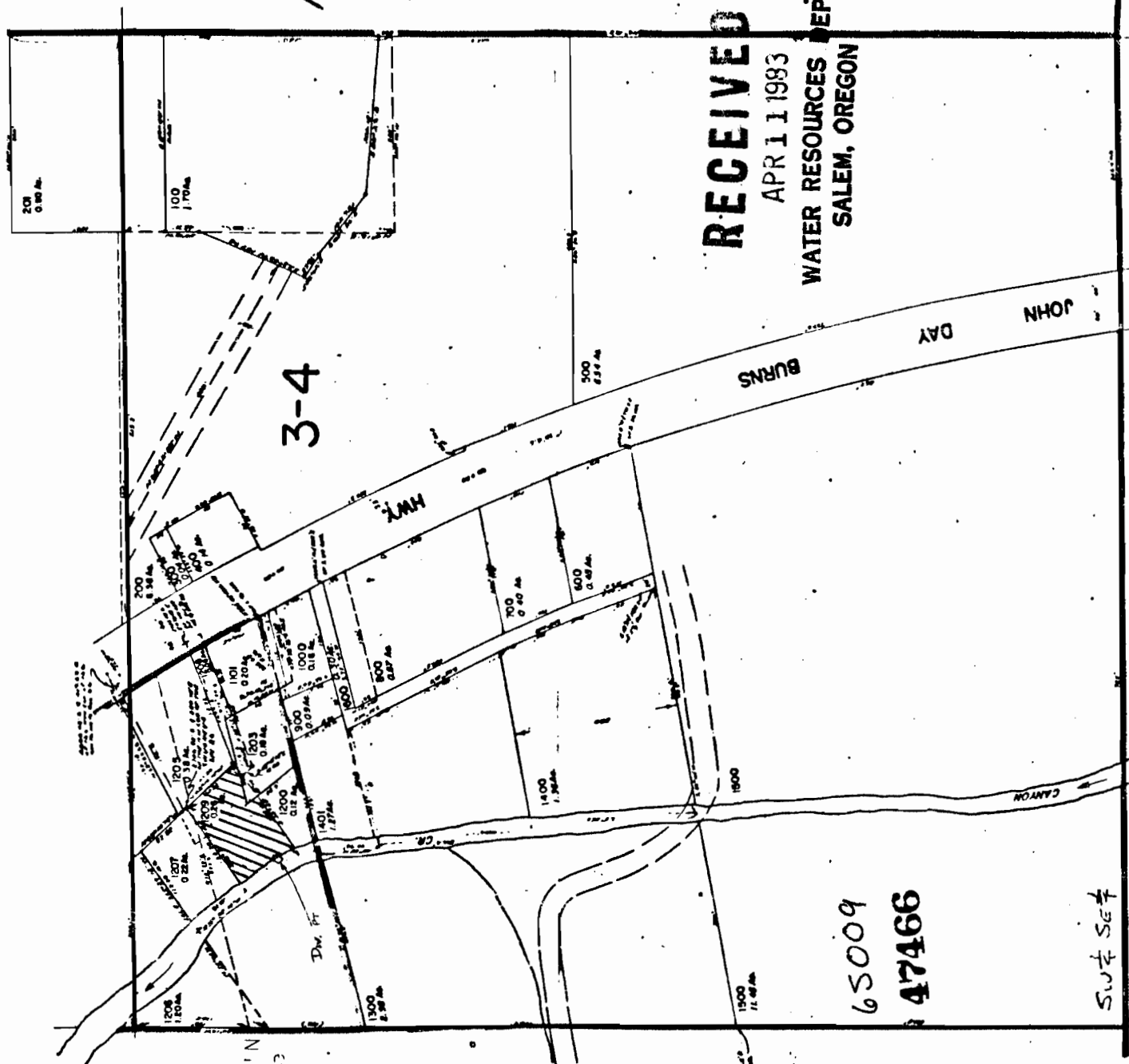
JOHN DAY

SW 1/4 SE 1/4 SEC. 26 T.13 S. R.31 E. W.M.

GRANT COUNTY

1" = 200 feet

Diversion is 1110' N and 225' E from the S 1/4 corner of Sec. 26.



RECEIVED
 APR 11 1983
 WATER RESOURCES DEPT.
 SALEM, OREGON

65009
 47466

Application No.
 Permit No.

SW 1/4 SE 1/4

S 1/4 CORNER - SEC. 26