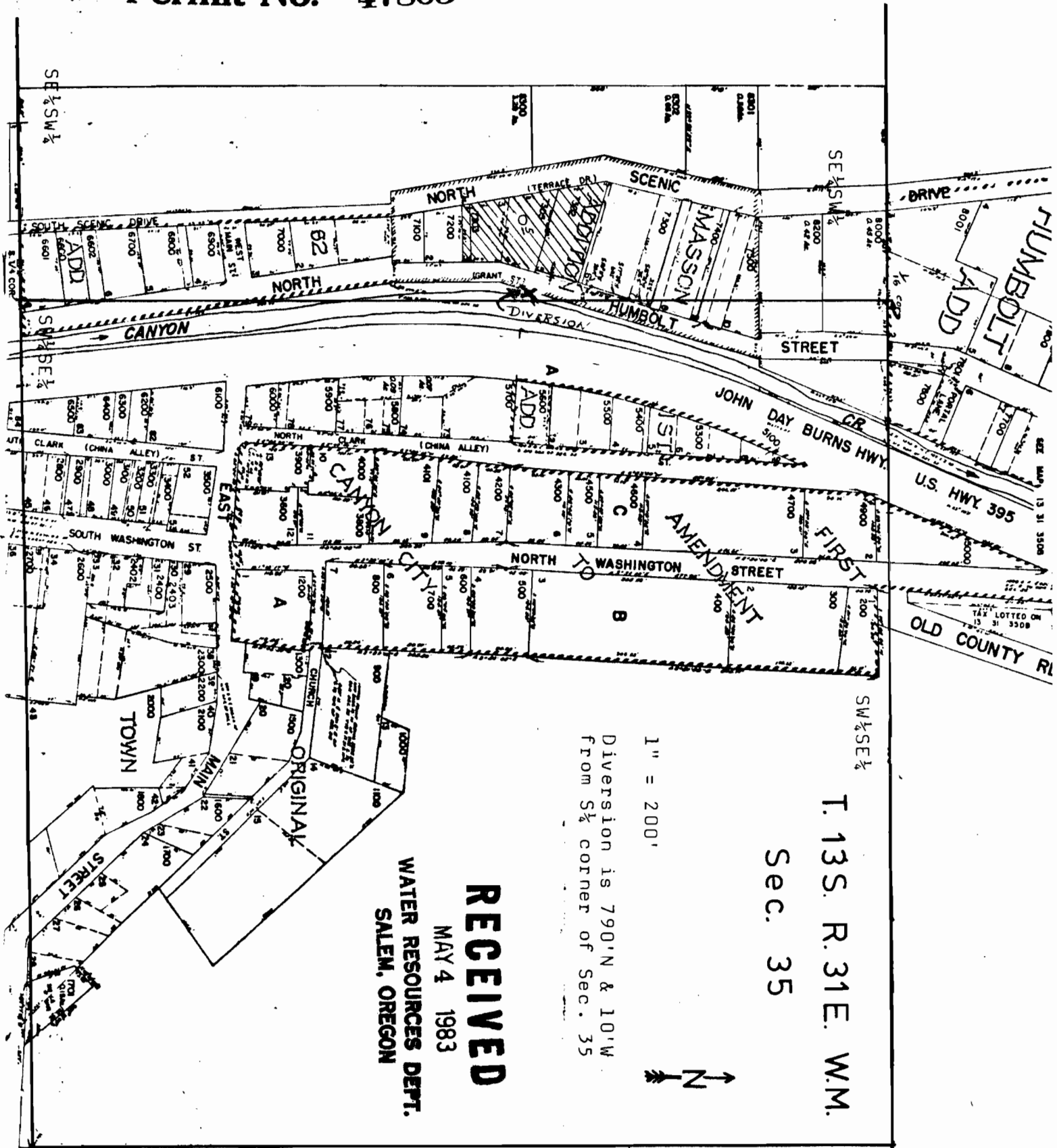


Application No. 65068  
Permit No. 47803



SW 1/4 SE 1/4

T. 13S. R. 31E. W.M.

Sec. 35

1" = 200'

Diversion is 790' N & 10' W  
from S 1/4 corner of Sec. 35



**RECEIVED**

MAY 4 1983

WATER RESOURCES DEPT.  
SALEM, OREGON