

SW 1/4 NE 1/4 SECTION 32 T13S R10W WM
LINCOLN COUNTY

1" = 100'

See Map 13 10 32

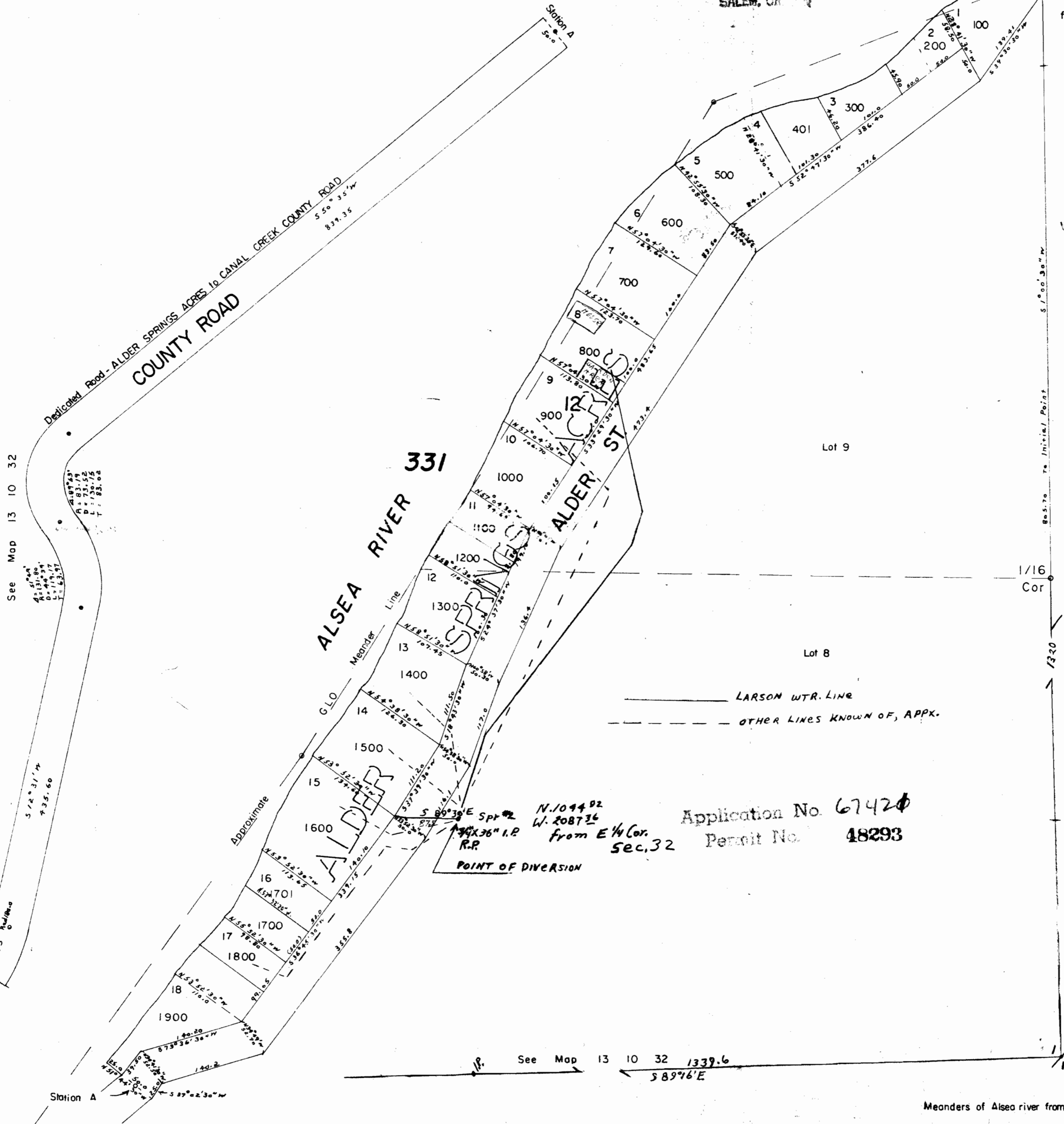
13 10 32 AC
ALDER SPRINGS ACRES

RECEIVED
OCT 6 1983
WATER RESOURCES DEPT.
SALEM, OREGON

Initial Point
N 89° 16' W 1339.6' &
N 1° 00' 30" E 2125.7'
from E 1/4 Cor. Sec. 32

DEAD NO.
201
400

RECEIVED
JAN 12 1984
WATER RESOURCES DEPT.
SALEM, OREGON



See Map 13 10 32

See Map 13 10 32

See Map 13 10 32

See Map 13 10 32 1339.6
S 89° 16' E

Application No. 67420
Permit No. 48293

Meanders of Alsea river from GLO

13 10 32 AC