

SEP 30 1986

WATER RESOURCES DEPT.
SALEM, OREGON

RECEIVED

SEP 30 1986
WATER RESOURCES DEPT.
SALEM, OREGON

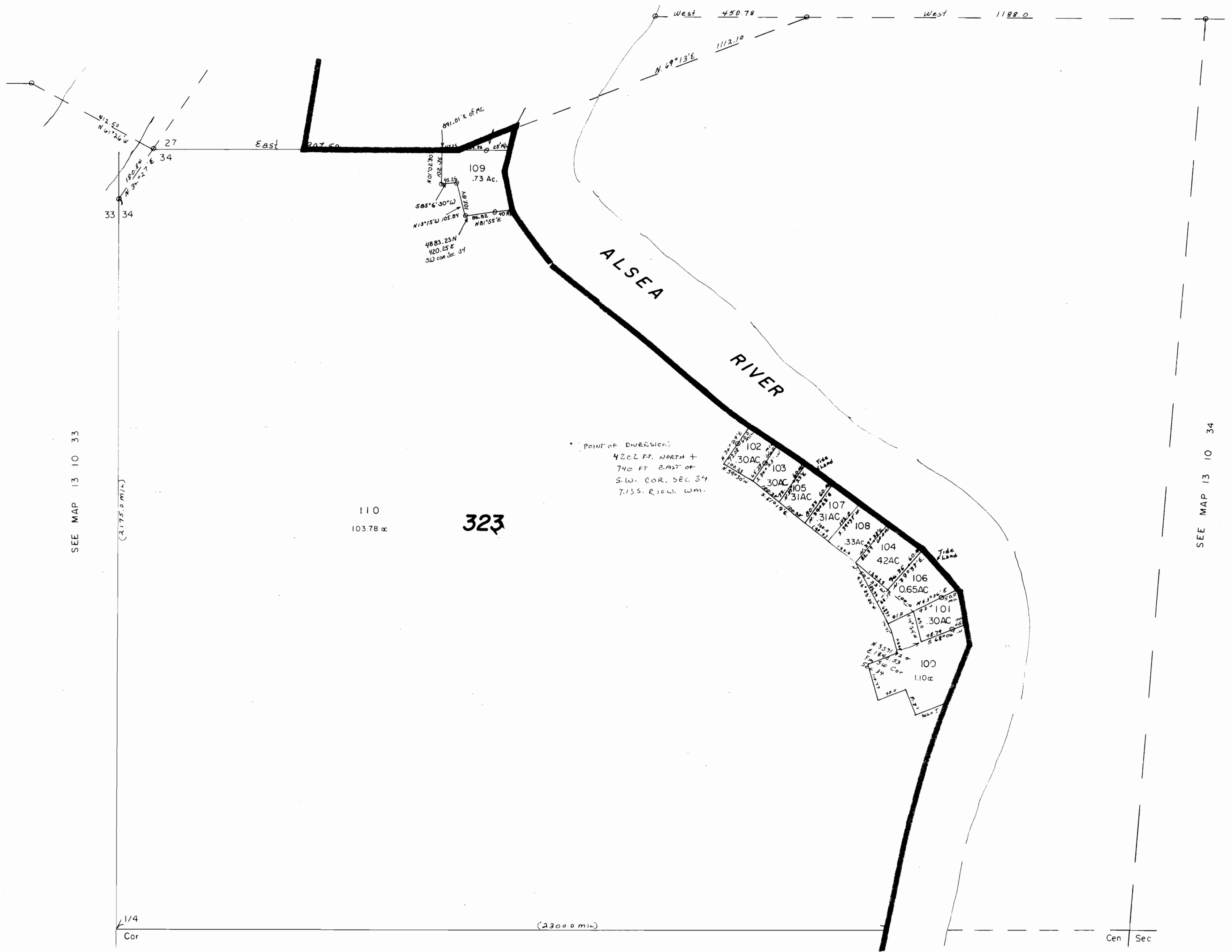
NW 1/4 SECTION 34, T.13 S.R.10W. W.M.
LINCOLN COUNTY

1" = 200'

SEE MAP 13 10 27

13 10 34 B

Application No. 68930
Permit No.



SEE MAP 13 10 33

SEE MAP 13 10 34

SEE MAP 13 10 34 C

13 10 34 B