

RECEIVED

R 8934
54185

AUG 19 1981

FIELD MAP SHEET

WATER RESOURCES DEPT

SALEM, OREGON

PREMONT

N.F.

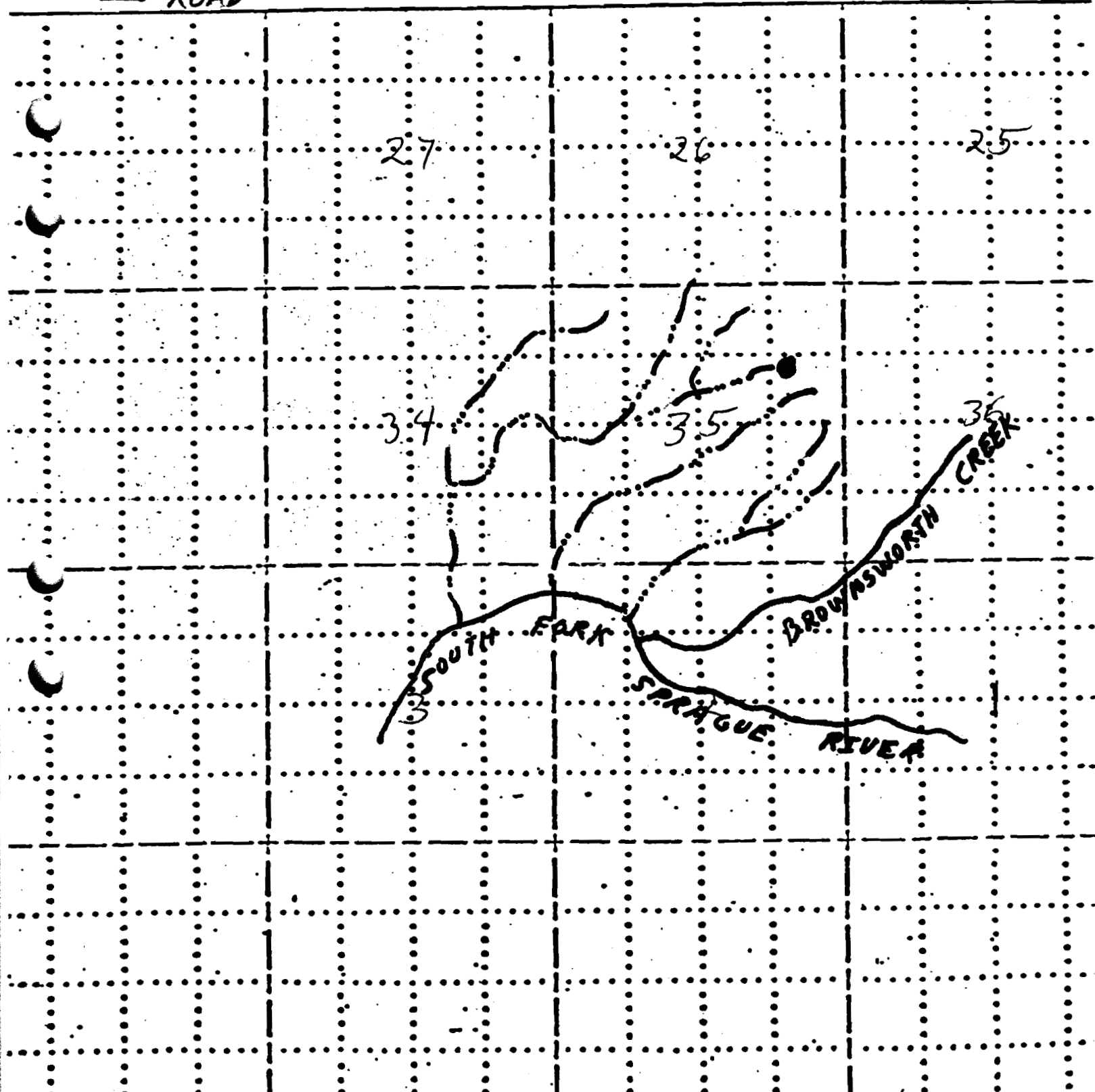
T. 365
375 R. 15E Sec. Subdiv.

Scale 2 inches = 1 Mile

Mapped by Reviewed by

● RESERVOIR Application No. R-62483 7/20, 1981

— DRAINAGE Permit No. R 8934
— ROAD



15780

R-8934

59185

RECEIVED

AUG 19 1981

WATER RESOURCES DEPT
SALEM, OREGON

hman
Flat

Application No. R-62483

Permit No. R-8934 26

Swede
Cabin

Flat
SWEDE
CABIN

36 15 35

30

34

35

36

31

5200

6

5345 X

Round
Butte

South Fork Sprague
River

Butte
Spring

5012

12

7

10

11

4800

4990 X

5000

0

US

