

R9109
59199

AUG 19 1981

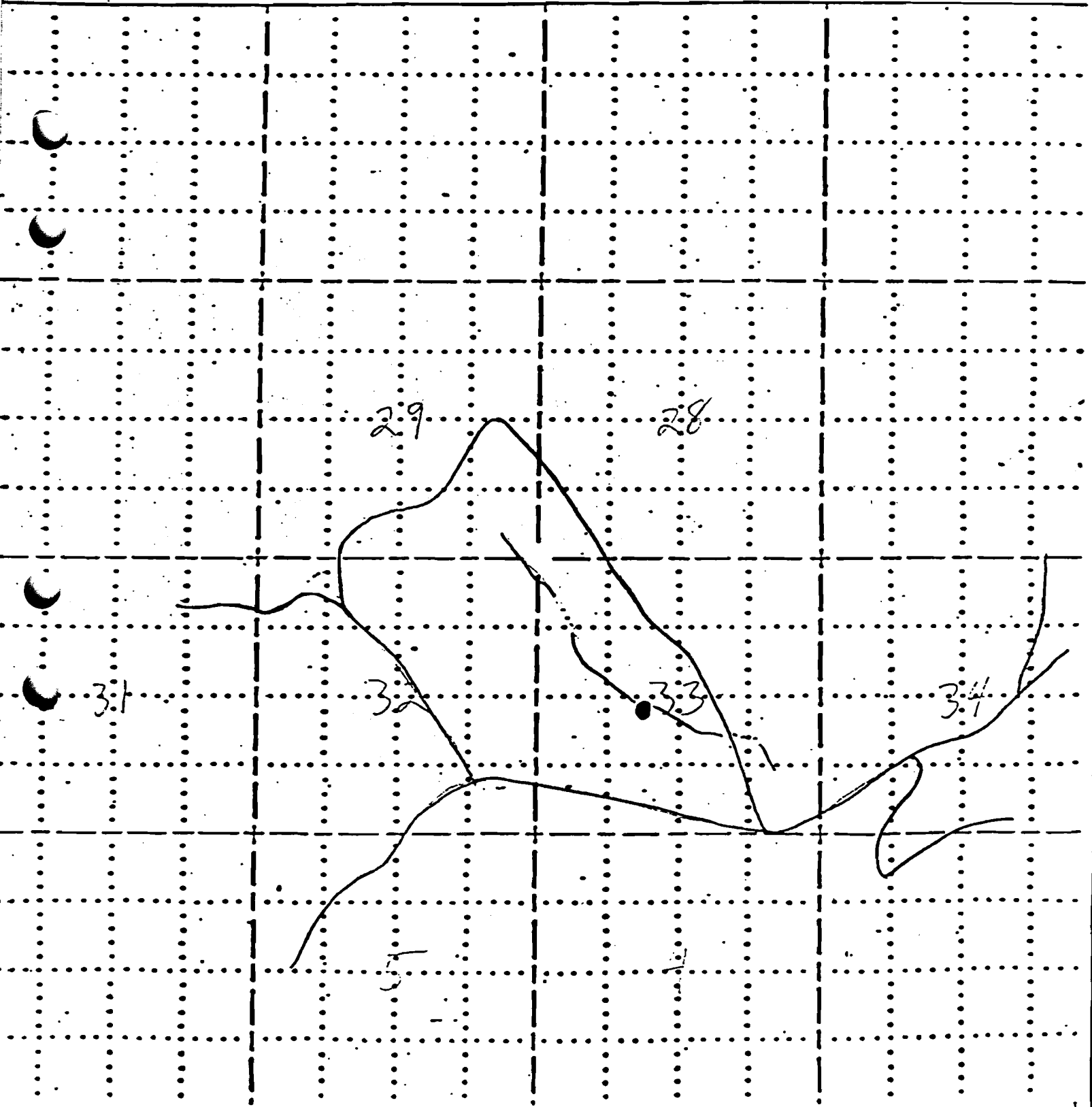
FIELD MAP SHEET WATER RESOURCES DEPT SALEM, OREGON

T. 40 S / 41 S R. 16 E Sec. _____ Subdiv. _____ N.F.

Mapped by _____ Reviewed by _____ Scale 2 inches = 1 Mile

- RESERVOIR
- DRAINAGE
- ROAD

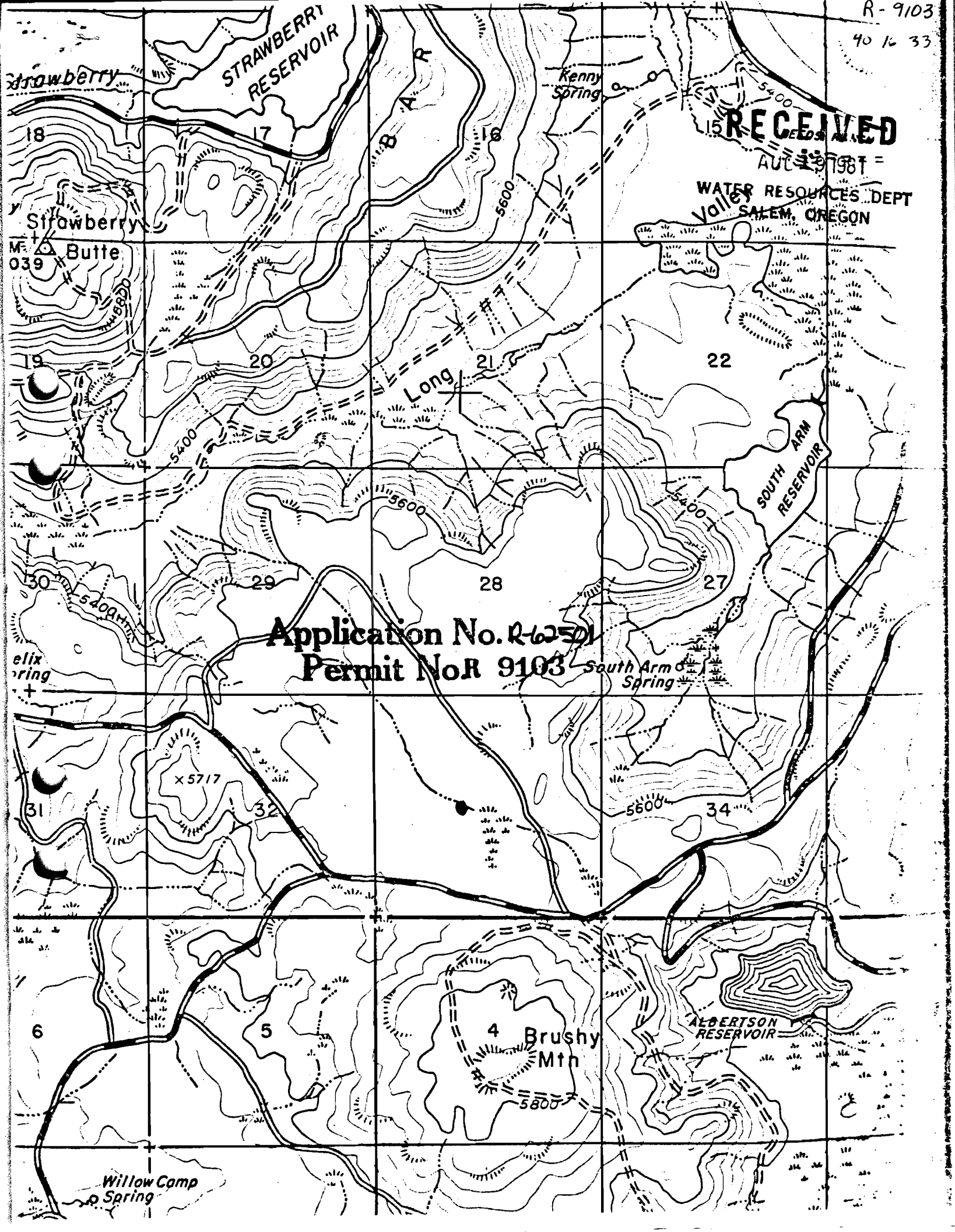
Application No. R-62501, 19
Permit No. R 9103



RECEIVED

AUG 13 1981

WATER RESOURCES DEPT
SALEM, OREGON



Application No. R-62501
Permit No. R 9103

STRAWBERRY
RESERVOIR

SOUTH ARM
RESERVOIR

Brushy
Mtn

ALBERTSON
RESERVOIR

Strawberry
Butte

Long

Kenny
Spring

elix
Spring

South Arm
Spring

Willow Camp
Spring