

RECEIVED

59215

AUG 19 1981

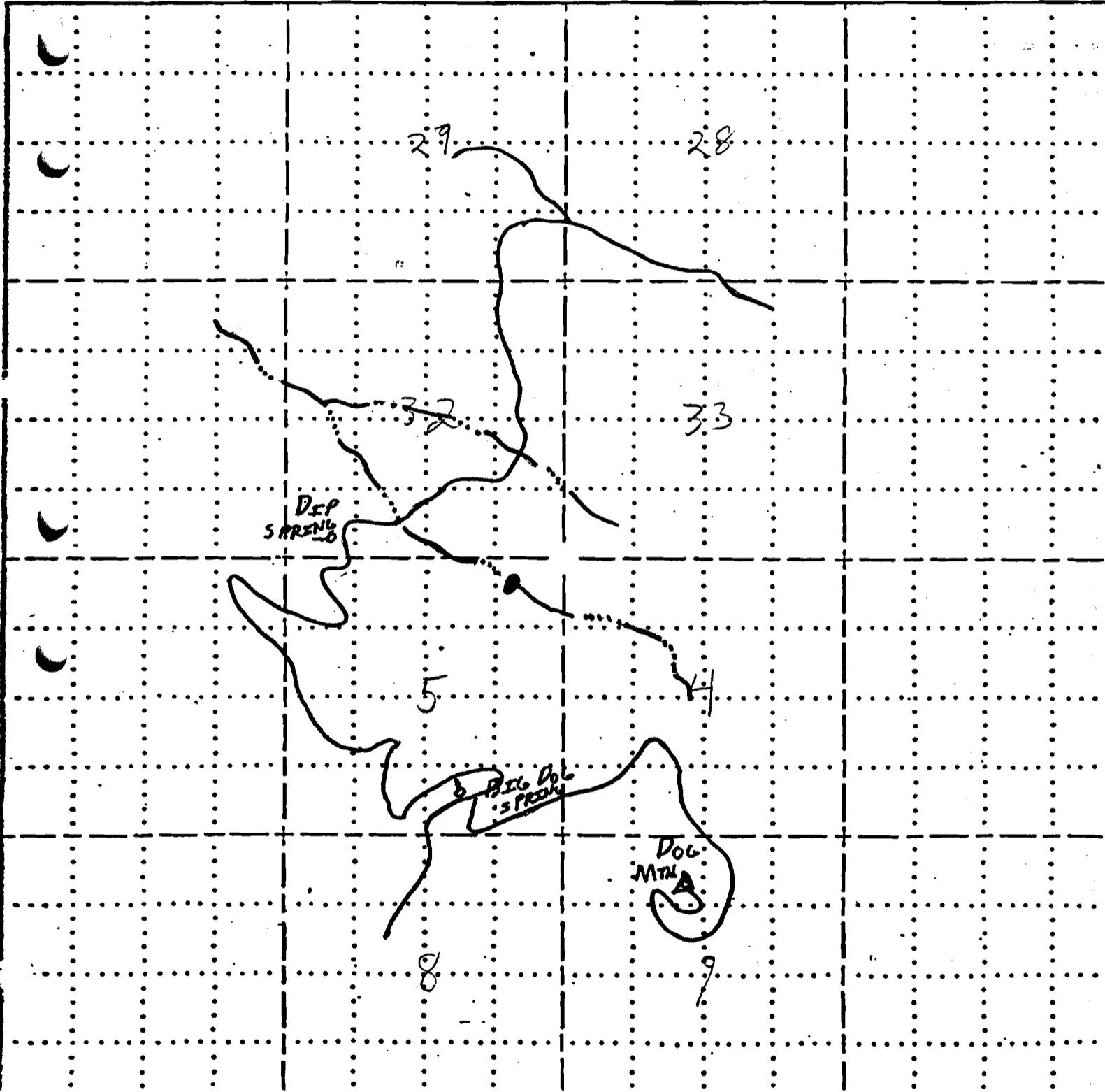
FIELD MAP SHEET WATER RESOURCES DEPT
SALEM, OREGON

T. 40S R. 17E Sec. Subdiv. N.F.

Mapped by Reviewed by Scale 2 inches = 1 Mile

- ROAD
- DRAINAGE
- RESERVOIR

Application No. R-62530, 19
Permit No. R 9128



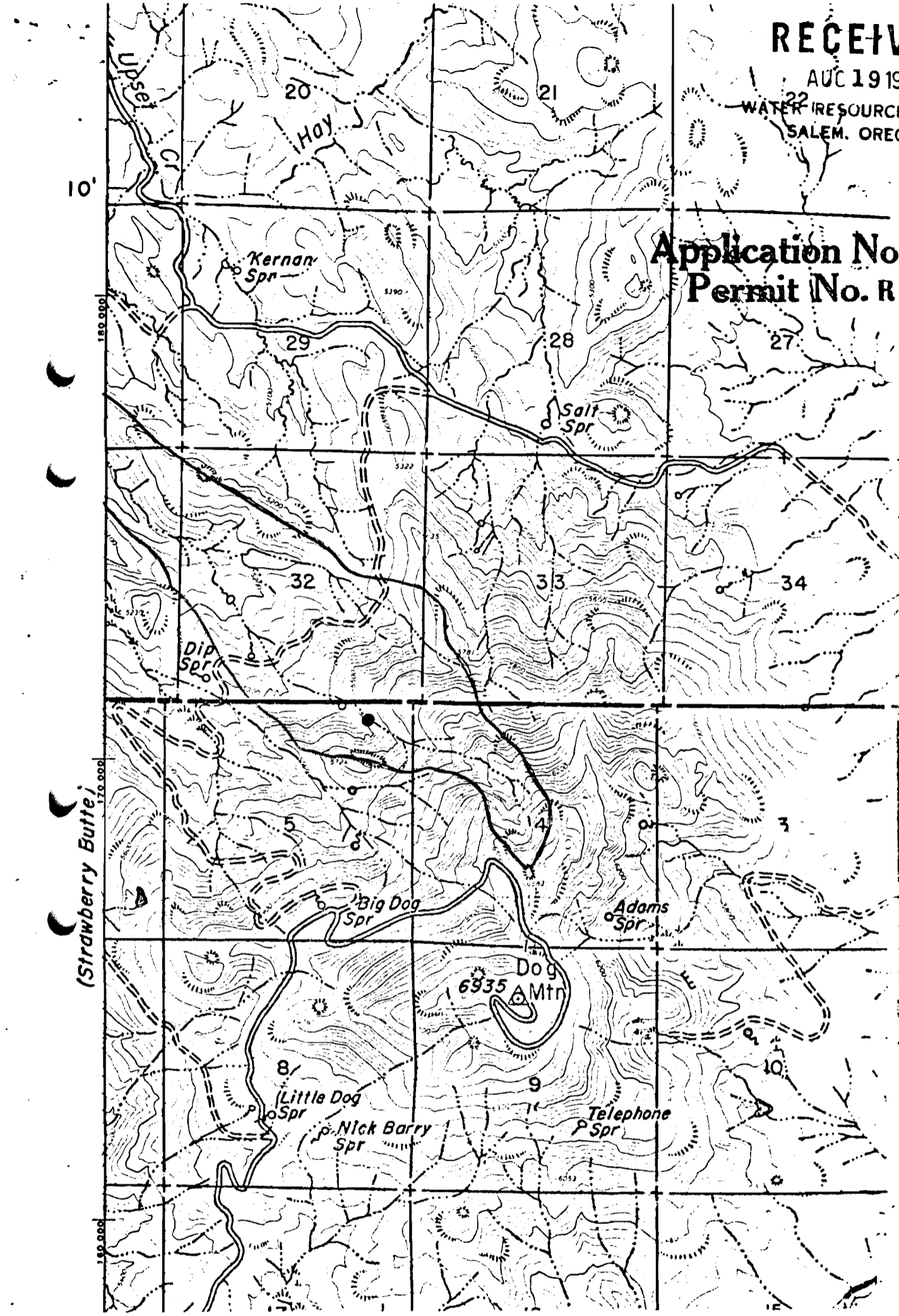
RECEIVED

AUG 19 1981

WATER RESOURCES DEPT
SALEM, OREGON

Application No. R-62530
Permit No. R 9128

40 17 5



10'

180,000

170,000

160,000

(Strawberry Butte)