

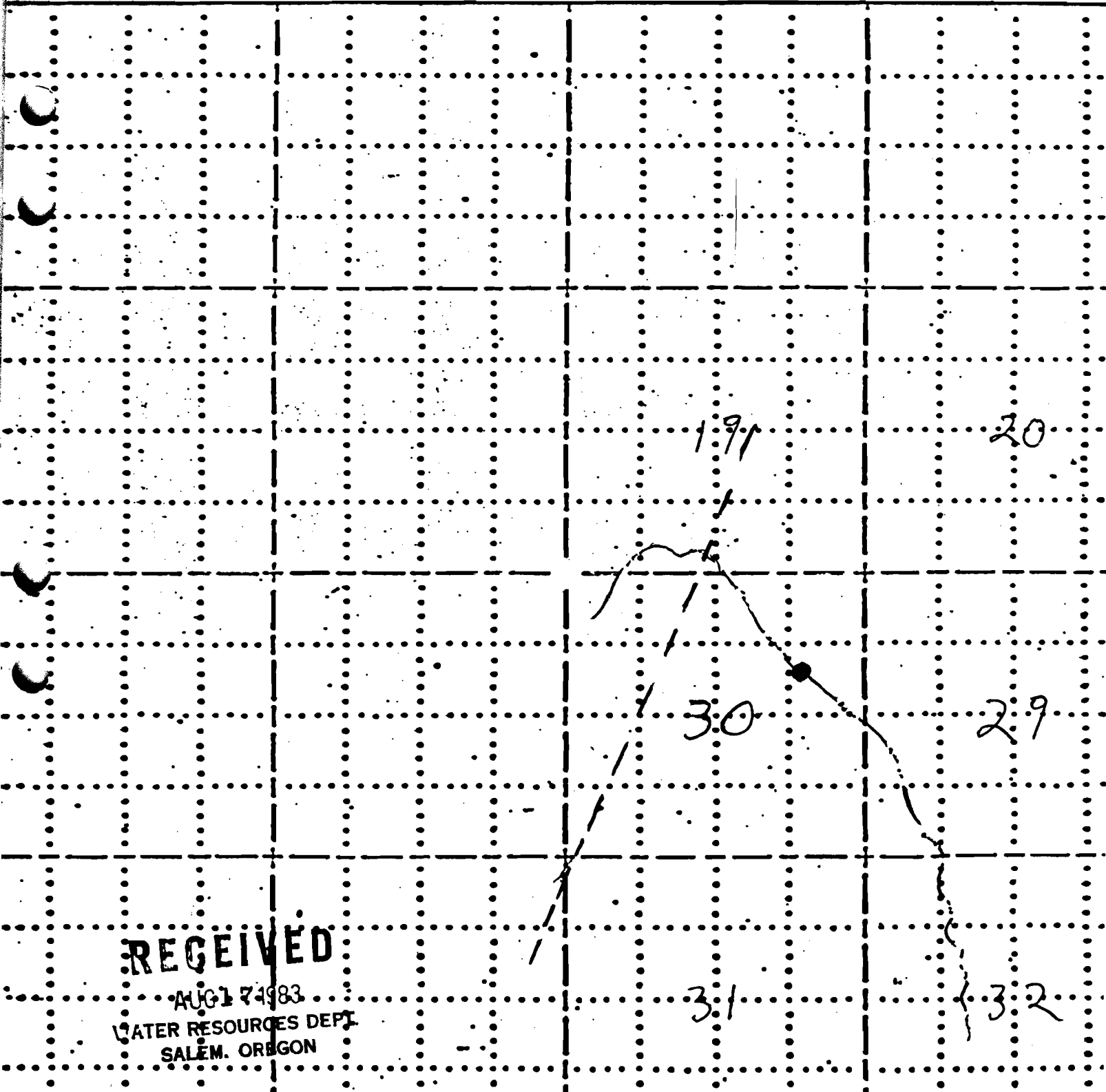
# FIELD MAP SHEET

AUG 19 1981  
WATER RESOURCES DEPT  
SALEM, OREGON

T. 38S R. 12E Sec. \_\_\_\_\_ Subdiv. \_\_\_\_\_ FREMONT N.F.

Mapped by \_\_\_\_\_ Reviewed by \_\_\_\_\_ Scale 2 inches = 1 Mile

● RESERVOIR Application No. R-62497 7/21, 19 81  
— DRAINAGE Permit No. R 9921  
- - - POWER LINES



**RECEIVED**

AUG 17 1983  
WATER RESOURCES DEPT  
SALEM, OREGON

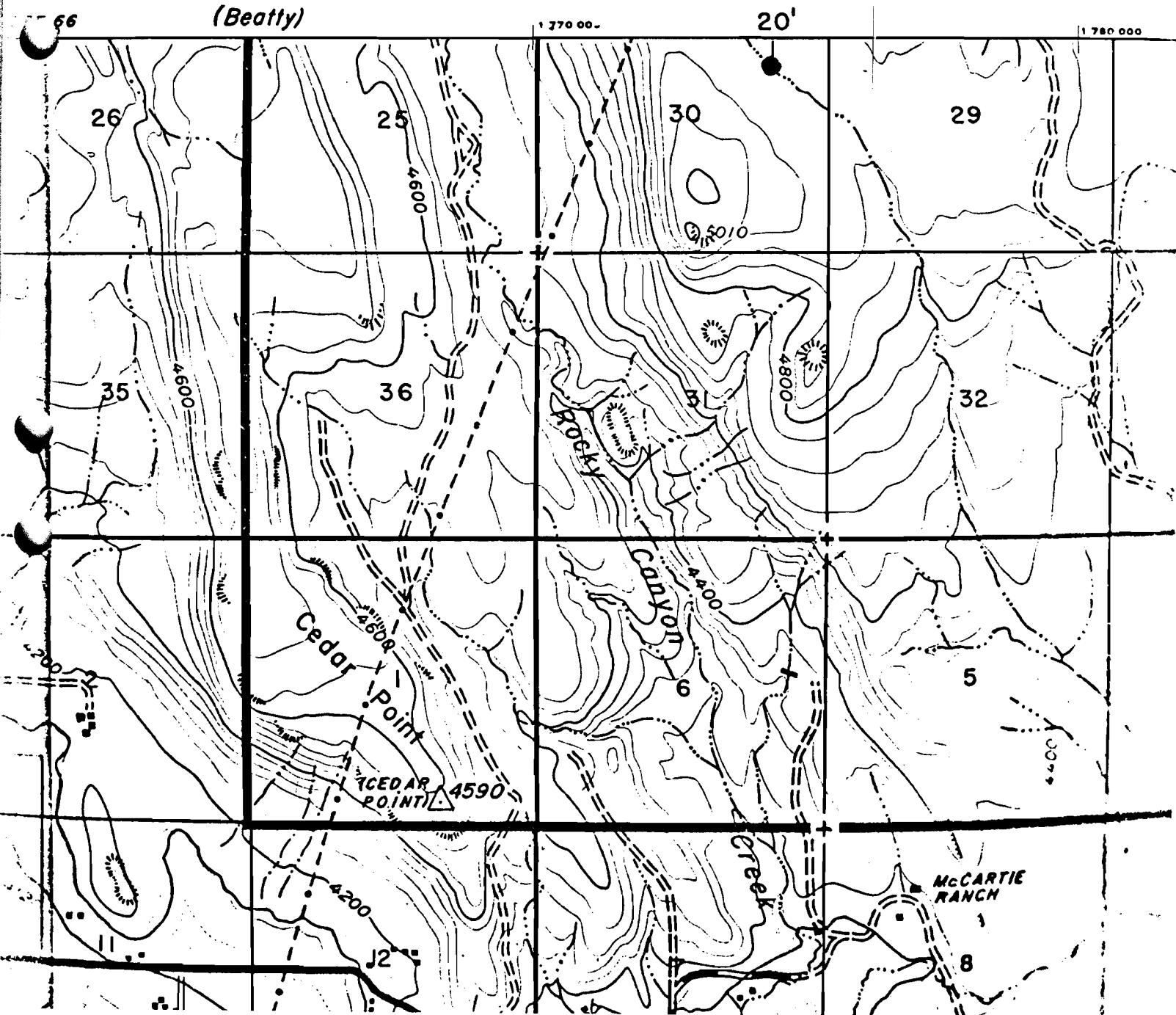
Application No. R-62497  
Permit No. R 9921

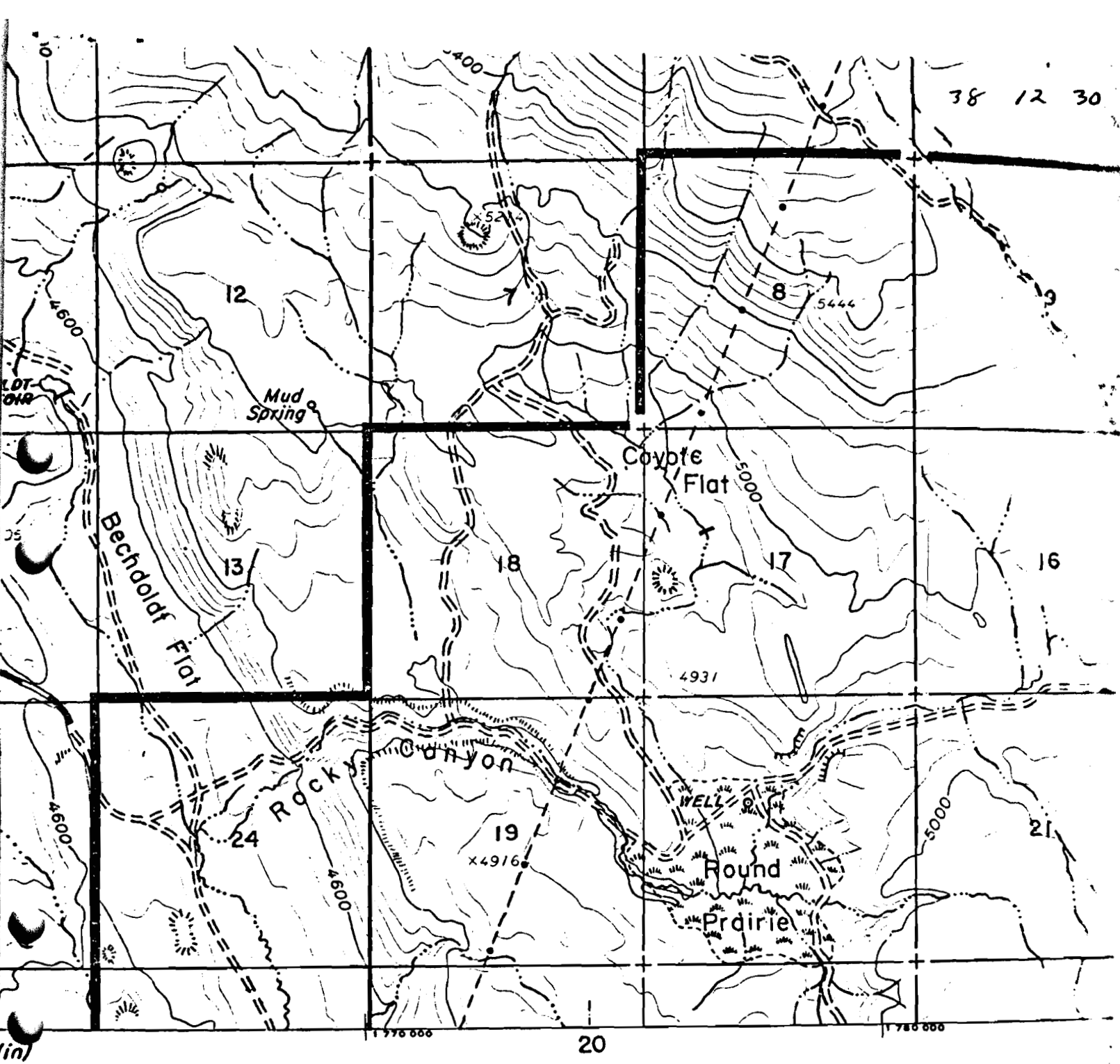
**RECEIVED**  
AUG 19 1981  
WATER RESOURCES DEPT  
SALEM, OREGON

(440)

**RECEIVED**  
AUG 17 1983  
WATER RESOURCES DEPT.  
SALEM, OREGON

38 12 30





1:31680

data assembled by:  
March 1976

**Application No. R-62497**  
**Permit No.**

**RECEIVED**  
AUG 17 1983  
WATER RESOURCES DEPT.  
SALEM, OREGON

**RECEIVED**  
AUG 19 1981  
WATER RESOURCES DEPT  
SALEM, OREGON

HEAVY I  
Paved R  
Rock Su  
U.S. Rc