

SECTION

21 NENE

TOWNSHIP 19S, RANGE 32E, W. M.

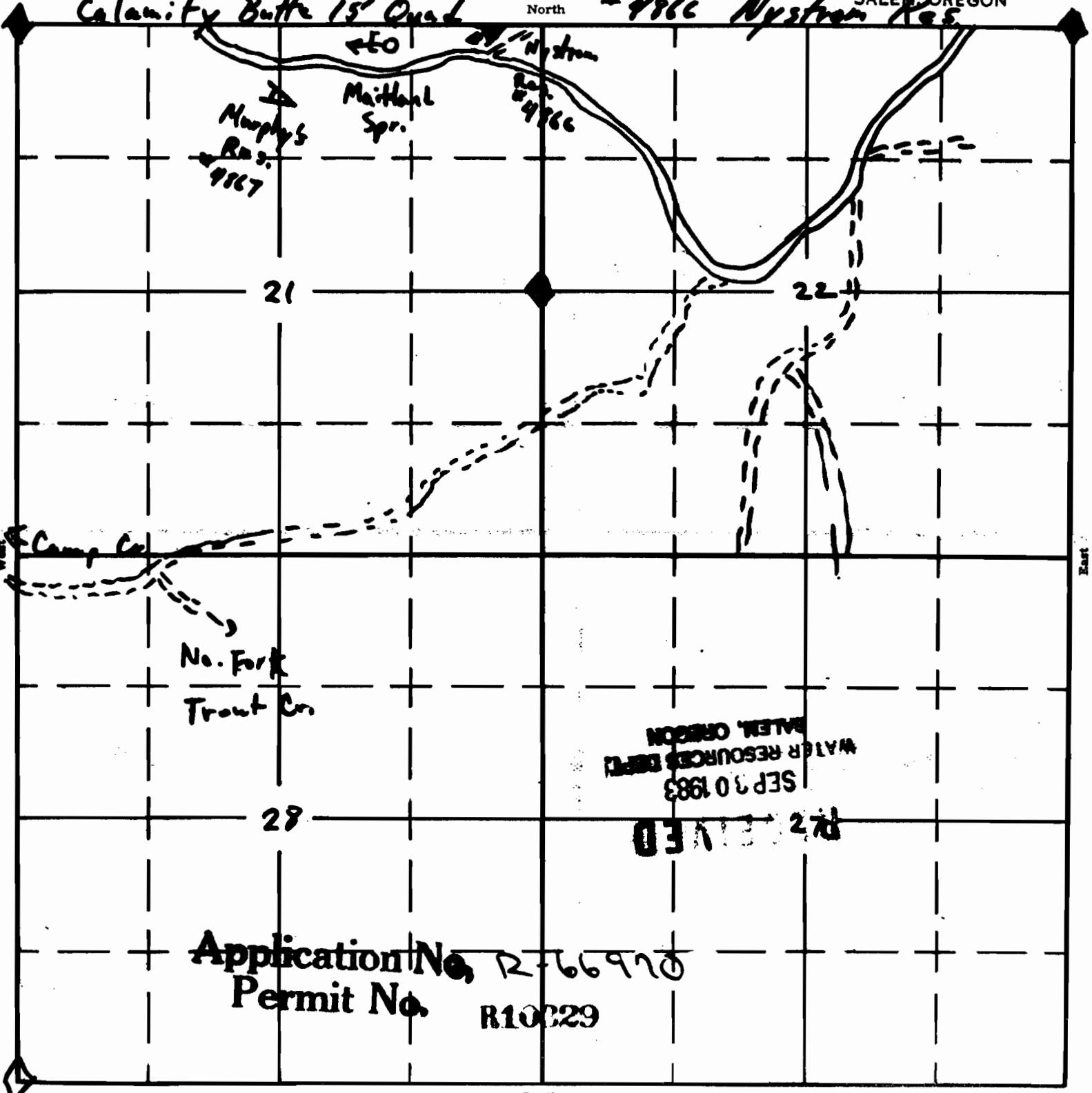
RECEIVED JUN 24 1985

WATER RESOURCES DEPT. SALEM OREGON

Calamity Butte 15' Quad

North

#4866 Nystrom Res.



Murphy's Res. #4867

Maitland Spr.

#4866

21

22

Camp Co.

No. Fork Trout Cr.

29

RECEIVED SEP 30 1983 WATER RESOURCES DEPT. SALEM OREGON

RECEIVED 28

Application No. R-66970

Permit No. R10229

South

East