

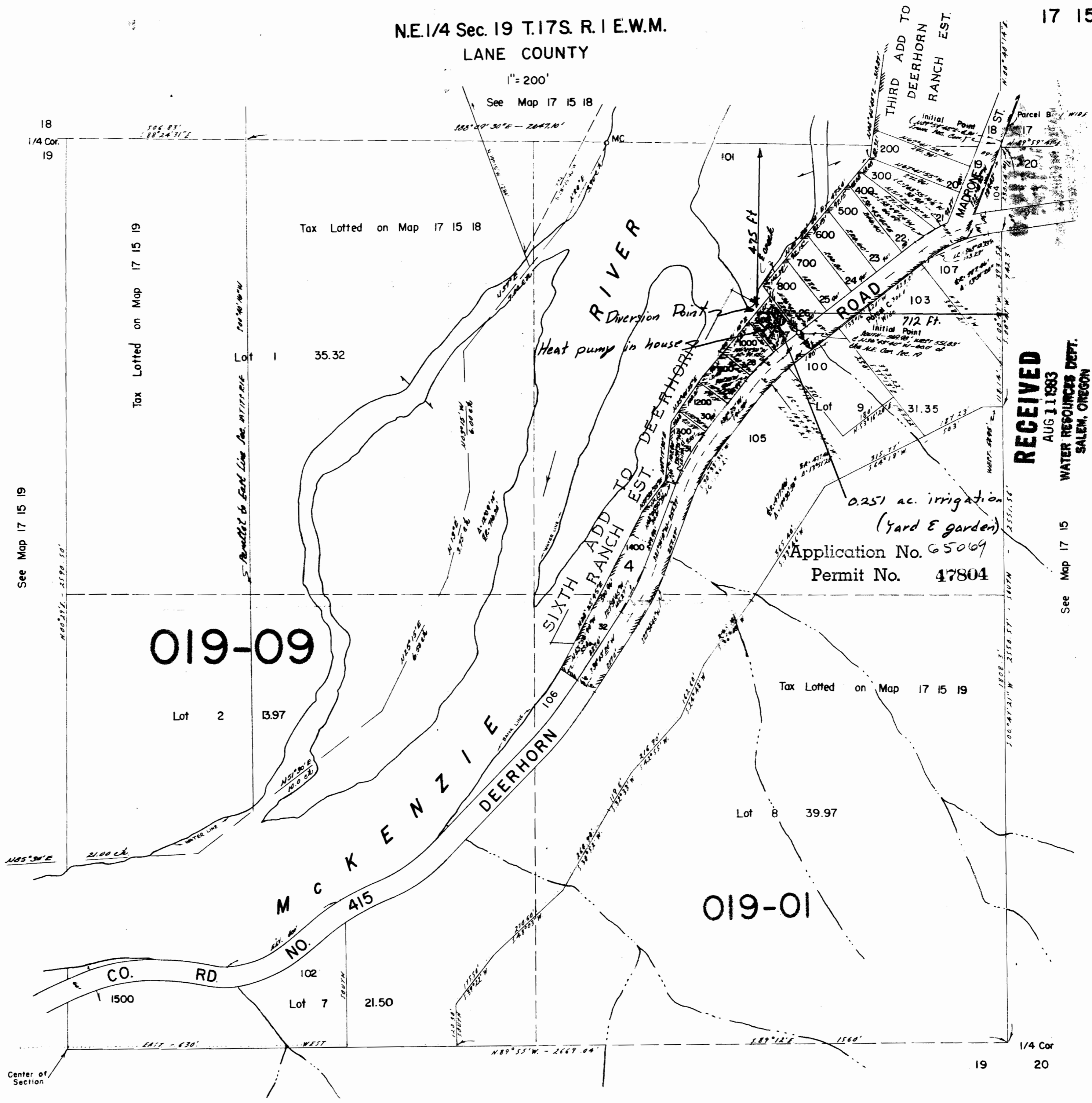
N.E. 1/4 Sec. 19 T. 17S. R. 1 E. W.M.

LANE COUNTY

1" = 200'

See Map 17 15 18

17 15 19



019-09

019-01

0.251 ac. irrigation
 (Yard & garden)
 Application No. 65069
 Permit No. 47804

RECEIVED
 AUG 11 1983
 WATER RESOURCES DEPT.
 SALEM, OREGON

18
 1/4 Cor.
 19
 See Map 17 15 19
 Tax Lotted on Map 17 15 19
 Tax Lotted on Map 17 15 18
 Center of Section

See Map 17 15 19

See Map 17 15