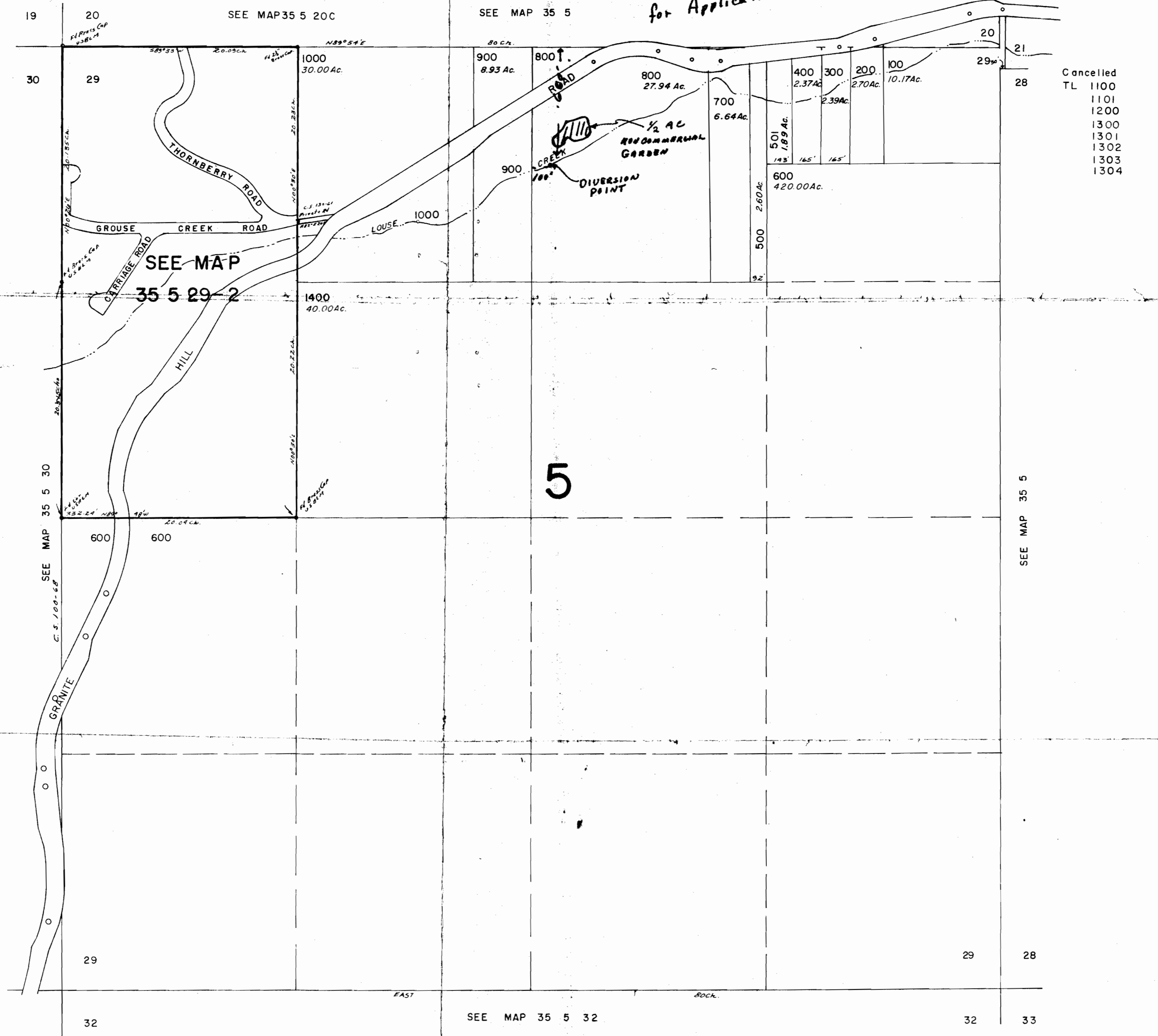


SECTION 29 T35S R5W.W.M.
JOSEPHINE COUNTY

1" = 400'

FRANK J. and Helen L. Knab
3990 Granite Hill Rd
Grants Pass, OR 97526 PL 479-1985
Amended Map
for Application 68133 J.K.



Cancelled
 TL 1100
 1101
 1200
 1300
 1301
 1302
 1303
 1304

SEE MAP
 35 5 29-2

5

SEE MAP 35 5

SEE MAP 35 5 32

RECEIVED
 NOV 23 1984
 WATER RESOURCES DEPT.
 SALEM, OREGON

68133
 48993