

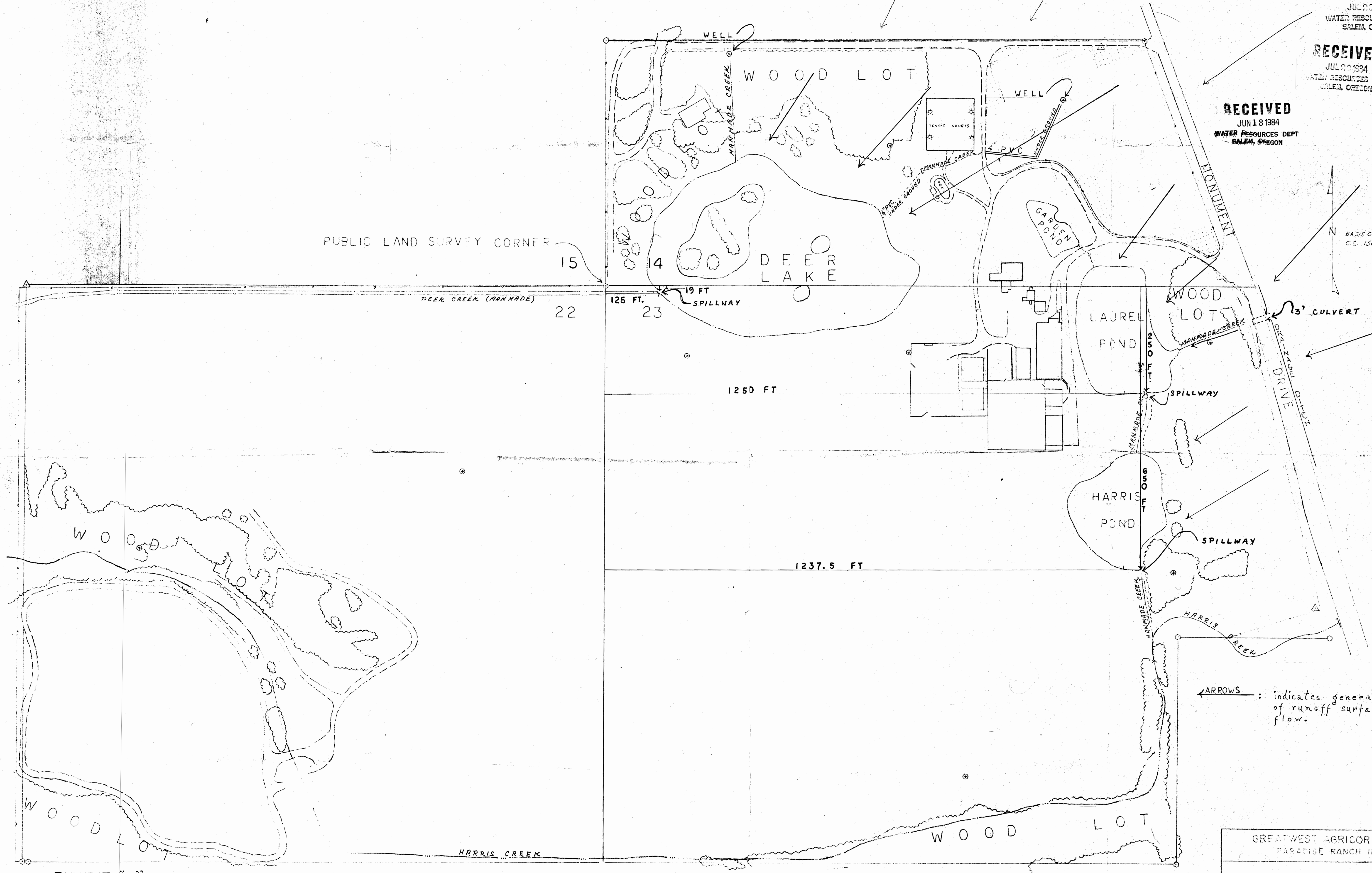
Application No. R-68126 & 68127
 Permit No. R 9900 48575

RECEIVED
 JUL 20 1984
 WATER RESOURCES DEPT.
 SALEM, OREGON.

RECEIVED
 JUL 20 1984
 WATER RESOURCES DEPT.
 SALEM, OREGON.

RECEIVED
 JUN 13 1984
 WATER RESOURCES DEPT.
 SALEM, OREGON.

N
 BASIS OF BEARINGS
 G.S. 151-74



ARROWS : indicates general direction of runoff surface water flow.

EXHIBIT "A"

- △ MAPPING CONTROL
- PROPERTY CORNER
- TRAVEL POINT
- ⊙ WELL

GREATWEST AGRICORP, INC.
 PARADISE RANCH INN

SCALE: 1" = 100'

TOWNSHIP 35S RANGE 6W OF THE
 WILLAMETTE MERIDIAN, JOSEPHINE COUNTY, O.R.