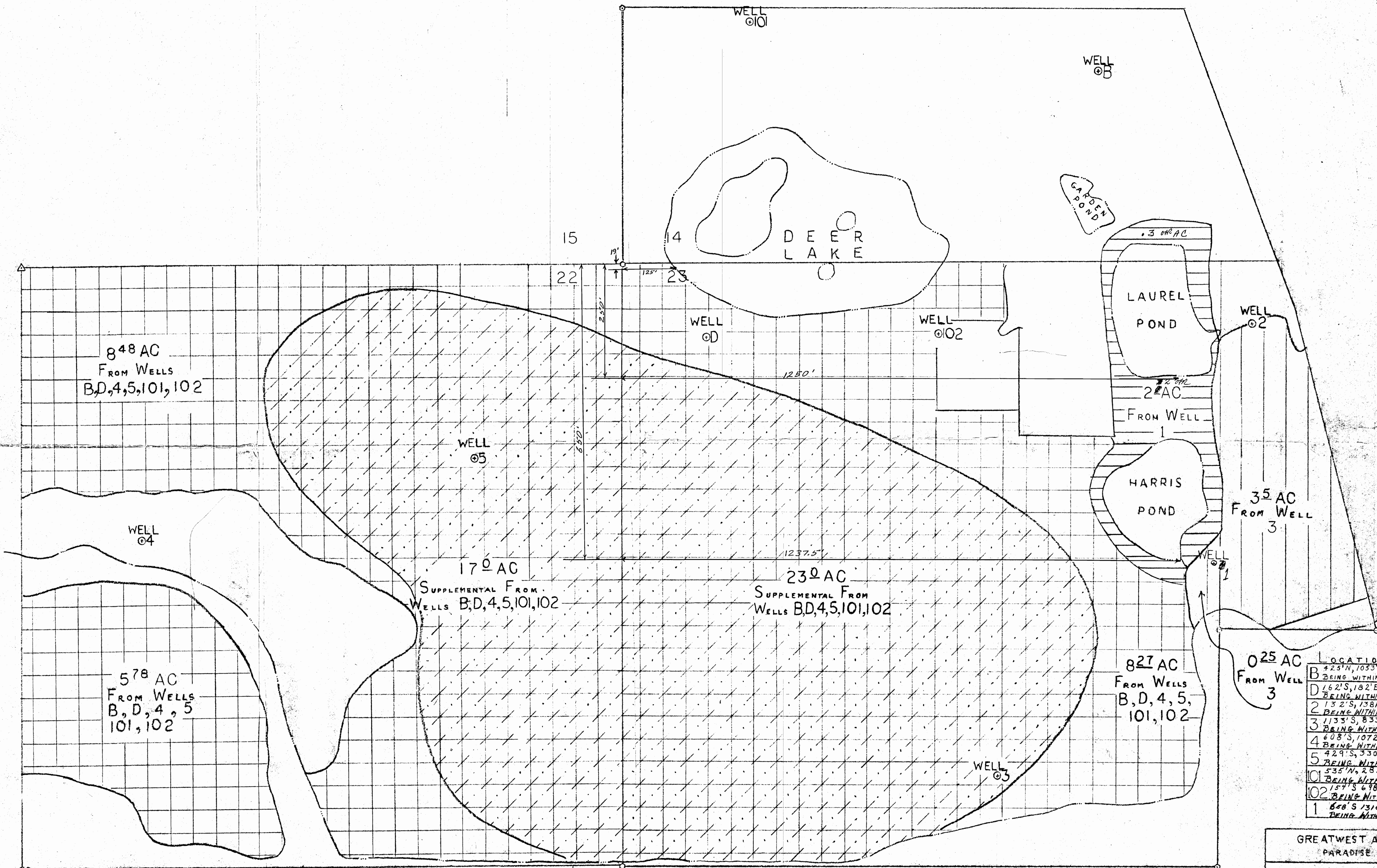


RECEIVED
 JUL 20 1994
 WATER RESOURCES DEPT.
 SALEM, OREGON



LOCATION OF WELLS

B	423' N, 1053' E FROM SW COR. S-14 BEING WITHIN SW 1/4 SW 1/4 SEC 14
D	162' S, 182' E FROM NW COR S-23 BEING WITHIN NW 1/4 NW 1/4 SEC 23
2	132' S, 1381' E FROM NW COR S-23 BEING WITHIN NW 1/4 NW 1/4 SEC 23
3	1133' S, 833' E FROM NW COR S-23 BEING WITHIN NW 1/4 NW 1/4 SEC 23
4	608' S, 1072' W FROM NE COR S-22 BEING WITHIN NE 1/4 NE 1/4 SEC 22
5	429' S, 330' W FROM NE COR S-22 BEING WITHIN NE 1/4 NE 1/4 SEC 22
101	535' N, 283' E FROM SW COR S-14 BEING WITHIN SW 1/4 SW 1/4 SEC 14
102	154' S, 698' E FROM NW COR S-23 BEING WITHIN NW 1/4 NW 1/4 SEC 23
1	608' S, 1310' E FROM NW COR S-23 BEING WITHIN NW 1/4 NW 1/4 SEC 23

P O N D S
 DEER LAKE FROM WELL "B"
 GARDEN, LAUREL, AND HARRIS PONDS FROM WELL "2"

- PRIMARY FROM WELLS #B,D,4,5,101,102
- SUPPLEMENTAL FROM WELLS #B,D,4,5,101,102
- PRIMARY FROM WELL #3 #1

Application No. G-11059, R-68126, & 68127
 Permit No. G10403 R 9900 48575

GREATWEST AGRICORP, INC
 PARADISE RANCH, INR
 SCALE 1" = 100'
 TWP 35S JOSEPHINE COUNTY
 OREGON

EXHIBIT 99