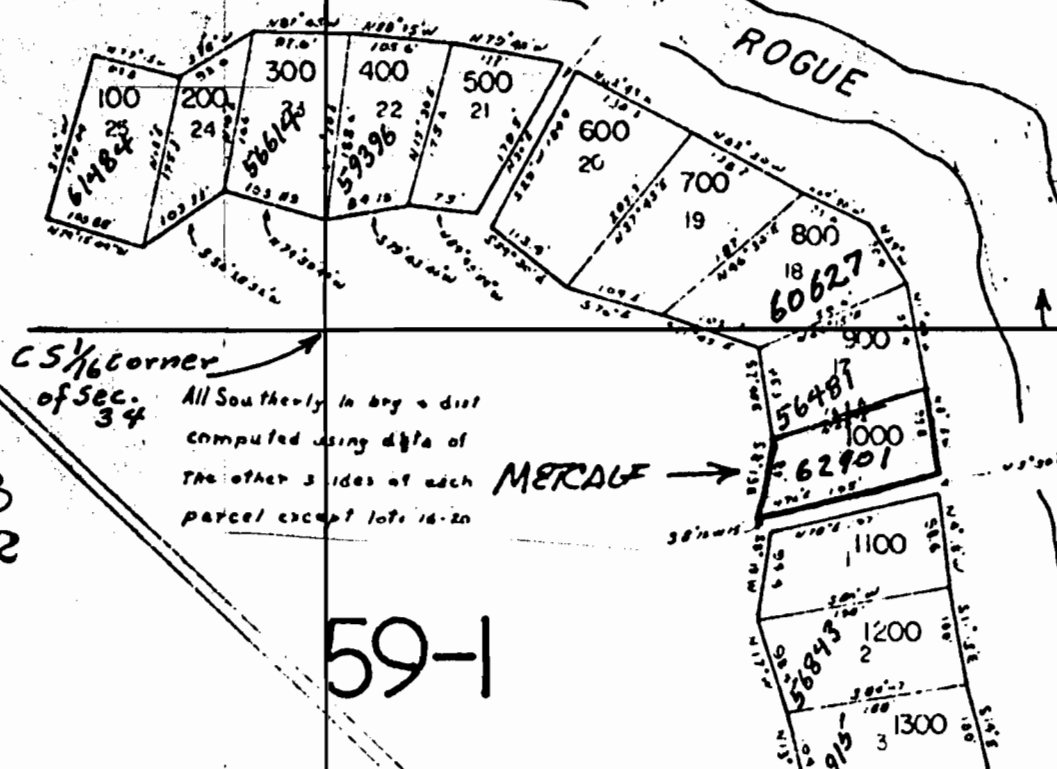


NE 1/4 SW 1/4

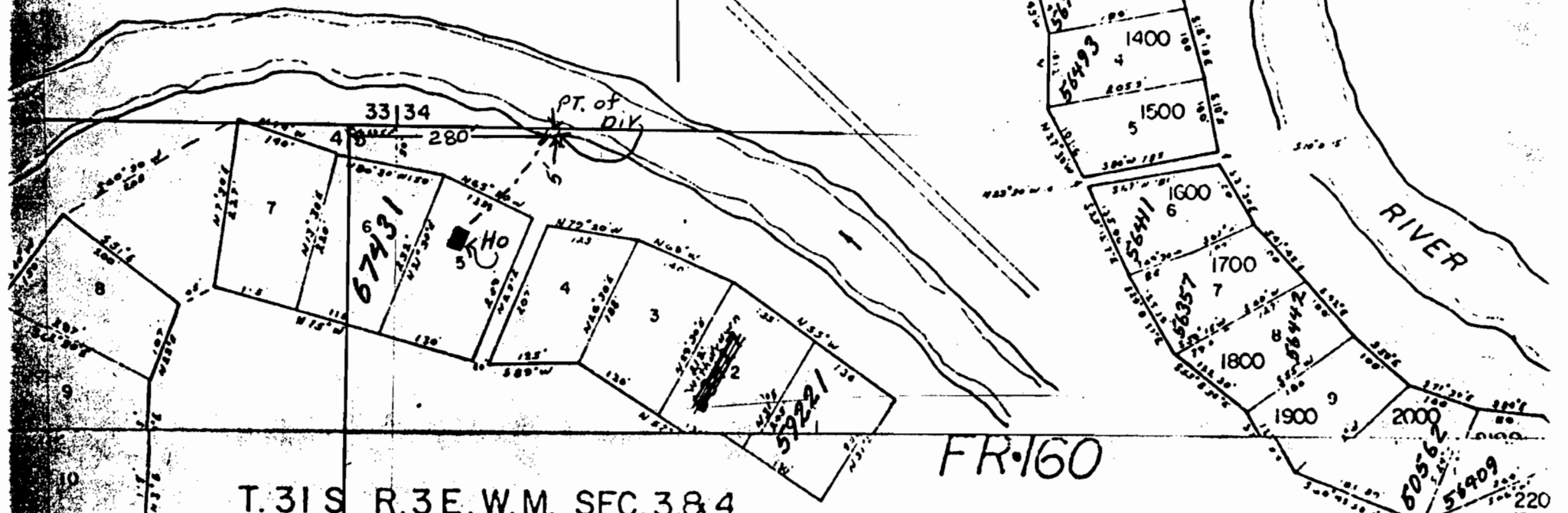
T.30 S. R.3 E. W.M.  
ROGUE RIVER S  
HOME SIT  
BLOCK 'A'



Application No. 68153  
Permit No. 48762

59-1

SW 1/4 SE 1/4



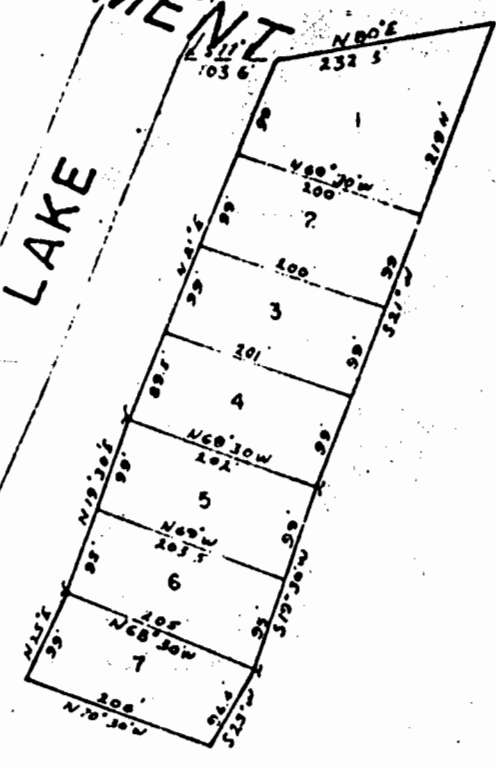
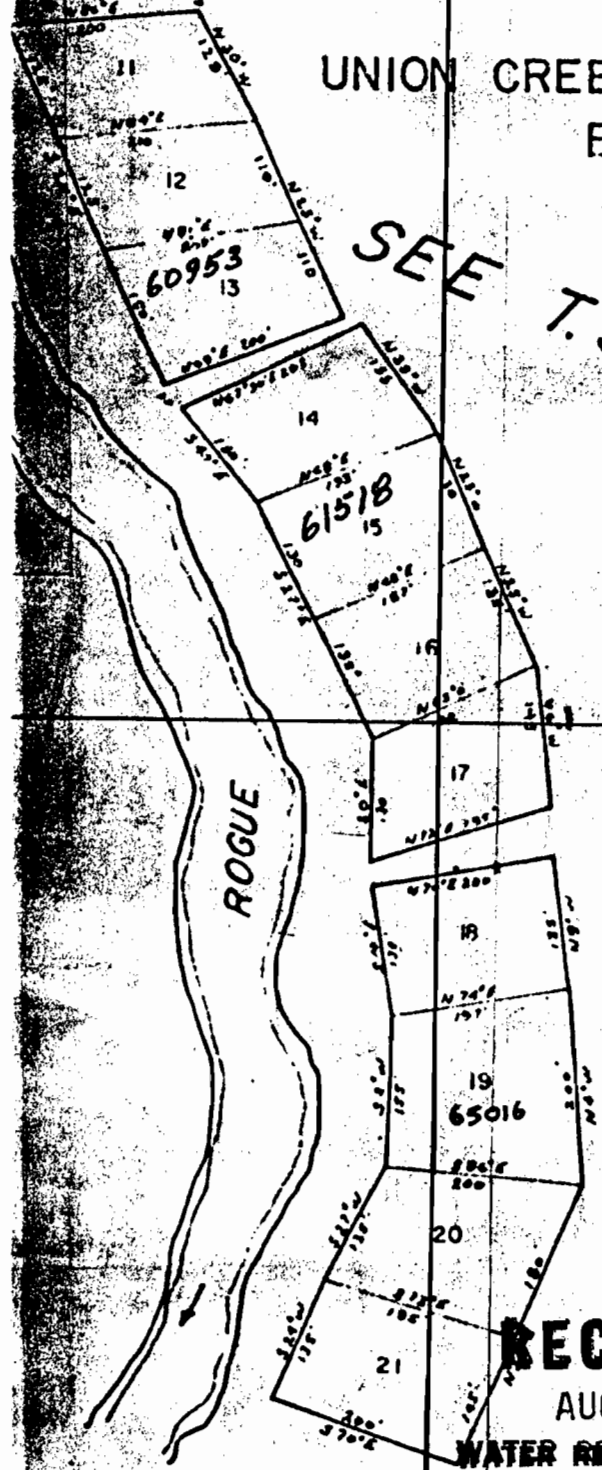
T.31 S R.3 E. W.M. SEC. 3 & 4

UNION CREEK SUMMER HOME SITE  
BLOCK 'B'

SEE T.31 S. R.3 E ENLARGEMENT  
HY.

T.31 S R.3 E. W.M. S

UNION CREEK  
SUMMER HOME  
BLOCK 'E'



**RECEIVED**  
AUG 10 1984  
WATER RESOURCES DEPT  
SALEM, OREGON