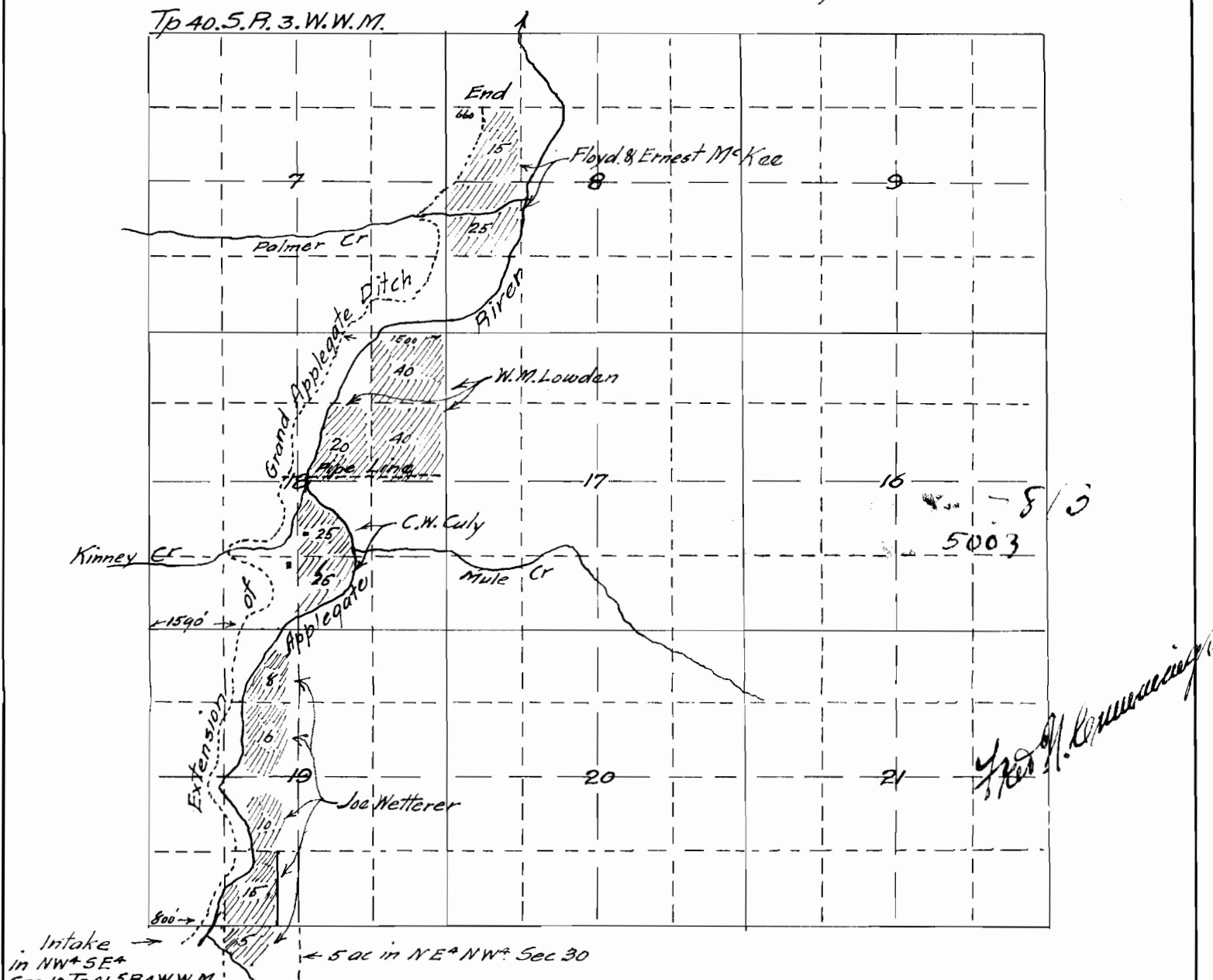


— MAP —

Accompanying application of FLOYD and ERNEST MCKEE, W.M. LOWDEN, C.W. CULY, and JOE WETTERER. of Jacksonville Jackson County, Oregon. for Permit to the waters of Carberry Fork and Big Applegate River, tributary to Rogue River, Jackson Co. Oregon. for the purpose of Irrigation.

— February 1921. —



Map made from notes and measurements taken in the field by Mr Ernest McKee, correctly showing the lands to be irrigated, together with Streams and Ditches in the immediate vicinity. compiled by.

— Fred. N. Cummings. C.E. —