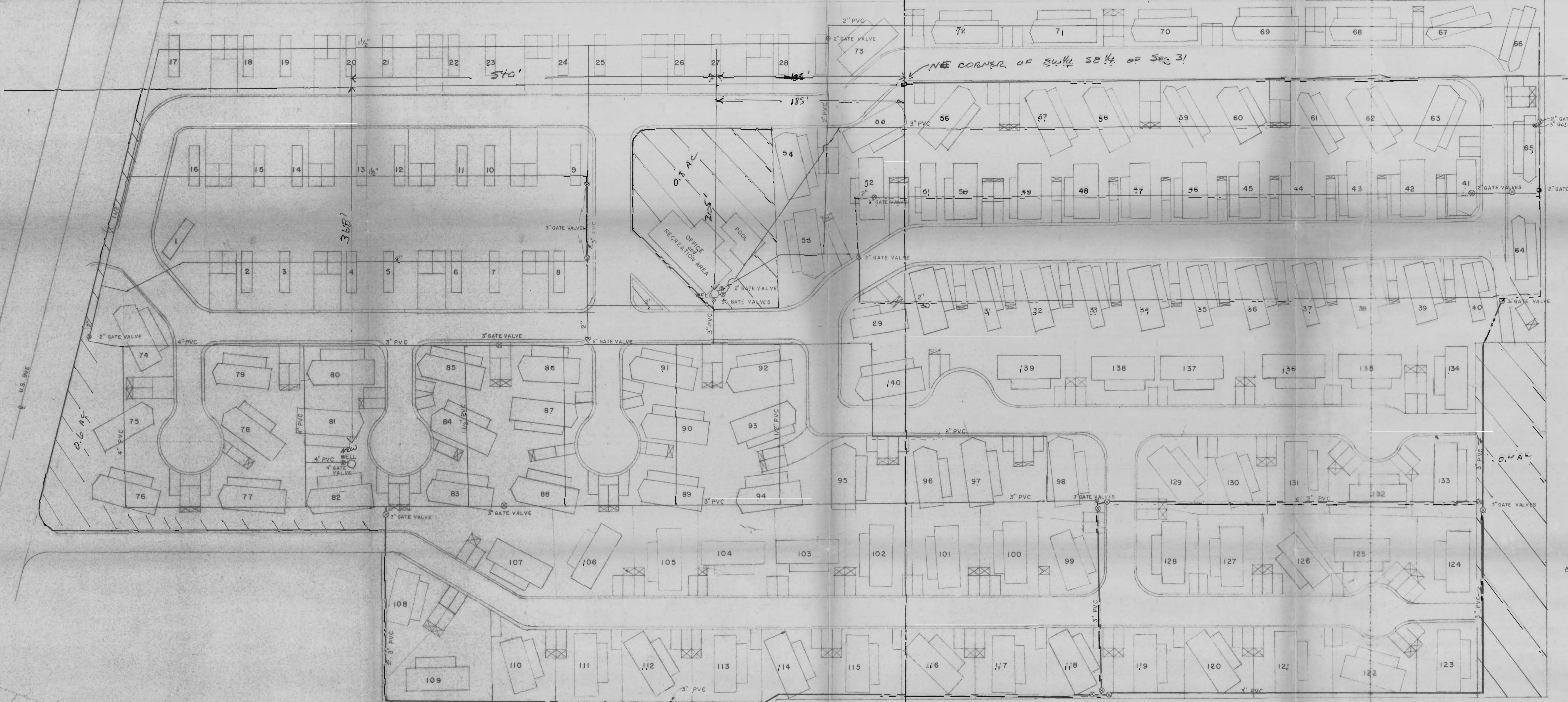


NW 1/4 SE 1/4

NE 1/4 SE 1/4



Tip. 65, R. 24, W. 11

NOTE: ALL WATER LINES TO BE A MINIMUM OF 10' HORIZONTAL DISTANCE FROM SANITARY SEWER LINES.

— EXISTING WATER LINES
 — PROPOSED WATER LINES

* SCALED DISTANCES ARE APPROXIMATE AS MAP IS A COMPOSITE DRAWING.

RECEIVED

APR 8 1980

WATER RESOURCES DEPT.
SALEM, OREGON

Application No. 6955
Permit No. 6800

ARROWHEAD MOBILE PARK



WATER SYSTEM		SHEET
Scale: 1"=40'	Date: 3-20-79	
Design: MGB	BOATWRIGHT ENGINEERING INC.	
Drawn: MGM	2613 12th STREET S.E.	
Checked: [Signature]	SALEM OREGON	